



CK10/20 Series

35 - 40 HP



CK10/20 SERIES

Powerfully Built. Great Comfort.

Kioti CK10/20 Series will be a perfect partner for you. Compact and easy to use, but robust and innovative features will amaze you. You deserve to enjoy your ride with KIOTI.

**Manual or HST
ROPS or CAB
Premium Features**

**Eco-Friendly Diesel Engine
Dual Rear Remote Valves
Single Lever Joystick**





* All product images are for illustrative purpose only and may differ from the actual product.





Rear Wipers (Opt.) & Defrost (Std. only for 40hp Cab model)

The front and rear window wipers and defrost wire ensure the clear visibility by keeping the window clean from rain, dust or condensation. Wipers are positioned to minimize the impact on operator's view.



Independent PTO Switch (20 series) and Auto PTO

Rear Independent PTO is easily engaged by the simple turn of a knob. A safety interlock prevents the engine from starting if the PTO switch is left on. All models come standard with a selectable manual or automatic PTO option. When the Auto PTO is engaged, the PTO will automatically shut off when the 3-point control is raised, eliminating exposure to the running implements.

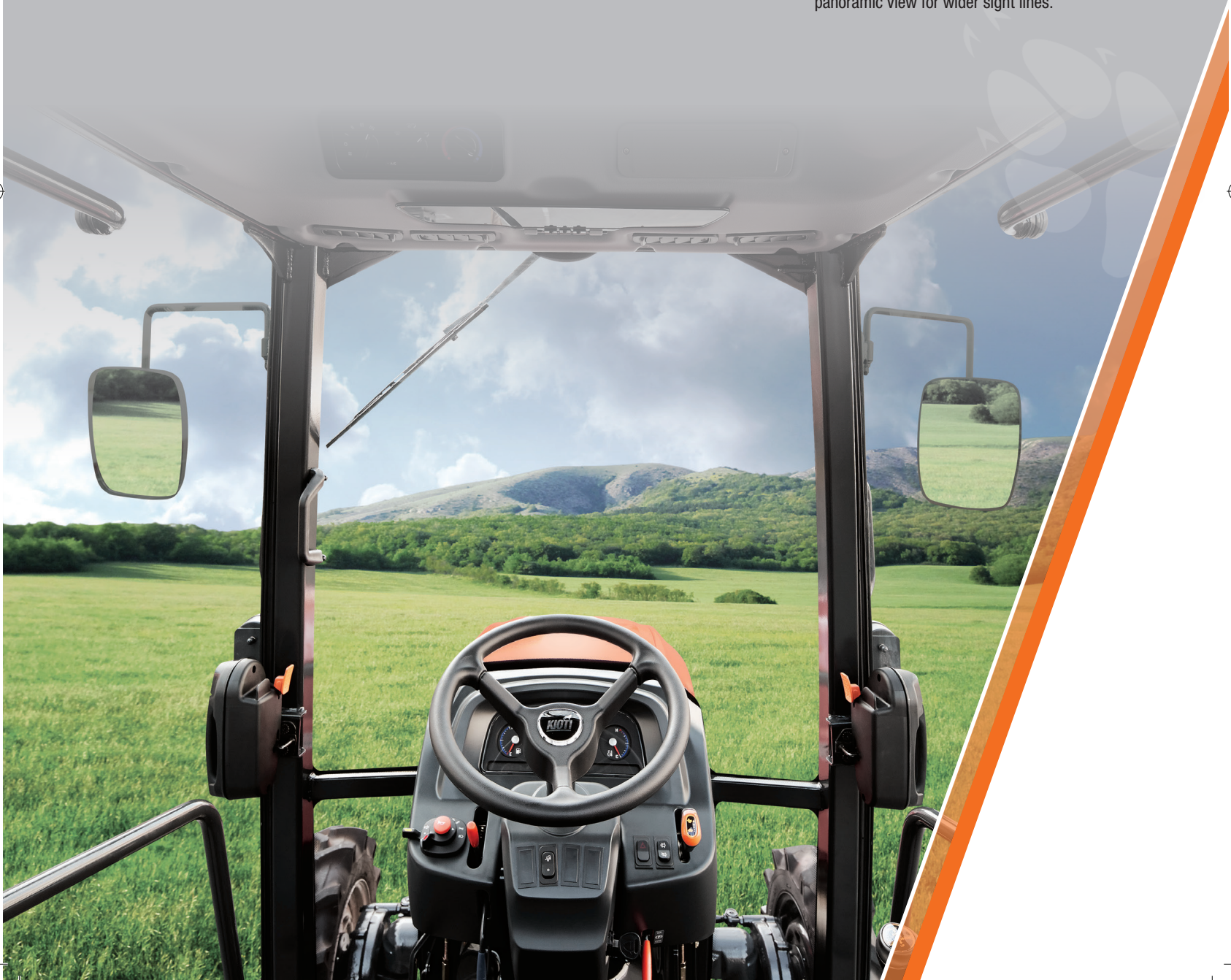


Single Lever Joystick (Std. 40hp)

The single lever joystick feature makes for easier and more efficient front loader operation. The lever returns to neutral when released. A float position allows the bucket free flotation over the ground surface.

Panoramic Cab View

The large unobstructed windows provide a panoramic view for wider sight lines.



CK10/20 Series WORK STRONG DRIVE EASY

Durable, high performance CK series will make your day for all seasons!



Dual Air Cleaner (Opt.)

Extending filter life, the dual air cleaner offers increased filtration when working in dry, dusty environments.



Illuminated Dashboard

The illuminated dashboard ensures great visibility while working in bright daylight or at night.



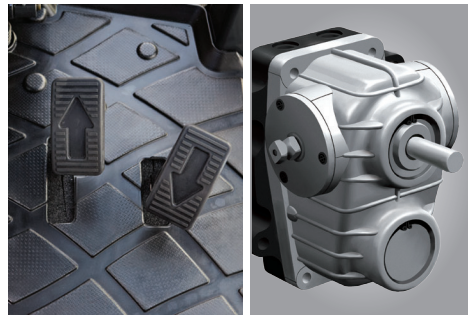
Power Steering with Tilt

The standard power steering reduces the effort required to make tight, repetitive turns. The tilt function helps to adjust the steering wheel according to operator needs.



Deluxe Suspension Seat with Armrest

An adjustable suspension seat gives the operator a comfortable ride even after long operation hours in any task. A retractable seatbelt is a standard feature on all KIOTI tractors for operators' safety.



Manual and HST Models

The CK10/20 Series delivers power and efficiency with all models featuring performance proven transmissions. Manual transmission has 12 Forward and 12 Reverse speeds with synchronized shuttle delivering heavy duty performance. Excellent HST transmission provides the powerful and efficient drive with three range controls (Hi/Mid/Low) and easy operational twin pedals.



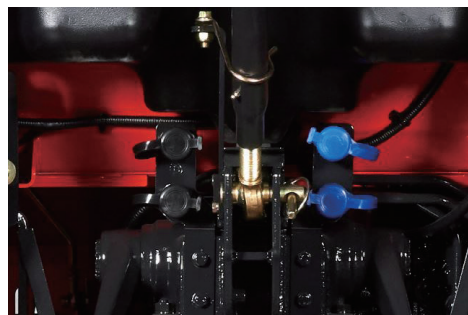
HST Linked Easy Speed

When the HST linked pedal is engaged, the HST pedal and the engine rpm are synchronized. As the forward or reverse pedal is depressed, engine RPM increases to provide more torque for increased load. This reduces fuel consumption and simplifies tractor operation for a variety of utility and loader applications. Only available on HST models.



HST Cruise Control (Std. 40hp HST)

HST cruise system enables the tractor to maintain a steady speed and RPM as set by the operator.



Rear Remote Valves (4 ports)

All Cab and 40HP ROPS models come standard with dual remote hydraulic valves to accommodate a wide variety of implements.



High Ground Clearance

The minimum ground clearance of 340mm provides a comfortable ride even on rocky or uneven terrain.

KIOTI TRACTOR CK20 MANUAL SERIES

SPECIFICATIONS

MODEL	CK3520	CK3520D	CK3520C	CK4020	CK4020D	CK4020C	
ENGINE							
Manufacturer	Daedong						
Model	3B183						
Engine Gross Power	HP	35.0		38.0			
Rated Revolution	rpm	2,600					
Type	3cylinder, water-cooler 4cycle Diesel.						
Total displacement	cc	1,826					
Fuel Tank	ℓ	34.0					
PTO	rpm	Independent Rear: 540/750, Mid: 2000(opt.)					
DRIVE TRAIN							
Transmission	Manual						
No. of Speeds	12×12						
Differential Lock	Rear Standard						
Traveling Speeds Forward	km/h	1.65 ~ 25.00					
Traveling Speeds Reverse	km/h	1.61 ~ 24.36					
HYDRAULIC							
3 Point Lift Control Type	Position	Position & Draft	Position	Position	Position & Draft	Position	
Implement Pump	lpm	26					
Power Steering Pump	lpm	16.9					
Total Hydraulic Flow	lpm	42.9					
3-Point Hitch Type	Category I						
Lower Link Type	Ball			Quick			
Max. Lifting Capacity@Lift Point	kg.f	1,030					
Lifting Capacity@610mm Point (Through the Full Range)	kg.f	740					
No. of External Hydraulic Ports	4 ports(opt.)			4 ports(std.)			
DIMENSIONS							
Overall Length (incl. 3-pt Hitch)	mm	3,070					
Overall Width (Minimum Tread)	mm	1,385					
Tread Width Front 4WD	mm	1,125					
Tread Width Rear	mm	1,102					
Overall Height (w/ AG Tire)	mm	2,500	2,111	2,315	2,500	2,111	2,315
Wheel Base	mm	1,670					
Ground(Crop) Clearance	mm	340					
Min. Turning Radius (With Brake)	mm	2,450					
Weight (with ROPS or CABIN)	kg.f	1,314	1,365	1,514	1,314	1,365	1,514
TIRE SIZE							
AG. Tire Front	7-16						
AG. Tire Rear	11.2-24						
Turf. Tire Front	27×8.5-15						
Turf. Tire Rear	41×14-20						
Industrial. Tire Front	25×8.5-14						
Industrial. Tire Rear	15-19.5						
Radial AG Tire Front	240/70R16						
Radial AG Tire Rear	360/70R24						

STANDARD EQUIPMENT

- Tilt Steering
- Rear PTO
- 4-Port Hyd. Remote Valve (only for 40HP and Cabin)
- Joystick Valve(only for 40hp)
- Rear View Mirror(2set)
- Parking Brake
- Front Working Lamps(only for Cabin)
- Rear Working Lamps(only for Cabin)
- Signal Lamp
- Air Conditioner/Heater(only for Cabin)
- Rear Window Defroster(only for 40hp)
- Towing Hook
- PTO Cover
- Cup Holder
- Tool Box(only for Cabin)
- 7 Pin Socket
- Floor Mat
- Auto PTO
- 7 Pin Socket
- Safety filter

OPTIONAL EQUIPMENT

- MID PTO
- Front Weights
- Rear Weights
- Beacon Wireharness
- Stereo(only for Cabin)
- Rear Window Wiper(only for Cabin)
- Swing Drawbar
- Cassete Type Lower Link(only for 35hp)
- Lift Rod(gear type)
- Rear Window Defroster(35hp)
- Sun Canopy(only for ROPS)
- Lower Link(Telescopic)
- Joystick Valve(only for 35hp)
- 4-Port Hyd. Remote Valve (only for 35HP w/ ROPS)

ATTACHMENTS

- Front Loader
- Rotary Tiller

* NOTE : Specifications and design are subject to change without notice.

KIOTI TRACTOR CK10 HST SERIES



SPECIFICATIONS

MODEL	CK3510HU	CK3510CH	CK4010HU	CK4010CH	
ENGINE					
Manufacturer	Daedong				
Model	3B183				
Engine Gross Power	HP	35.0		38.0	
Rated Revolution	rpm	2,600			
Type	3cylinder, water-coollder 4cycle Diesel.				
Total displacement	cc	1,826			
Fuel Tank	ℓ	34.0			
Rear PTO	rpm	Live Rear: 540/750, Mid: 2000(opt.)			
DRIVE TRAIN					
Transmission	HST				
No. of Speeds	3 ranges				
Differential Lock	Rear Standard				
Traveling Speeds Forward	km/h	0 ~ 23.91			
Traveling Speeds Reverse	km/h	0 ~ 21.52			
HYDRAULIC					
3 Point Lift Control Type	Position				
Implement Pump	lpm	26			
Power Steering Pump	lpm	16.9			
Total Hydraulic Flow	lpm	42.9			
3-Point Hitch Type	Category I				
Lower Link Type		Ball		Quick	
Max. Lifting Capacity@Lift Point	kg.f	1,030			
Lifting Capacity@610mm Point (Through the Full Range)	kg.f	740			
No. of External Hydraulic Vavles	4 ports(std.)				
DIMENSIONS					
Overall Length (incl. 3-pt Hitch)	mm	3,070			
Overall Width (Minimum Tread)	mm	1,385			
Tread Width Front 4WD	mm	1,125			
Tread Width Rear	mm	1,102			
Overall Height (w/ AG Tire)	mm	2,500	2,315	2,500	2,315
Wheel Base	mm	1,670			
Ground(Crop) Clearance	mm	340			
Min. Turning Radius (With Brake)	mm	2,450			
Weight (with ROPS or CABIN)	kg.f	1,395	1,497	1,395	1,497
TIRE SIZE					
AG. Tire Front	7-16				
AG. Tire Rear	11.2-24				
Turf. Tire Front	27×8.5-15				
Turf. Tire Rear	41×14-20				
Industrial. Tire Front	27×8.5-15				
Industrial. Tire Rear	15-19.5				
Radial AG Tire Front	240/70R16				
Radial AG Tire Rear	360/70R24				

* NOTE : Specifications and design are subject to change without notice.

STANDARD EQUIPMENT

- Tilt Steering
- Rear PTO
- 4-Port Hyd. Remote Valve (only for 40HP and Cabin)
- Joystick Valve(only for 40hp)
- Rear View Mirror(2set)
- Parking Brake
- Front Working Lamps(only for Cabin)
- Rear Working Lamps(only for Cabin)
- Signal Lamp
- Air Conditioner/Heater(only for Cabin)
- Rear Window Defroster(only for 40hp)
- Towing Hook
- PTO Cover
- Cup Holder
- HST Cruise(only for 40hp)
- HST Link(only for 40hp)
- Tool Box(only for Cabin)
- Floor Mat
- 7 Pin Socket

OPTIONAL EQUIPMENT

- MID PTO
- Front Weights
- Rear Weights
- Beacon Wireharness
- Stereo(only for Cabin)
- Rear Window Wiper(only for Cabin)
- Swing Drawbar
- Cassete Type Lower Link(only for 35hp)
- Tool Box(for ROPS model)
- Rear Window Hot-Wire(35hp)
- Joystick Valve(only for 35hp)
- 4-Port Hyd. Remote Valve (only for 35HP w/ ROPS)
- Sun Canopy(only for ROPS)
- Lower Link(Telescopic)
- HST Cruise(only for 35hp)
- HST Link(only for 35hp)

ATTACHMENTS

- Front Loader
- Rotary Tiller

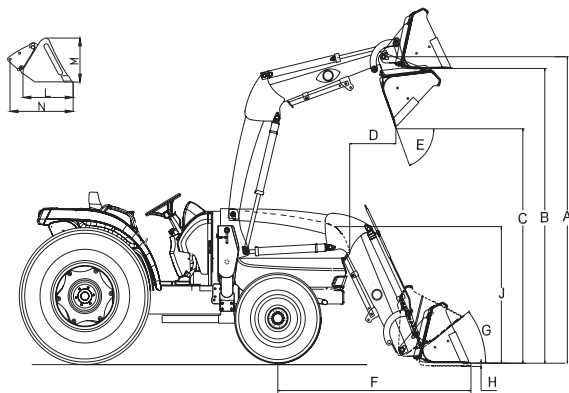




Front End Loader

KIOTI KL4010 front end loader is specifically designed for the CK10/20 Series, providing efficient performance with single lever joystick control and a dual lever quick attach bucket. The loader is designed to be quickly and easily attached and detached with the assistance of a built-in parking stand.

KL loader series utilizes the tractor's hydraulic system, single-lever control with float and it comes with a bucket level indicator.



Loader Specification

MODEL	KL4010
A Maximum Lift Height to Pivot Pin	98.4 in. (2,500 mm)
B Clearance w/ Bucket Level	93 in. (2,360 mm)
C Clearance w/ Bucket Dumped	79.1 in. (2,010 mm)
D Reach at Maximum Height (45°)	27.2 in. (690 mm)
E Maximum Dump Angle	48°
F Reach w/ Bucket on Ground	62.2 in. (1,580 mm)
G Maximum Rollback Angle	28°
H Digging Depth Below Grade	5.3 in. (135 mm)
J Overall Height in Carry Position	49.6 in. (1,260 mm)
L Bucket Depth (Inner Shell)	19.9 in. (505 mm)
M Bucket Height	20.7 in. (526 mm)
N Bucket Length (Pivot Pin)	26.9 in. (682 mm)
Lift Capacity at 59.84 in. (1,520 mm) Pivot Pin Height	1,835 lbs. (832 kg)
Breakout Force at Pivot Pins	3,464 lbs. (1,571 kg)
Relief Valve Setting (Loader Control Valve)	2,560 psi
Rated Flow (Tractor System)	6.9 gpm (26.12 L/min)
Bucket Size(s) Available (QA)	60 in. / 66 in.
Approximate Weight (With Bucket)	60 in.: 959 lbs. (435 kg) / 66 in.: 981 lbs. (445 kg)
Bucket Capacity (Heaped)	60 in.: 9.39 cu. ft. / 66 in.: 10.10 cu. ft.
Bucket Rollback Force at Ground Line	1,763.7 lbs. (800 kg)



Daedong Kioti Europe B.V.
 Koerilenstraat 2-6, 3199 LR, Maasvlakte
 Rotterdam The Netherlands
 Tel +31(0)181-35 30 24
 Website www.kioti.eu

Dealer Imprint Area

LIT-CK10-ALL1