



ISO 9001 Certified
NO: 954596
Quality Management
System



ISO 14001 Certified
NO: 771475
Quality Management
System



OHSAS 18001 Certified
NO: K033008
Safety and Clean
Management System



World Class
300 Awarded

Trust us. *We are Daedong!*



DAEDONG



2493, Nambusunhwan-ro, Seocho-Ku, Seoul, Korea
Tel. 82-2-3470-7470 Fax. 82-2-3470-7484~5
www.daedong.co.kr

DAEDONG

Message from the CEO

Daedong Industrial Company - in the forefront of Korean agricultural machinery development ever since its foundation in 1947, Daedong Industrial Company has taken the role of leader in the fields of modernization of the agricultural industry and development of agricultural machinery by producing the first cultivating machine.

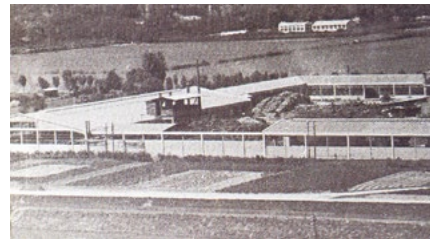
Daedong, not satisfied with its position as the national leader in the agricultural machinery industry is endeavoring to become a global enterprise in the world market with continuous development of technology and overseas marketing. Through its global network including local corporations in the USA and China with the parts center in Europe, Daedong and its export brand KIOTI can be found all over the world.

The addition of its cutting-edge engine production line in 2006 has enabled Daedong to meet the various demands of the machinery industry with the capacity of 40,000 units per year of multi-cylinder engines of consistent quality through automated production.

Furthermore, Daedong R&D Center is continuously expanding its field of research through the development of environment friendly diesel engines and new products. In line with the development of these products and the quality control system, Daedong has been awarded the EPA, EEC, ISO9001 and ISO14001 certifications.

It is Daedong's promise to their clients to supply the best products and service with worldwide competitiveness. Daedong has dedicated the past 67 years to becoming a clean enterprise, developing the future agricultural environment, with its people always doing their best, and sharing their effort, pride and satisfaction with the farmers... The entire Daedong staff strives to achieve these goals today.

DAEDONG HISTORY	02
DAEDONG GROUP	04
TIER 4 ENGINE	08
CS2610	10
CK2810	12
CK3510 CK4010	14
DK4510 DK5010 DK5510	16
NX SERIES	18
RX SERIES	20
PX SERIES	24
UTV	28
COMBINE	34
RICE TRANSPLANTER	36
POWER TILLER	38



1947
Foundation of DAEDONG Industrial in Jin-ju city, Kyungsangnamdo.



1956
Motor, Diesel Motor, and Multi Cylinder Engine Manufactured



1962
First Power Tiller Produced in Korea.



1993
DAEDONG USA Established



1996
ISO 9001 & ISO 14001 Certified



2007
DAEDONG CHINA Established



1968
First Tractor Produced in Korea



1970
First Combine Harvester Produced in Korea



1973
First Rice Transplanter Produced in Korea



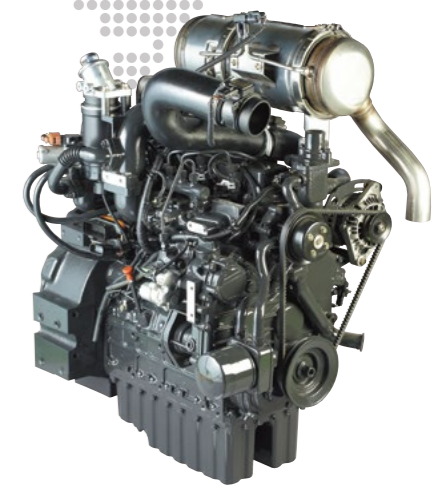
2008
USD 100 Million Export Award



2009
First Mechchron2200-UTV Produced in Korea



2010
DAEDONG EUROPE Established(Netherlands)



2013
First Tier 4 Engine(Common Rail Direct Injection) Produced in Korea

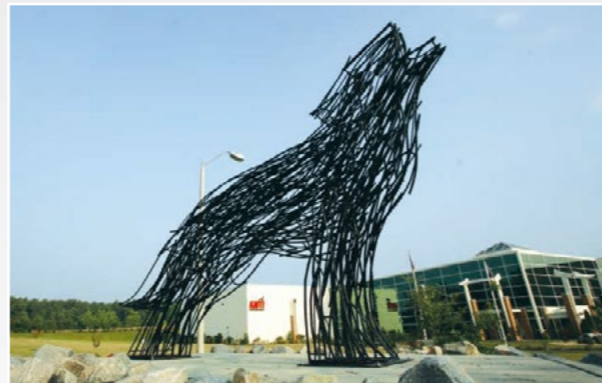
DAEDONG HISTORY



Go Beyond a Border

Global Trading & Investment Company

Kioti operates a comprehensive global distribution network, including two subsidiary companies with a part center, in more than 70 countries. This extensive and organized global network has enabled Kioti to grow as a global enterprise, while striving for a core value-consumer satisfaction.





DAEDONG KIOTI EUROPE B.V
KIOTI EUROPEAN PARTS CENTER B.V
Stationsweg 36, 3214 VK ZUildland, Netherlands
TEL : 31-181-45-88-45 FAX : 31-181-45-21-14



DAEDONG AGRICULTURAL MACHINERY (ANHUI) CO., LTD.
Intersection of weier RD. and Jingsan RD.,
Quanjiao Economic Development Zone.
Chuzhou, Anhui, China
TEL : 86-550-525-0888 FAX : 86-550-525-0888
www.daedong.com.cn



DAEDONG INDUSTRIAL CO., LTD.
1-12, Buk-Ri, Nongong-Eub, Dalsung-Kun, Deagu, Korea
TEL : 82-53-610-3000 FAX : 82-53-610-3359
www.daedong.co.kr



HANKUK CHAIN IND.CO., LTD.
177, Kunji-Ri, Daeduk-Myun, Ansong-Si,
Kyounggi-Do, Korea
TEL : 82-31-673-5544~8 FAX : 82-31-675-4396
www.hanchain.co.kr



DAEDONG GEAR CO., LTD.
71, Yuchon-Ri, Sanam-Myun, Sachon-Si,
Gyeongsangnam-Do, Korea
TEL : 82-55-851-2300,2400 FAX : 82-55-852-6135
www.daedonggear.com



DAEDONG METALS CO., LTD.
29-18, Bonri-Dong, Nonkong up,
Dalsung-Gun, Daegu, Korea
TEL : 82-53-610-5000 FAX : 82-53-610-0715
www.daedongmetals.co.kr



DAEDONG U.S.A. INC.
6300 Kioti Dr. Wendell, NC 27591, USA
TEL : 1-919-374-5100 FAX : 1-919-374-5001
www.kiotitractor.com



DAEDONG R&D CENTER.
400-1 Chikgyo-ri, Changnyung-Kun,
Gyeongsangnam-Do, Korea
TEL : 82-55-530-7100 FAX : 82-55-530-7111



DAEDONG TRAINING CENTER.
400-1 Chikgyo-ri, Changnyung-Kun,
Gyeongsangnam-Do, Korea
TEL : 82-55-532-0435 FAX : 82-55-532-0436



SEOUL OFFICE
1422-5, Seocho-Dong, Seocho-Ku, Seoul, Korea
TEL : 82-2-3470-7445~64 FAX : 82-2-3470-7484~85



*Moving the World with
Daedong*

Daedong Engines.

World-Class Daedong Diesel Engines.

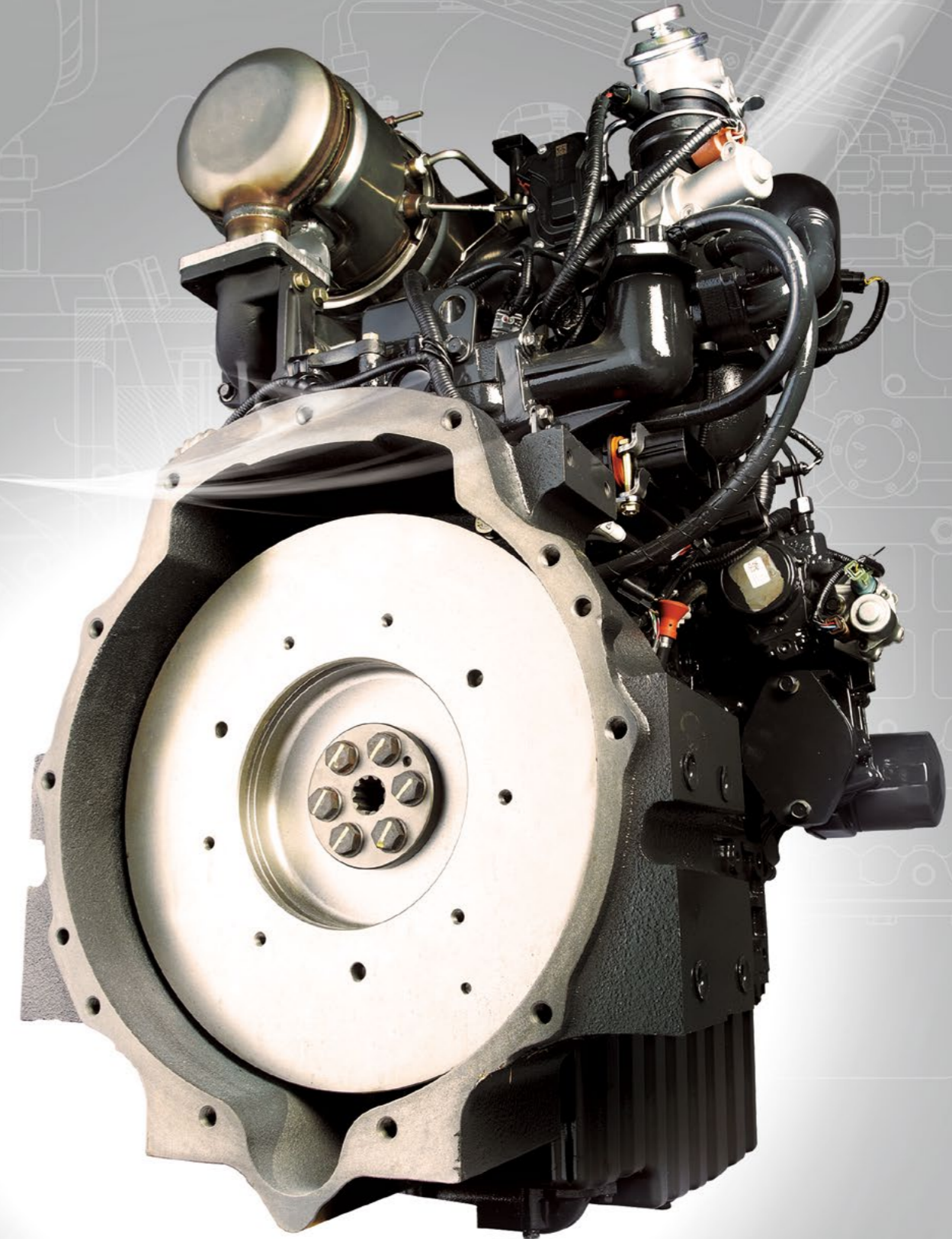
KIOTI Tractors are proudly equipped with high-performance, fuel-efficient Daedong® diesel engines. Through more than 65 years of continual innovation, the Daedong engine line has been refined, enhanced and expanded upon, and is now recognized as one of the finest in the world. Today, Daedong Industrial Co. proudly produces high quality diesel engines ranging from 20-60 horsepower, all of which are built in line with EPA, EC, CARB, ISO 9001 and ISO 14001 certifications.

Tier 4 Daedong® Diesel Technology

To ensure total customer satisfaction, Daedong Industrial Co., Ltd. has been committed to the continual improvement of products through technical innovation. Daedong Industrial Co., Ltd. has been working diligently toward Tier 4 emissions regulation standards. With extensive and rigorous development, the latest Tier 4 family of Daedong® engines deliver the same powerful and fuel efficient performance our customers have grown to expect. This new family of engines integrate the latest Tier 4 technologies with the trusted Daedong® engine performance.

Daedong® Engines

Undergo rigorous and extensive testing, monitoring, and data analysis
Meet or exceed regulation standards for emission performance
Provide high power against weight and superior durability
Low speed, high torque engines ideal for industrial use
High ratio of common parts usage for easy upkeep
One-Side Service for oil filling, oil gauge and oil filter for easy maintenance
are covered by KIOTI's Industry Leading Warranty





Headlights
55W lamps are the brightest in this tractor's class.



Four Wheel Drive
4WD is standard on the CS2610 tractor and a single lever engages the 4WD.



Foldable ROPS
The standard fold-down roll bar makes it quick and easy to maneuver in low clearance areas.

CS2610

KIOTI Sub Compact Tractor



Rear PTO and 3-Point Hitch
The rear PTO and high capacity three point hitch can accommodate a variety of implements and attachments. The flip up PTO guard ensures easy implement attachment. The bent lower link assist with easy implement installation.



Left Hand Lever Controls
The HST with HI-LO range lever allows the tractor to overcome a wide range of load tasks. The rear PTO and mid PTO can be controlled separately or together with a simple in-line shifting lever. The height adjustment lever allows the operator to control the mid-mount mower grass cutting height easily.



Ergonomic Operator Station
The ergonomically designed work station places operator controls within easy reach to enjoy a comfortable and smooth ride. The retractable seat belt is included for safety.



Premium Diesel Engine
A 24.5 HP optimized combustion diesel engine has large power output yet low fuel consumption. The engine oil level check and engine oil refill cap are easily accessible.

CK2810

KIOTI Compact Utility Tractor



New Compact design

Compact but more Powerful CK2810 comes with new streamlined hood design, which improves visibility and service ability of the operator. A vertical opening hood allows for easy access to the air filter, fluid service, use box and electrical components for inspection.



Powerful Environmentally Friendly Engine

The Powerful Environmentally Friendly 28hp 'Green' Engine will offer operator quietest, smoothest but most powerful working condition.



Foldable ROPS

The standard foldable ROPS makes it quick and easy to maneuver in low clearance areas.



Hydraulic 4WD

Front wheel driving is easily engaged by hydraulic clutch.



1 Power Steering wheel

With hydraulic power steering, experience smooth responsive steering that requires minimal operator effort regardless of the task at hand.

2 Illuminated Dashboard

The dashboard illuminates when the engine starts. The digital gauge package includes tachometer, fuel and temperature gauges along with low fuel and high temperature warning lamp.

CK3510 | CK4010

KIOTI Economical Tractor



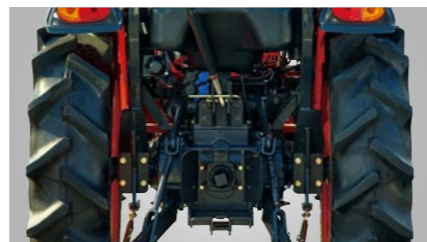
Equipped with new Stage 4/Tier 4 engines, new CK tractor provides better engine responsiveness while maintaining the best levels of fuel consumption. The extra power is thanks to the engine power management feature which automatically boosts power to increase output for a range of work taking account of PTO operation, travel speed and load.



New CK tractors have been designed to provide high levels of performance and reliability to smaller farming and orchard business

Instrument panel provides a complete and clear display of all the information the driver needs to operate the tractor safely and efficiently.

Easy to move forward and reverse with quick step pedal



DK series

DK4510 | DK5010 | DK5510
KIOTI Valuable Tractor



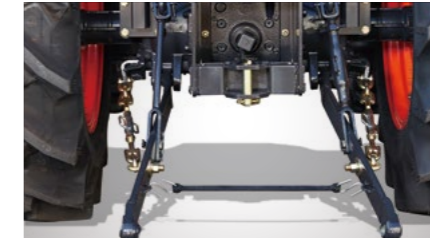
Power Steering/Tilt Handle

The standard power steering minimizes the effort required to make tight, repetitive turns. The steering wheel tilts with the simple push of lever, allowing easy adjustment to fit the operator needs.



Deluxe Suspension Seat

Ergonomically designed, adjustable suspension seat allows the operator to ride in comfort no matter what the task may be. A pocket on the back of the seat allows easy access for the operator's manual.



Improved Performance

Improved work capability with high lift capacity(1,232kgf) and big hydraulic pump capacity(55.3l/min) Also increased hydraulic flow with more proportion for implement.



Eco-Friendly Diesel Engine (55HP Only)

The new Common Rail Diesel Engine (CRDI) and 3-cylinder system improve fuel efficiency over 20% while reducing noise levels. With this eco-friendly engine, New DK series offers the operator a quiet work environment with powerful performance.



1 Power & Mechanical Shuttle Lever

Shuttle lever enables easy back-and-forth operation, reducing operator's fatigue dramatically. Perfect for loader work! Especially the power shuttle lever which provides easier and softer shuttle operation without pressing the clutch pedal.

2 Freely adjustable steering wheel and instrument panel

The steering wheel is fully adjustable to fit each operator's stature. The instrument panel can also be adjusted to give the operator the optimum reading angle.

3 Hi-Low Lever

Smooth gearshift with Hi-Low function / No need for the pedal with our new Hand clutch! / Smooth 32 X 32 transmission travel speed with upgrading gearshift.



PTO Cruise (55HP Only)

Thanks to ECU controlled engine, PTO RPM(Engine RPM) can be maintained at the set value even with the variable load condition.

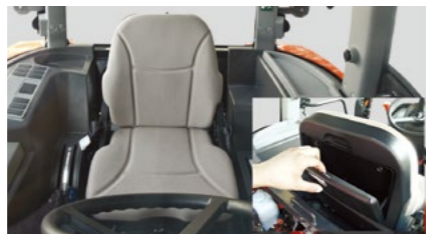


Tail Lamp

High visibility tail lamps keep you in safety as well as accomplish the styling of New DK series.

NX series

NX4520 | NX5020 | NX5520 | NX6020
KIOTI Ultimate Versatility Tractor



Deluxe Suspension Seat

Ergonomically designed, adjustable suspension seat allows the operator to ride in comfort no matter what the task may be. A pocket on the back of the seat allows easy access for the operator's manual.



Durable and Powerful HST Transmission

HST models feature performance-proven, heavy duty HST drives that deliver power smoothly and efficiently. The three range transmission (Hi/ Mid/ Low) with twin pedal operation makes your job easier, smoother and safer.



HST Linked Pedal

When the HST linked pedal is engaged, the HST pedal and the engine rpm is synchronized. This reduces fuel consumption and simplifies tractor operation for a variety of utility and loader applications.



Ergonomic Joystick Lever

An ergonomically designed joystick lever for front loader operation is standard on NX series tractors.



True Speed Cruise Control

Electronic HST control system enables the tractor to maintain a set speed no matter what the condition of the ground or load is. This is a very useful feature for work requiring a set speed for precise coverage or application.



1 Panoramic View

The comfortable cab with upgraded interior minimizes operator fatigue even after a long work day. The improved wiper position maintains a clear view for the operator.

2 Advanced Air Conditioning System

The improved Cooling and Heating system will ensure comfortable working conditions for the operator year round.

3 Convenient Control Lever

An easy access lever controls lights, horn and signals and is located on the right hand side of the steering column.

4 Power Steering

Hydrostatic power steering minimizes the effort required to make tight, repetitive turns. The steering wheel tilts with the simple push of a lever, allowing easy adjustment to fit the operator needs.

RX series

RX6030 | RX6630 | RX7630
KIOTI Utility Tractor



Deluxe Suspension Seat

Ergonomical designed-fully adjustable suspension seat with fabric seat allow the operator to ride in comfort no matter what the jobs may be. The seat back incorporates a built in pocket for storing of the operators manual.



Low Noise, Low Vibration

Experience the RX with its new anti-vibration technology. Dramatically reduced vibration and operator in best working condition for all day long.



PTO CRUISE

PTO rpm can be fixed by simply engaging the button no matter how big the load is. This helps to keep the PTO rpm stable. When in use, the operator can manipulate the PTO rpm speed by simply clicking inc.(+) or Dec. (-) switch.



High Projection Head and Working Lamp

With the new projection head and working lamp, the operator will experience safe and easier operation in the dark operating conditions.



Modern and elegant "Kioti" design
The Modern and elegant "Kioti" design enables quick and convenient access for daily maintenance.

Experience the New and Powerful RX Series



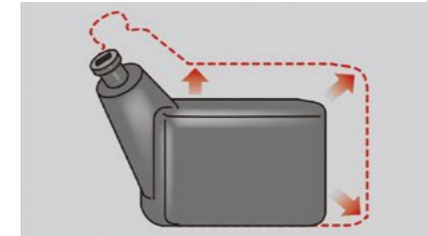
24x24 fully synchronized transmission

The fully synchronized transmission provides smooth and easy shifting on the move. The 24 forward and 24 reverse transmission (with Creeper gear) provides the operator with more variety of speed range to handle all kinds of jobs.



Auto & Hydraulic PTO

The standard rear PTO is easily engaged by the simple push of button. Auto PTO switch provides selection of manual and automatic PTO engagement. When Auto PTO is engaged, the PTO will automatically stop when the implement is raised, eliminating exposure to the running implements. A safety interlock prevents engine start when the PTO switch is left on.



Fuel Tank(95l)

The increased 95 liter fuel tank allows productive working hours without the need for the frequent re-fueling.



Hydraulic 4WD

The 4WD is engaged with just simple push of switch.



1 Wider and clearer view

The new comfortable cabin with upgraded interior will minimize operators fatigue even after long days of work. The front glass with improved wiper position and cabin sealing method provides better visibility and improved noise protection.

2 Improved Air Conditioning System

The improved Cooling and Heating system will ensure cooler and warmer working condition for the operator.

3 Adjustable Power Steering

With hydraulic power steering, tractor has a smooth responsive steering that requires minimal operator effort regardless of the task at hand.

PX series

PX9020 | PX1002C
KIOTI Agricultural Tractor



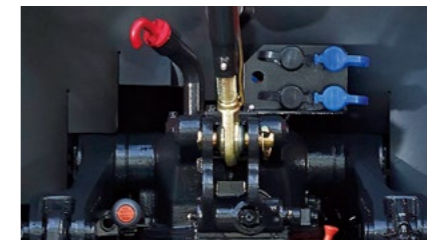
Lower Wiper Kit

Lower located wipers guarantee clear and broad visibility.



Rear Window Wiper / Rear Working Lamp

The rear window wiper makes operators see clearly even when working backward and keep clean from rain and dust!. PX tractor ensures night work with side lamps and adjustable lamps.



Rear Remote Hydraulic Valve

The PX series comes standard with a dual remote hydraulic valve with different colors to accommodate a wide variety of attachments and implements. PX series tractor offers up to second remote hydraulic valve as an option.



One-Touch, Open-Typed Bonnet

This allows easy inspection and maintenance, reducing downtime and upkeep costs.



Projection Lamp

Thanks to the new projection headlamp and working lamp, operators will experience safer and easier operation in dark.



Deluxe Seat

A fully adjustable suspension seat allows the operator to ride in comfort no matter what the job may be.



CD Player

Pleasant working conditions.

Dynamic and Linear Design PX Series



① Power & Mechanical Shuttle Lever
Shuttle lever enables easy back-and-forth operation, reducing operator's fatigue dramatically. Perfect for loader work! Especially the power shuttle lever which provides easier and softer shuttle operation without pressing the clutch pedal.

② Freely adjustable steering wheel and instrument panel
The steering wheel is fully adjustable to fit each operator's stature. The instrument panel can also be adjusted to give the operator the optimum reading angle.

③ Hi-Low Lever
Smooth gearshift with Hi-Low function / No need for the pedal with our new Hand clutch! / Smooth 32 X 32 transmission travel speed with upgrading gearshift.

④ Deluxe Seat
A fully adjustable suspension seat allows the operator to ride in comfort no matter what the job may be.

⑤ Mobile Holder
Keep your mobile safe!



UTV

The Ultimate Transport Vehicle
MECHRON Diesel
 2200 | 2210 | 2230 | 2240
MECHRON Gasoline 250 | 500



Engine

The Daedong 3C100LWU (1007 cc, 22HP) diesel engine has been field proven for durability and dependability while offering improved fuel economy.



Standard Instrument Cluster

Speedometer in MPH(km/hr), hour meter, fuel gauge, coolant temperature gauge, and turn signal indicators are standard.



Dash Board

A cockpit designed dash features ergonomically located controls and instruments that allow the driver to view critical functions at a glance.



Front Suspension

A MacPherson Strut type suspension ensures the best ride of all the competition while providing the driver excellent road-feel and control.



Transmission

The Mechron has a popular Comet CVT Transmission, made in the USA, and has a time proven Daedong gear box with two speeds, (Hi/Lo) and 4WD.



Adjustable Rear Suspension

With an adjustable Wishbone type suspension, you can Fine-tune the MECHRON for the smoothest possible ride whether carrying a load or empty.



Rear Fenders

Reinforced, molded rear fenders mounted under the bed deck keep you and your MECHRON clean under the muddiest conditions.



Balancing weight and performance for full payloads



UTV 2230 has two external hydraulic port and cargo box which handle more than 500kg



UTV 2240 is equipped with two row seats so that more people can ride and move efficiently.

MRCHRON2240



Off-road tires for maximum traction and control in tough environments, or turf tyres to minimize damage to the ground



Each of these UTV is designated to work hard for a living. It is tough and versatile performer.

Go-everywhere and Do-everything Gasoline Compact UTV



Large and clear instrumentation
The gasoline UTV's instrument panel offers a convenient and quick-read layout, so you can spend more time with your eyes on the road. Monitor lamps include oil level, charge status and more.



Brush Guard
The heavy duty steel brush guard offers protection for the headlights, radiator, and front differential from rocks, tough brush, and other debris on the trail



Sun Canopy
Roof canopy fitted as standard – protection from sun and rain



Advanced technology from MECHRON 250 delivers exceptional performance and reliability in a compact size with 18hp gasoline engine



Used for a variety of applications, the MECHRON 500 is powerful and rugged enough to handle any terrain and job, whether you're tending to your animals, going shooting, maintaining you estate grounds or farmland.

Combine

**Compact & High
Performance
Fulfilling Needs
DSC 62 | DSM72G**



Ultimate Repair Environment

It is easy to fix and repair in one day due to efficient design. Convenient detachable Cutting device slide.



Your time is valuable.

If speed is important to you, Daedong combine is the fastest Combine, with a 1.62m/s working speed.



Wireless Remote

With wireless remote controller, even sole worker is possible to work long distance.

Rice Transplanter

Clean Power, Top technology,
Big performance
ERP60D

Reliable, economical engines
Daedong new ERP60D are powered by fuel efficient. ERP60D have been specifically designed to achieve optimum productivity and operation.



Built for driver comfort and efficiency



Controls

Integrated design and logical control placement keeps the operator focus and safe.



Dual shift function

During working, you can choose both working pedal and lever to further increase work efficiency.



Easy grip handle

Unique, multifunctional lever for operating.



Comfortable seat with Suspension

A high quality, adjustable, suspension seat maintains operator comfort for long hours of work while minimizing operator fatigue.



Convenient

Enough receipt space which can store variety stuff.

Power Tiller

Versatile, Reliable DT100NS



Engine

The 2-stage fuel-injection system and the durable, waterproof starter motor guarantees starts even during the coldest weather. A dustproof rubber cover greatly reduces vibration of the fuel-efficient engine.



Belt Cover

High-intensity plastic improves safety with its excellent durability, safety and shock resistant features. It will not break in low temperature.



Fuel Filter

A special filter paper on the fuel filter efficiently prevents fine particles and water from entering the fuel.



Headlight and Turn Signal Lights All in One

Turn signal lights to the left and right of the headlight promise additional safety while driving on public roads. The headlight reflector efficiency has been increased to make the headlight brighter.



Turn Signal Light Switch

A conveniently attached turn signal light switch simultaneously operates both the tiller's and trailer's turn signal lights.



Driveshaft Pto Extension

An additional PTO shaft allows a wide range of functions including operating the sprayer.



Accessories

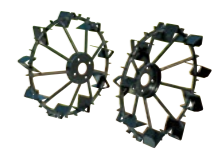


Trailer

Plow



Rotary



Paddy Wheels



Ridger

CS2610

Specifications

Model	CS2610	
ENGINE		
Model	S773L-EU	
Type	3 cyl. Diesel with Pressurized Radiator	
Engine Gross	HP(kW)	26 (19.4)
PTO	HP(kW)	20.5 (19.3)
Displacement	cu.in.(cc)	69.0 (1131)
Rated Revolution	rpm	3,000
Fuel Tank Capacity	(ℓ)	25.5
DRIVE TRAIN		
Transmission	HST	
Speeds	Infinite, 2 range	
Differential Lock	Rear Standard	
Brake	Wet Disc Type	
PTO	Independent	
Rear PTO	(rpm)	540
Mid PTO	(rpm)	2,200
HYDRAULIC SYSTEM		
Pump	Gear	
Pump Capacity (Max. flow rate)	(ℓ /min)	24.6
3-Point Hitch	Category I	
Maximum lifting capacity (24" aft. of hitch)	(kg)	715 (318)
Hydraulic Lift Control System	Position	
Steering	Power Steering	
TIRE SIZE		
Front Turf, Industrial	18x 8.5-10	
Rear Turf, Industrial	26x 12.00-12	
TRAVELING SPEEDS		
Forward	(km/h)	0 ~ 16.6
Reverse	(km/h)	0 ~ 11.2
DIMENSIONS		
Overall Length (includes 3-pt hitch)	(mm)	2,523
Overall Width (minimum tread)	(mm)	1,270
Overall Height (W/ROPS)	(mm)	2,280
Wheelbase	(mm)	1,400
Min. Ground Clearance	(mm)	162
Tread	Tread Width Front 4WD (mm)	1,164
	Tread Width Rear (mm)	1,270
Min. Turning Radius (with brake)	feet(m)	2,540
Weight with ROPS	(kg.f)	700

*NOTE : Specifications and design are subject to change without notice.

Standard Equipment

- Rear PTO
- Mid PTO
- Joystick Valve¹
- Power Steering
- Parking Brake
- PTO cover
- Headlights
- Warning / Signal Lamps
- Cup Holder
- Horn
- Rear View Mirror
- 7 Pin Socket
- Power Socket

* ¹When loader is purchased with tractor.

Optional Equipment

- Front Hydraulic Valve
- Rear Hydraulic Valve
- Rear Working Lights
- Front Weight (60kg)
- Cruise Control
- Canopy Kit
- Front Towing Hook
- Hydraulic Filter Guard

Available KIOTI Attachments

- Front End Loader
- Mid Mount Mower

CK2810

Specifications

MODEL	CK2810	
ENGINE		
Model	3A139LWB	
Type	3Cyl, in-line Vertical, Water-cooled	
Engine gross	HP	28
Displacement	cc	1,393
Rated revolution	rpm	2,600
Fuel tank capacity	ℓ	25
DRIVE TRAIN		
Clutch	Dry single	
Transmission	Manual	
Speeds	3 X 2 (6F 2R)	
Differential lock (rear)	Standard	
Brake	Wet disc type	
	Transmission	
PTO	Rear rpm	540/750
	Mid(Optional) rpm	2,000
HYDRAULIC SYSTEM		
Pump	Gear(Tandem)	
Total Pump capacity at maximum flow	ℓ /min	42.9
3-point hitch	Cat. I	
Maximum lifting capacity(24 behind lift point)	kg	739(546)
Hydraulic lift control system	Position control	
Steering	Hydrostatic Power Steering	
TIRE SIZE		
AG Tire	Front	7-12
	Rear	11.2-16
Forward	km/h	0-17.15
Reverse	km/h	0-12.01
DIMENSIONS		
Overall length(including 3-pt hitch)	mm	2,790
Overall width(minimum tead)	mm	1,250
Overall height(from top of ROPS)	mm	2,108
Wheelbase	mm	1,520
Min. ground clearance	mm	330
Tread	Front mm	989
	Rear mm	950
Weight with ROPS	kg	1,025

Standard Equipment

- Double acting valve(1ea)
- Hydraulic Power Steering
- Folderble ROPS
- Differential lock(rear)

Optional Equipment

- Front weights
- Working lamp
- 7-Pin Connector

CK3510/4010

Specifications

Model	CK3510	CK4010
Manufacturer	Daedong	
Model	3B183LWM-E1	3B183LWM-E
Engine Gross Power	HP(kw)	35(26.1)
Rated revolution	rpm	2600
Engine Net Power	HP(kw)	33(24.7)
No.of cylinders		3
Total displace	cc (cu)	1826
Bore&stroke	mm(in.)	87x102.4
Cooling system		Water Cooled
Lubricating system		Trochoid Pump
CAPACITY		
Fuel tank	ℓ (us gal)	34
Maximum PTO Power	HP	30.8/33.5
PTO Efficiency	%	85%
PTO Fuel Consumption	ℓ /h(gph)	(268)
Rear PTO		Live
	rpm	540/750
Mid PTO	rpm	Option(2,000)
HYDRAULIC		
3 Point Lift Control Type		Positon
3-point hitch type		Category I
Lift capacity at lift point	kg.f(lbs.)	1030 (2270)
Lift capacity at 24 in.behind lift point	kg.f(lbs.)	740 (1631)
Transmission		Manual
Main gear shift x range gear shift		3 x 3
No. of speeds		9 x 3
shuttle Type		NA
Steering		Hydrostatic Power Steering
Brake type		Wet disc type
Main Clutch type		Dry dual
Main clutch diameter	mm(in.)	225
Mechanical differential lock		Rear Standard
Front wheel drive system		Manual
TRAVELING SPEEDS		
Forward	km/h(mph)	1.52~23.56
Reverse	km/h(mph)	1.90~15.39
OTHER TEATRES		
Tilt steering		N/A
One-Touch Hood type		O
DIMENSIONS		
Overall length (without 3-pt hitch)	mm(in.)	2701
Overall length(includes 3-pt hitch)	mm(in.)	3010
Overall length (with 3 point&front weight)	mm(in.)	3200
Overall width(minimum tread)	mm(in.)	1400
Tread width Front 4wd	mm(in.)	1132
Tread width Rear	mm(in.)	1302
Overall height(with ROPS)	mm(in.)	2430
Overall height (Top of Cabin)	mm(in.)	-
Wheel base	mm(in.)	1670
Ground(Crop) clearance	mm(in.)	340
Turning radius(w/brake)	mm(in.)	2450
Weight with ROPS	kg.f(lbs.)	1300
Weight with CABIN	kg.f(lbs.)	-
TIRE SIZE		
AG. Tire		
Front		7-16
Rear		11.2-24

Standard Equipment

- 4WD
- Rear PTO
- Horn
- Head lamp
- Signal lamp
- Fuel Tank cap
- PTO Cover

Optional Equipment

- Mild PTO
- Front weight
- Rear weight
- Joystick valve
- Rear view mirror
- 7Pin Socket
- Rear Work Light
- Towing Hook
- Front Grille Guard
- HST LINK
- Tool box
- Drawbar

*NOTE : The specifications are subject to change for the purpose of improvement without any notice.

DK4510/5010/5510

Specifications

Model	DK4510	DK5010	DK5510
ENGINE			
Manufacturer	Daedong	Daedong	Daedong
Model	4B243DL-A1	4B243DL-A	4B243DL-A
Engine Gross Power	HP(kw)	45(33.6)	50(37.3)
Rated revolution	rpm	2600	2600
No.of cylinders		4	4
Total displace	cc (cu)	2435	2435
Cooling system		Water Cooled	Water Cooled
Lubricating system		Trochoid Pump	Trochoid Pump
CAPACITY			
Fuel tank	ℓ (us gal)	45(11.9)	45(11.9)
PTO			
Maximum PTO Power	HP/rpm(KW)	38.5/2300	43.9/2400
PTO Efficiency	%	86	88
PTO Fuel Consumption	ℓ /h(gph)	7.6	8.7
Rear PTO		Independent	Independent
	rpm	540 / 750	540 / 750
Mid PTO	rpm	N/A	N/A
	rpm	N/A	N/A
HYDRAULIC			
3 Point Lift Control Type		Position, Draft, Mixed Control	Position, Draft, Mixed Control
3-point hitch type		Category I	Category I
Lift capacity at lift point	kg.f(lbs.)	1360	1360
Lift capacity at 24 in.behind lift point	kg.f(lbs.)	1232	1232
DRIVE TRAIN			
Transmission		Manual	Manual
Main gear shift x range gear shift		4 x 2	4 x 2
No. of speeds		8F8R	8F8R
shuttle Type		Synchro shuttle	Synchro shuttle
Steering		Hydrostatic Power Steering	Hydrostatic Power Steering
Brake type		Wet disc type	Wet disc type
TRAVELING SPEEDS			
Forward	km/h(mph)	2.17 - 27.9	2.17 - 27.9
Reverse	km/h(mph)	2.11 - 27.2	2.11 - 27.2
OTHER FEATURES			
Tilt steering		O	O
One-Touch Hood type		O	O
Flat Deck type(ISO-mounted w/rubber mat)		Semi-Flat Deck	Semi-Flat Deck
Panel type		Electric	Electric
DIMENSIONS			
Overall length (without 3-pt hitch)	mm(in.)	2898(114.1)	2898(114.1)
Overall length(includes 3-pt hitch)	mm(in.)	3157(124.3)	3157(124.3)
Overall length (with 3 point&front weight)	mm(in.)	3307(130.2)	3307(130.2)
Overall width(minimum tread)	mm(in.)	1596(62.8)	1596(62.8)
Tread width Front 4wd	mm(in.)	1254(49.4)	1254(49.4)
Tread width Rear	mm(in.)	1251(49.3)	1251(49.3)
Overall height(with ROPS)	mm(in.)	2246(88.5)	2246(88.5)
Overall height (Top of Cabin)	mm(in.)	-	-
Wheel base	mm(in.)	1810(71.3)	1810(71.3)
Ground(Crop) clearance	mm(in.)	347(13.7)	347(13.7)
TIRE SIZE			
AG. Tire	Front	8-16	8-16
	Rear	13.6-24	13.6-24
Turf Tire	Front	29-12.5-15	29-12.5-15
	Rear	21.5L-16.1	21.5L-16.1
Industrial Tire	Front	10-16.5	10-16.5
	Rear	14.9-24	14.9-24

Standard Equipment

- 4WD
- Rear PTO
- Auto PTO
- Draft Control

Optional Equipment

- Front Weight
- Rear Weight
- 7Pin Socket
- Front Work Light
- Rear Work Light

*NOTE : Specifications and design are subject to change without notice.

NX5020/5520/6020 - CABIN

Specifications

Model		NX5020CH	NX5520C	NX5520CH	NX6020CH
ENGINE					
Manufacturer		Daedong	Daedong	Daedong	Daedong
Model		4B243DH-A1	4B243DTM-A	4B243DTH-A	4B243DTH-A
Engine Gross Power	HP(kw)	49(36.5)	55(41.0)	55(41.0)	60(44.7)
Rated revolution	rpm	2600	2600	2600	2600
No. of cylinders		4	3	3	3
Total displacement	cc(cu in.)	2,435(148.5)	1,826(111.4)	1,826(111.4)	1,826(111.4)
CAPACITY					
Fuel tank	ℓ (us gal)	56	56	56	56
PTO					
Rated PTO Power/rpm	HP(kw)/rpm	36.5	46	43.1	48.3
Maximum PTO Power	HP(kw)	37.5	47.1	44.6	49
PTO Efficiency	%	74.5	83.6	78.4	83.7
PTO Efficiency(Gross power)	%	76.5	85.6	81.1	84.9
PTO Fuel Consumption	ℓ/h(gph)	9.3	9.6	9.1	9.8
Rear PTO		Independent	Independent	Independent	Independent
	rpm	540	540 / 540E	540	540
	rpm	563	588 / 786	563	563
Mid PTO		2,000	2,000	2,000	2,000
HYDRAULIC					
3 Point Lift Control Type		Mech. (Position, Draft, Mixed Control)	Mech. (Position, Draft, Mixed Control)	Mech. (Position, Draft, Mixed Control)	Mech. (Position, Draft, Mixed Control)
Implement Pump	lpm(cc/rev)	36.4 (14cc/rev)	36.4 (14cc/rev)	36.4 (14cc/rev)	36.4 (14cc/rev)
Power steering pump	lpm(cc/rev)	31.2 (12cc/rev)	26 (10cc/rev)	31.2 (12cc/rev)	31.2 (12cc/rev)
Total hydraulic flow	lpm(cc/rev)	67.6 (26cc/rev)	62.4 (24cc/rev)	67.6 (26cc/rev)	67.6 (26cc/rev)
3-point hitch type		Category I	Category II	Category II	Category II
Lower Link type		Cassette type	Cassette type	Cassette type	Cassette type
Check Link type		Stabilize (EX50 Type)	Stabilize (D500C Type)	Stabilize (D500C Type)	Stabilize (D500C Type)
Top Link type		Turn-buckle	Turn-buckle	Turn-buckle	Turn-buckle
Lift rod type		screw	screw	screw	screw
Lift Capacity					
@ lift point	kg.f(lbs)	1605(3538)	1605(3538)	1605(3538)	1605(3538)
@24 in.behind lift point	kg.f(lbs)	1441(3177)	1441(3177)	1441(3177)	1441(3177)
Drawbar type		Drawbar	Drawbar	Drawbar	Drawbar
Max. Drawbar vertical load	kg.f(lbs)	750(1655)	750(1655)	750(1655)	750(1655)
Max. Trailer loading weight	kg.f(lbs)	4300(9480)	4300(9480)	4300(9480)	4300(9480)
Towing					
Towing Load	KN	9.36	12.85	11.95	12.3
Driving speed	Km/h	6.2	6.86	5.7	5.9
Towing Power	HP(KW)	20.6	39	26.9	28.9
No. of standard remote valves (Rear)		2	2	2	2
DRIVE TRAIN					
Transmission		Hydrostatic	Manual	Hydrostatic	Hydrostatic
Main gear shift x range gear shift		INF. 3	4X3X2	INF. 3	INF. 3
No. of speeds		3	24X24	3	3
shuttle Type		Hydrostatic Drive	Synchro shuttle	Hydrostatic Drive	Hydrostatic Drive
Steering		Hydrostatic Power Steering	Hydrostatic Power Steering	Hydrostatic Power Steering	Hydrostatic Power Steering
Main Brake type		Wet Muti Disc	Wet Muti Disc	Wet Muti Disc	Wet Muti Disc
Parking Brake type		Wet Muti Disc	Wet Muti Disc	Wet Muti Disc	Wet Muti Disc
Main Clutch type		None	Dry type single stage	None	None
Mechanical differential lock		Rear Standard	Rear standard	Rear Standard	Rear Standard
Front wheel drive system		Hydraulic Dog Clutch	Hydraulic Dog Clutch	Hydraulic Dog Clutch	Hydraulic Dog Clutch
TRAVELING SPEEDS					
Forward	km/h(mph)	0~27.98(0~17.39)	0.19~27.93(0.12~17.35)	0~29.38(0~18.26)	0~29.38(0~18.26)
Reverse	km/h(mph)	0~27.98(0~17.39)	0.17~24.82(0.11~15.42)	0~29.38(0~18.26)	0~29.38(0~18.26)

Specifications

Model		NX5020CH	NX5520C	NX5520CH	NX6020CH
OTHER FEATURES					
Tilt steering		0	0	0	0
One-Touch Hood type		0	0	0	0
Flat Deck type (ISO-mounted w/rubber mat)		0	0	0	0
DIMENSIONS					
Overall length (w/o front weight and w/o 3pt hitch)	mm(in.)	3249	3249	3249	3249
Overall length (w/o front weight and w/3pt hitch)	mm(in.)	3547	3547	3547	3547
Overall length (w/front weight and w/3pt hitch)	mm(in.)	3742	3742	3742	3742
Overall width (minimum tread)	mm(in.)	1665	1669	1665	1669
Tread width - Front	mm(in.)	1352	1355	1352	1355
Tread width - Rear	mm(in.)	1324	1334	1324	1334
Overall height (ROPS)	mm(in.)	2429	2452	2429	2452
Overall height (CAB)	mm(in.)	2390	2440	2390	2440
Wheel base	mm(in.)	1920	1920	1920	1920
Ground(Crop) clearance	mm(in.)	350	400	350	400
Turning radius(w/o brake)	mm(in.)	3.39	3.69	3.69	3.69
Turning radius(w/brake)	mm(in.)	2.99	3.04	3.04	3.04
Weight with Cabin and AG tires	kg.f(lbs)	1988	2077	2063	2063
TIRE SIZE					
AG. Tire					
Front		9.5-16	9.5-18	9.5-18	9.5-18
Rear		13.6-26	13.6-28	13.6-28	13.6-28

*NOTE : Specifications and design are subject to change without notice

Standard Equipment

- Creep gear
- 4WD
- Joystick valve
- Rear PTO
- Parking brake alarm
- AUTO PTO
- Draft Control
- Depth Control
- Radio Cassette Player/CDP
- Horn

Optional Equipment

- Mid PTO
- Air suspension seat
- External hydraulic floating
- Function

NX4520 / 5020 / 5520 / 6020 - ROPS

Specifications

Model		NX4520H	NX5010	NX5020H	NX5520	NX5520H	NX6020H
ENGINE							
Manufacturer		Daedong	Daedong	Daedong	Daedong	Daedong	Daedong
Model		4B243DH-A	4B243LWMR	4B243DH-A1	4B243DTM-A	4B243DTH-A	4B243DTH-A
Engine Gross Power	HP(kw)	45(33.6)	49(36.5)	49(36.5)	55(41.0)	55(41.0)	60(44.7)
Rated revolution	rpm	2600	2600	2600	2600	2600	2600
No. of cylinders		4	4	4	3	3	3
Total displacement	cc(cu in.)	2,197(134)	2,435(148.5)	2,435(148.5)	1,826(111.4)	1,826(111.4)	1,826(111.4)
CAPACITY							
Fuel tank	ℓ (us gal)	56	56	56	56	56	56
PTO							
Rated PTO Power/rpm	HP(kw)/rpm	32.2	35.7	36.5	46	43.1	48.3
Maximum PTO Power	HP(kw)	33.2	37.2	37.5	47.1	44.6	49
PTO Efficiency	%	71.6	72.9	74.5	83.6	78.4	83.7
PTO Efficiency(Gross power)	%	73.8	75.9	76.5	85.6	81.1	84.9
PTO Fuel Consumption	kg/h(gph)	8.48	9.0	9.3	9.6	9.1	9.8
Rear PTO		Independent	Independent	Independent	Independent	Independent	Independent
	rpm	540	540 / 540E	540	540 / 540E	540	540
	rpm	563	588 / 786	563	588 / 786	563	563
Mid PTO		2,000	2,000	2,000	2,000	2,000	2,000
HYDRAULIC							
3 Point Lift Control Type		Mech. (Position, Draft, Mixed Control)	Mech. (Position, Draft, Mixed Control)	Mech. (Position, Draft, Mixed Control)	Mech. (Position, Draft, Mixed Control)	Mech. (Position, Draft, Mixed Control)	Mech. (Position, Draft, Mixed Control)
Implement Pump	lpm(cc/rev)	36.4 (14cc/rev)	36.4 (14cc/rev)	36.4 (14cc/rev)	36.4 (14cc/rev)	36.4 (14cc/rev)	36.4 (14cc/rev)
Power steering pump	lpm(cc/rev)	31.2 (12cc/rev)	26 (10cc/rev)	31.2 (12cc/rev)	26 (10cc/rev)	31.2 (12cc/rev)	31.2 (12cc/rev)
Total hydraulic flow	lpm(cc/rev)	67.6 (26cc/rev)	62.4 (24cc/rev)	67.6 (26cc/rev)	62.4 (24cc/rev)	67.6 (26cc/rev)	67.6 (26cc/rev)
3-point hitch type		Category I	Category I	Category I	Category I, II	Category I, II	Category I, II
Lower Link type		Quick type	Quick type	Quick type	Quick type	Quick type	Quick type
Check Link type		Stabilize (D500C Type)	Stabilize (D500C Type)	Stabilize (D500C Type)	Stabilize (D500C Type)	Stabilize (D500C Type)	Stabilize (D500C Type)
Top Link type		Turn-buckle	Turn-buckle	Turn-buckle	Turn-buckle	Turn-buckle	Turn-buckle
Lift rod type		screw	screw	screw	screw	screw	screw
Lift Capacity							
@ lift point	kg.f(lbs)	1605(3538)	1605(3538)	1605(3538)	1605(3538)	1605(3538)	1605(3538)
@ 24 in. behind lift point	kg.f(lbs)	1441(3177)	1441(3177)	1441(3177)	1441(3177)	1441(3177)	1441(3177)
Drawbar type		Drawbar(Clevis)	Drawbar(Clevis)	Drawbar(Clevis)	Drawbar(Clevis)	Drawbar(Clevis)	Drawbar(Clevis)
Max. Drawbar vertical load	kg.f(lbs)	750(1655)	750(1655)	750(1655)	750(1655)	750(1655)	750(1655)
Max. Trailer loading weight	kg.f(lbs)	4300(9480)	4300(9480)	4300(9480)	4300(9480)	4300(9480)	4300(9480)
Towing							
Driving speed	Km/h	13.1	16.7	13.3	17.4	7.9	13.7
Towing Power	HP(KW)	19	29.8	20.5	36.1	21	24.6
No. of standard remote valves (Rear)		2	2	2	2	2	2
DRIVE TRAIN							
Transmission		Hydrostatic	Manual	Hydrostatic	Manual	Hydrostatic	Hydrostatic
Main gear shift x range gear shift		INF. 3	4X3X2	INF. 3	4X3X2	INF. 3	INF. 3
No. of speeds		3	24X24	3	24X24	3	3
shuttle Type		Hydrostatic Drive	Synchro shuttle	Hydrostatic Drive	Synchro shuttle	Hydrostatic Drive	Hydrostatic Drive
Steering		Hydrostatic Power Steering	Hydrostatic Power Steering	Hydrostatic Power Steering	Hydrostatic Power Steering	Hydrostatic Power Steering	Hydrostatic Power Steering
Main Brake type		Wet Muti Disc	Wet Muti Disc	Wet Muti Disc	Wet Muti Disc	Wet Muti Disc	Wet Muti Disc
Parking Brake type		Wet Muti Disc	Wet Muti Disc	Wet Muti Disc	Wet Muti Disc	Wet Muti Disc	Wet Muti Disc
Main Clutch type		None	Dry type single stage	None	Dry type single stage	None	None
Mechanical differential lock		Rear Standard	Rear standard	Rear Standard	Rear standard	Rear Standard	Rear Standard
Front wheel drive system		Hydraulic Dog Clutch	Hydraulic Dog Clutch	Hydraulic Dog Clutch	Hydraulic Dog Clutch	Hydraulic Dog Clutch	Hydraulic Dog Clutch
TRAVELING SPEEDS							
Forward	km/h(mph)	0~30.14(0~18.73)	0.18~28.65(0.11~17.80)	0~30.14(0~18.73)	0.19~30.08(0.12~18.69)	0~31.64(0~19.66)	0~31.64(0~19.66)
Reverse	km/h(mph)	0~30.14(0~18.73)	0.16~25.46(0.10~15.82)	0~30.14(0~18.73)	0.17~26.73(0.11~16.61)	0~31.64(0~19.66)	0~31.64(0~19.66)

Specifications

Model		NX4520H	NX5010	NX5020H	NX5520	NX5520H	NX6020H
OTHER FEATURES							
Tilt steering		0	0	0	0	0	0
One-Touch Hood type		0	0	0	0	0	0
Flat Deck type (ISO-mounted w/rubber mat)		0	0	0	0	0	0
Panel type		ANALOG BULB/ GAUGE, LCD HOUR METER	ANALOG BULB/ GAUGE, LCD HOUR METER	←	DIGITAL LED/ STEPPING MOTOR, LCD HOUR METER	DIGITAL LED/ STEPPING MOTOR, LCD HOUR METER	←
DIMENSIONS							
Overall length (w/o front weight and w/o 3pt hitch)	mm(in.)	3249	3249	3249	3249	3249	3249
Overall length (w/o front weight and w/3pt hitch)	mm(in.)	3547	3547	3547	3547	3547	3547
Overall length (w/front weight and w/3pt hitch)	mm(in.)	3742	3742	3742	3742	3742	3742
Overall width (minimum tread)	mm(in.)	1665	1665	1665	1669	1669	1669
Tread width - Front	mm(in.)	1352	1352	1352	1355	1355	1355
Tread width - Rear	mm(in.)	1324	1324	1324	1334	1334	1334
Overall height (ROPS)	mm(in.)	2618	2618	2618	2628	2628	2628
Wheel base	mm(in.)	1920	1920	1920	1920	1920	1920
Ground(Crop) clearance	mm(in.)	350	376	350	400	400	400
Turning radius(w/brake)	mm(in.)	350	350	350	400	400	400
Turning radius(QT)	mm(in.)	3.39	3.39	3.39	3.69	3.69	3.69
Turning radius(QT+AB)	mm(in.)	2.99	2.99	2.99	3.04	3.04	3.04
Weight with ROPS	kg.f(lbs)	1840	1850	1845	1915	1910	1910
TIRE SIZE							
AG. Tire							
Front		9.5-16	9.5-16	9.5-16	9.5-18	9.5-18	9.5-18
Rear		13.6-26	13.6-26	13.6-26	13.6-28	13.6-28	13.6-28

*NOTE : Specifications and design are subject to change without notice

Standard Equipment

- Creep gear
- 4WD
- Joystick valve
- Rear PTO
- Horn
- AUTO PTO
- Draft Control
- Work Light
- Parking brake alarm

Optional Equipment

- Mid PTO
- Air suspension seat
- External hydraulic floating
- Function

RX6030 / 6630 / 7630- CABIN

Specifications

Model	RX6030C	RX6030PC	RX6630C	RX6630PC	RX7630C	RX7630PC
ENGINE						
Manufacturer	Daedong	Daedong	Daedong	Daedong	Daedong	Daedong
Model	4B243DTM-A	4B243DTP-A	4FT-TM2-A	4FT-TP2-A	4F243DIT	4F243DIT
Engine Gross Power	HP(kw)	60(44.7)	60(44.7)	66(49.2)	66(49.2)	76(56.7)
Rated revolution	rpm	2600	2600	2600	2600	2600
No. of cylinders		4	4	4	4	4
Total displacement	cc(cu in.)	2,435(148.6)	2,435(148.6)	2,435(148.6)	2,435(148.6)	2,435(148.6)
CAPACITY						
Fuel tank	ℓ (us gal)	95(25.1)	95(25.1)	95(25.1)	95(25.1)	95(25.1)
PTO						
Rated PTO Power/rpm	HP(kw)/rpm			57.6(43)	57.6(43)	65.5(49)
Maximum PTO Power	HP(kw)			57.6(43)	57.6(43)	65.5(49)
PTO Efficiency	%			87.3	87.3	86.3
PTO Efficiency(Gross power)	%			87.3	87.3	86.3
PTO Fuel Consumption	ℓ /h(gph)			14.6(11830)	14.6(11830)	15.6(12620)
Rear PTO Shaft	SAE 1-3/8, 6 Spline	SAE 1-3/8, 6 Spline	SAE 1-3/8, 6 Spline	SAE 1-3/8, 6 Spline	SAE 1-3/8, 6 Spline	SAE 1-3/8, 6 Spline
Type	Independent	Independent	Independent	Independent	Independent	Independent
Rated PTO rpm	rpm	540 / 540E	540 / 540E	540 / 540E	540 / 540E	540 / 540E
PTO rpm	rpm	574 / 785	574 / 785	574 / 785	574 / 785	574 / 785
@ Engine rated rpm	rpm	NA	NA	NA	NA	NA
Ground PTO		NA	NA	NA	NA	NA
HYDRAULIC						
3 Point Lift Control Type	Position, Draft, Mixed Control	Position, Draft, Mixed Control	Position, Draft, Mixed Control	Position, Draft, Mixed Control	Position, Draft, Mixed Control	Position, Draft, Mixed Control
Implement Pump	lpm(cc/rev)	41.6(16)	41.6(16)	41.6(16)	41.6(16)	41.6(16)
Power steering pump	lpm(cc/rev)	26(10)	26(10)	26(10)	26(10)	31.2(12)
Total hydraulic flow	lpm(cc/rev)	67.6(26)	67.6(26)	67.6(26)	67.6(26)	72.8(28)
3-point hitch type	Category II	Category II	Category II	Category II	Category II	Category II
Lower Link type	Cassette type	Cassette type	Cassette type	Cassette type	Cassette type	Cassette type
Check Link type	Stabilize	Stabilize	Stabilize	Stabilize	Stabilize	Stabilize
Top Link type	Turn-buckle	Turn-buckle	Turn-buckle	Turn-buckle	Turn-buckle	Turn-buckle
Lift rod type	Bevel Gear	Bevel Gear	Bevel Gear	Bevel Gear	Bevel Gear	Bevel Gear
Lift Capacity						
@ lift point	kg.f(lbs)	2075(4575)	2075(4575)	2075(4575)	2256(4974)	2256(4974)
@ 24 in.behind lift point	kg.f(lbs)	1630(3594)	1630(3594)	1630(3594)	1768(3898)	1768(3898)
Drawbar type	Drawbar(Clevis)	Drawbar(Clevis)	Drawbar(Clevis)	Drawbar(Clevis)	Drawbar(Clevis)	Drawbar(Clevis)
Max. Drawbar vertical load	kg.f(lbs)	750(1655)	750(1655)	750(1655)	900(1985)	900(1985)
Max. Trailer loading weight	kg.f(lbs)	4300(9480)	4300(9480)	4300(9480)	6500(14330)	6500(14330)
Towing Load	KN	12.67	12.67	14.41	14.41	14.74
Driving speed	Km/h	8.06	8.06	6.69	6.69	7.09
Towing Power	HP(KW)		38.54(28.35)	39.5(29.1)	39.5(29.1)	39.48(29.04)
No. of standard remote valve's ports (Rear)		4	4	4	4	4
DRIVE TRAIN						
Transmission	Synchro Shuttle Transmission	Power Shuttle Transmission	Synchro Shuttle Transmission	Power Shuttle Transmission	Synchro Shuttle Transmission	Power Shuttle Transmission
Main gear shift x range gear shift	4 X 6	4 X 6	4 X 6	4 X 6	4 X 6	4 X 6
No. of speeds	24 X 24	24 X 24	24 X 24	24 X 24	24 X 24	24 X 24
shuttle Type	Synchro Shuttle	Power Shuttle	Synchro Shuttle	Power Shuttle	Synchro Shuttle	Power Shuttle
Steering	Hydrostatic Power Steering	Hydrostatic Power Steering	Hydrostatic Power Steering	Hydrostatic Power Steering	Hydrostatic Power Steering	Hydrostatic Power Steering
Main Brake type	Wet Multi Disc	Wet Multi Disc	Wet Multi Disc	Wet Multi Disc	Wet Multi Disc	Wet Multi Disc
Parking Brake type	Wet Multi Disc	Wet Multi Disc	Wet Multi Disc	Wet Multi Disc	Wet Multi Disc	Wet Multi Disc
Main Clutch type	Dry Single Plate Clutch	Hydro Multi Wet Disc Clutch	Hydro Multi Wet Disc Clutch	Hydro Multi Wet Disc Clutch	Dry Single Plate Clutch	Hydro Multi Wet Disc Clutch
Main Clutch diameter	mm(in.)	278.4(10.96)	133.5(5.26)	278.4(10.96)	133.5(5.26)	278.4(10.96)
Mechanical differential lock	Rear Standard	Rear Standard	Rear Standard	Rear Standard	Rear Standard	Rear Standard
Front wheel drive system	Hydro Multi Wet Disc Clutch	Hydro Multi Wet Disc Clutch	Hydro Multi Wet Disc Clutch	Hydro Multi Wet Disc Clutch	Hydro Multi Wet Disc Clutch	Hydro Multi Wet Disc Clutch
Quick Turn drive system	NA	NA	NA	NA	NA	NA

Specifications

Model	RX6030C	RX6030PC	RX6630C	RX6630PC	RX7630C	RX7630PC
TRAVELING SPEEDS						
Forward	km/h(mph)	0.16~36.36(0.10~22.59)	0.16~36.36(0.10~22.59)	0.16~36.36(0.10~22.59)	0.16~36.36(0.10~22.59)	0.17~37.86(0.11~23.53)
Reverse	km/h(mph)	0.16~35.75(0.10~22.21)	0.16~35.75(0.10~22.21)	0.16~35.75(0.10~22.21)	0.16~35.75(0.10~22.21)	0.17~37.23(0.11~23.13)
OTHER FEATURES						
Tilt steering	degree	O (16)	O (16)	O (16)	O (16)	O (16)
One-Touch Hood type		O	O	O	O	O
Flat Deck type (ISO-mounted w/rubber mat)		O	O	O	O	O
DIMENSIONS						
Overall length (w/o front weight and w/o 3pt hitch)	mm(in.)	3410	3410	3410	3410	3480
Overall length (w/o front weight and w/3pt hitch)	mm(in.)	3685	3685	3685	3685	3715
Overall length (w/front weight and w/3pt hitch)	mm(in.)	3780	3780	3780	3780	3810
Overall width (minimum tread)	mm(in.)	4020	4020	4020	4020	4050
Tread width - Front	mm(in.)	1800	1800	1800	1800	1960
Tread width - Rear	mm(in.)	1465	1465	1465	1465	1475
Overall height (CAB)	mm(in.)	1415	1415	1415	1415	1515
Wheel base	mm(in.)	2630	2630	2630	2630	2655
Ground(Crop) clearance	mm(in.)	2100	2100	2100	2100	2130
Turning radius(w/brake)	mm(in.)	420	420	420	420	440
Turning radius(QT)	mm(in.)	3640	3640	3640	3640	Ag 3930
Turning radius(QT+AB)	mm(in.)	3110	3110	3110	3110	Ag 3370
Weight with ROPS	kg.f(lbs)	2630	2630	2630	2630	2795
TIRE SIZE						
AG. Tire						
Front		11.2-20	11.2-20	11.2-20	11.2-20	11.2-24
Rear		14.9-30	14.9-30	14.9-30	14.9-30	16.9-30

*NOTE : Specifications and design are subject to change without notice

Standard Equipment

- Creep gear
- 4WD
- Auto 4WD
- Rear PTO
- Rear View Mirror
- Parking Brake
- Cup Holder
- AUTO PTO
- Draft Control
- Joystick valve
- Horn
- 7 Pin Socket
- Power Socket
- Horn
- Rear Work Light
- Air Conditioner
- Heater
- Radio Cassette Player/CDP
- Sunvisor
- PTO Cover

Optional Equipment

- Front Weight
- Rear Weight
- 3 Pin Socket
- Rear Window Wiper
- Fuel Tank Cap Locking
- Room mirror

RX6030/6630/7630 - ROPS

Specifications

Model		RX6030	RX6630	RX7630
ENGINE				
Manufacturer		Daedong	Daedong	Daedong
Model		4B243DTM-A	4FT-TM2-A	4FT-TM2-A
Engine Gross Power	HP(kw)	60(44.7)	66(49.2)	76(56.7)
Rated revolution	rpm		2600	2600
No.of cylinders		4	4	4
Total displacement	cc(cu in.)	2,435(148.6)	2,435(148.6)	2,435(148.6)
Turbo Charge		Turbo charged	Turbo charged	Turbo charged
CAPACITY				
Fuel tank	ℓ (us gal)	85(22.45)	85(22.45)	85(22.45)
PTO				
Rated PTO Power/rpm	HP(kw)/rpm	53.8	57.6(43)	65.5(49)
PTO Efficiency	%	89.7	87.3	86.3
PTO Efficiency(Gross power)	%	89.7	87.3	86.3
Rear PTO Shaft		SAE 1-3/8, 6 Spline	SAE 1-3/8, 6 Spline	SAE 1-3/8, 6 Spline
Type		Independent	Independent	Independent
Rated PTO rpm	rpm	540 / 540E / 1,000	540 / 540E / 1,000	540 / 540E / 1,000
PTO rpm @Engine rated rpm	rpm	574 / 785 / 1,043	574 / 785 / 1,043	574 / 785 / 1,043
Ground PTO	rpm	NA	NA	NA
Mid PTO		NA	NA	NA
HYDRAULIC				
3 Point Lift Control Type		Position, Draft, Mixed Control	Position, Draft, Mixed Control	Position, Draft, Mixed Control
3-point hitch type		Category II	Category II	Category II
@ lift point	kg.f(lbs)	2075(4575)	2075(4575)	2256(4974)
@24 in.behind lift point	kg.f(lbs)	1630(3594)	1630(3594)	1768(3898)
Drawbar type		Drawbar(Clevis)	Drawbar(Clevis)	Drawbar(Clevis)
Max. Drawbar vertical load	kg.f(lbs)	750(1655)	750(1655)	900(1985)
Max. Trailer loading weight	kg.f(lbs)	4300(9480)	4300(9480)	6500(14330)
Towing Load	KN	12.67	14.41	14.74
Driving speed	Km/h	8.06	6.69	7.09
No.of standard remote valve's ports (Rear)		4	4	4
DRIVE TRAIN				
Transmission		Synchro Shuttle Transmission	Synchro Shuttle Transmission	Synchro Shuttle Transmission
Main gear shift x range gear shift		4 X 6	4 X 6	4 X 6
No. of speeds		24 X 24	24 X 24	24 X 24
shuttle Type		Synchro Shuttle	Synchro Shuttle	Synchro Shuttle
Steering		Hydrostatic Power Steering	Hydrostatic Power Steering	Hydrostatic Power Steering
Main Brake type		Wet Multi Disc	Wet Multi Disc	Wet Multi Disc
Parking Brake type		Wet Multi Disc	Wet Multi Disc	Wet Multi Disc
Main Clutch type		Dry Single Plate Clutch	Hydro Multi Wet Disc Clutch	Dry Single Plate Clutch
Main Clutch diameter	mm(in.)	278.4(10.96)	278.4(10.96)	278.4(10.96)
Mechanical differential lock		Rear Standard	Rear Standard	Rear Standard
Front wheel drive system		Hydro Multi Wet Disc Clutch	Hydro Multi Wet Disc Clutch	Hydro Multi Wet Disc Clutch
TRAVELING SPEEDS				
Forward	km/h(mph)	0.16~36.36(0.10~22.59)	0.16~36.36(0.10~22.59)	0.17~37.86(0.11~23.53)
Reverse	km/h(mph)	0.16~35.75(0.10~22.21)	0.16~35.75(0.10~22.21)	0.17~37.23(0.11~23.13)

Specifications

Model		RX6030	RX6630	RX7630
OTHER FEATURES				
Tilt steering	degree	0 (16)	0 (16)	0 (16)
One-Touch Hood type		0	0	0
Flat Deck type (ISO-mounted w/rubber mat)		0	0	0
DIMENSIONS				
Overall length (w/o front weight and w/o 3pt hitch)	mm(in.)	3410	3410	3480
Overall length (w/o front weight and w/3pt hitch)	mm(in.)	3685	3685	3715
Overall length (w/weight support and w/3pt hitch)	mm(in.)	3780	3780	3810
Overall length (w/front weight and w/3pt hitch)	mm(in.)	4020	4020	4050
Overall width (minimum tread)	mm(in.)	1800	1800	1960
Tread width - Front	mm(in.)	1465	1465	1475
Tread width - Rear	mm(in.)	1415	1415	1515
Overall height (ROPS)	mm(in.)	2700	2700	2730
Overall height (CAB)	mm(in.)	NA	NA	NA
Wheel base	mm(in.)	2100	2100	2130
Ground(Crop) clearance	mm(in.)	420	420	440
Turning radius(w/o brake)	mm(in.)	3640	3640	Ag 3930
Turning radius(w/brake)	mm(in.)	3110	3110	Ag 3370
Weight with ROPS	kg.f(lbs)	2360	2360	2535
TIRE SIZE				
AG. Tire				
Front		11.2-20	11.2-20	11.2-24
Rear		14.9-30	14.9-30	16.9-30

*NOTE : Specifications and design are subject to change without notice

Standard Equipment

- Horn

Optional Equipment

- Front weight
- Rear Weight
- Joystick valve
- 3 Pin Socket
- Power Socket
- Sun Canopy
- Fuel Tank Cap Locking
- Room mirror (RX6620-H)

PX9020/1020C

Specifications

Model	PX9020	PX1002C
Country of origin	South Korea	South Korea
ENGINE		
Make	Perkins	Perkins
Model	1104C-44TT	1104C-44TT
Type	4Cyl., In-line Vertical, Water-cooled, Turbo Charge Diesel Engine	4Cyl., In-line Vertical, Water-cooled, Turbo Charge Diesel Engine
Engine Gross Power	HP(kw)	89.2(66.5)
No. Of Cylinders	4	4
Displacement	cc(cu in.)	4399(269)
Rated Revolution	rpm	2200
PTO	HP(kw)/rpm	72.7(54.2) 540/1000 (Independent)
Fuel tank Capacity	ℓ (us gal)	120(31.7)
DRIVE TRAIN		
Speeds	16x16	16x16
Differential Lock	Rear Standard	Rear Standard
Shuttle Type	Synchromesh	Synchromesh
Steering	Power Steering	Power Steering
Main Clutch type	Dry Single Plate - Single Stage Type	Dry Single Plate - Single Stage Type
Brake	Wet Disc Type	Wet Disc Type
Front Wheel Drive System	4WD - Hydraulic	4WD - Hydraulic
HYDRAULIC SYSTEM		
3 Point Lift Control Type	Position, Draft, Mixed Control	Position, Draft, Mixed Control
Pump Capacity	lpm(cc/rev)	48.4(22)
Power Steering Pump	lpm(cc/rev)	30.8(14)
Total Hydraulic Flow	lpm(cc/rev)	79.2(36)
3-Point Hitch Type	Category II	Category II
Lift Capacity At Lift Point	kg.f(lbs)	2400(5291)
Drawbar Type	Drawbar	Drawbar
No. Of Standard Remote Valves	2	2
TIRE SIZE		
AG Tire		
Front	2.4-24, 8PR	12.4-24, 8PR
Rear	18.4-30, 8PR	18.4-30, 8PR
TRAVELING SPEEDS		
Forward	km/h(mph)	0.77~34.62(0.40~21.51)
Reverse	km/h(mph)	0.75~35.04(0.47~21.77)
OTHERS		
Tilt Steering	Std	Std
One-Touch Hood Type	Std	Std
Panel Type	Electric	Electric
DIMENSIONS		
Overall length (w/o front weight and w/o 3pt hitch)	mm(in)	3935(154.9)
Overall length (w/o front weight and w/3pt hitch)	mm(in)	4120(162.2)
Overall length (w/front weight and w/3pt hitch)	mm(in)	4535(178.5)
Overall width (minimum tread)	mm(in)	2000(78.7)
Tread width - Front	mm(in)	1510(59.5)
Tread width - Rear	mm(in)	1535(60.4)
Overall height(ROPS)	mm(in)	2950(116.0)
Wheel base	mm(in)	2305(90.7)
Ground Clearance	mm(in)	475(18.7)
Turning Radius(W/O Brake)	mm(in)	4400(173.2)
Turning Radius(W/Brake)	mm(in)	3900(153.5)
Weight with ROPS	kg.f(lbs)	3500(7716.2)

*NOTE : Specifications and design are subject to change without notice

Standard Equipment

- 4WD
- Rear weights 2pcs x 46kg (92kg)
- Joystic Valve (PX9020 Option)
- 7 Pin Socket
- PTO Cover
- Auto 4WD
- Rear Remote Hydraulic Valve (2pcs)
- Parking Breake
- Rear Work Light
- Support for Front weights (PX1002C Option)
- Rear PTO
- Draft Control
- Battery
- Signal Lamp
- AUTO PTO
- Rear View Mirror
- Horn
- Fuel Tank Cab

Optional Equipment

- Front weights (PX9020 Standard)
- Sun canopy
- Additional hyd. Lift Cylinder

UTV

Specifications

Model	MECHRON2200	MECHRON2210	MECHRON2230	MECHRON2240
ENGINE				
Model	3C100LWU	3C100LWU	3C100LWU	3C100LFU-U
	3Cyl., In-line Vertical, Water-cooled 4-cycle diesel engine	3Cyl., In-line Vertical, Water-cooled 4-cycle diesel engine	3Cyl., In-line Vertical, Water-cooled 4-cycle diesel engine	3Cyl., In-line Vertical, Water-cooled 4-cycle diesel engine
Engine gross	HP(KW)	22(16.4)	22(16.4)	22(16.4)
Displacement	cu.in.(cc)	61.45(1,007)	61.45(1,007)	61.45(1,007)
Rated revolution	rpm	2800 (6.74kgf-m at 1,900rpm)	2800 (6.74kgf-m at 1,900rpm)	2800 (6.74kgf-m at 1,900rpm)
Fuel tank capacity	u.s.gal(ℓ)	7.4(28)	7.4(28)	7.4(28)
DRIVE TRAIN				
Type	Belt CVT	Belt CVT	Belt CVT	Belt CVT
Gear Range	Low,High, Netural, Reverse	Low,High, Netural, Reverse	Low,High, Netural, Reverse	Low,High, Netural, Reverse
Ground Speed (km/h)	mph(km/h)	0-25(0-40)	0-25(0-40)	0-25(0-40)
Brake	Front/ Rear Hyd Dry Caliper Disc	Front/ Rear Hyd Dry Caliper Disc	Front/ Rear Hyd Dry Caliper Disc	Front/ Rear Hyd Dry Caliper Disc
SUSPENSION				
Front Suspension	Independent, MacPherson Strut type	Independent, MacPherson Strut type	Independent, MacPherson Strut type	Independent, MacPherson Strut type
Rear Suspension	Independent, Double A-Arm(Wishbone type)	Independent, Double A-Arm(Wishbone type)	Independent, Double A-Arm(Wishbone type)	Independent, Double A-Arm(Wishbone type)
STEERING				
Type	Rack & Pinion /Hydraulic Power Steering	Hydraulic Power Steering	Hydraulic Power Steering	Hydraulic Power Steering
DIMENSIONS				
Length	in.(mm)	114.4(2,905)	114.4(2,905)	126.2(3,205)
Width	in.(mm)	60.7(1,543)	75.3(1,913)	60.7(1,543)
Height	in.(mm)	76.4(1,940)	80.0(2,032)	76.4(1,940)
Max Wheel Tread	Front	in.(mm)	49.7(1,262)	49.7(1,262)
	Rear	in.(mm)	48.3(1,228)	48.3(1,228)
Wheelbase	in.(mm)	76.4(1,940)	76.4(1,940)	88.2(2,240)
Weight	lbs.(kg)	1,865(846)-W/O weight	1,848(825)	1,944(882)
Ground clearance	in.(mm)	12(304)	12(304)	12(304)
Towing Capacity	lbs.(kg)	1,300(590)	1,300(590)	1,300(590)
Payload Capacity	lbs.(kg)	1,598(725)	1,598(725)	1,325(600)
Turning Radius	ft.(m)	13.1(4.0)	13.1(4.0)	13.1(4.0)
CARGO BED				
LengthxWidthxDepth	in.(mm)	38.6(980)x56.2(1,427) x11.5(293)	38.6(980)x56.2(1,427) x11.5(293)	50.4(1,280)x56.2(1,427) x11.5(293)
Cargo Capacity	lbs.(kg)	1,102(500)	1,102(500)	1,102(500)
TIRE SIZE				
Front	HDWS	25x10-12	25x10-12	25x10-12
	Turf	25x10-12	25x10-12	25x10-12
Rear	ATV	25x10-12	25x10-12	25x10-12
	HDWS	25x10-12	25x10-12	25x10-12
Rear	Turf	25x10-12	25x10-12	25x10-12
	ATV	25x10-12	25x10-12	25x10-12
Seat Capacity		1 SLIDE SEAT BUCKET, 2 Seat Bench	1 SUS SEAT BUCKET, 2 Seat Bench	1 SUS SEAT BUCKET, 2 Seat Bench
Dump Box Actuation		Manual	Manual	Manual

Specifications

Model	MECHRON2200	MECHRON2210	MECHRON2230	MECHRON2240
ENGINE				
Wind Shield(Safety Glass With Wiper)	Std.	Opt.	Std.	Opt.
Front Guard	Std.	Std.	Std.	Std.
Body Color	Orange	Orange/Green	Orange	Orange/Green/Blue(1600XD4)
Hydraulic Bed Lift	Std.	Opt.	Std.	Opt.
Hydraulic Utility Valve	Std.	Opt.	Std.	Opt.
Beacon Light	Opt.	Opt./Std.(XS1000-EU)	Opt.	Opt.
Speedometer	Std.	Std.	Std.	Std.
Winch MTG Brkt	Opt.	Opt.	Opt.	Opt.
Sun Canopy	Plastic	Opt./Std.(XS1000-EU)	Std.	Opt.
Wind Shield	Plastic	Opt.	Opt.	Opt.
Wind Shield	PC coating	Opt.	Opt.	Opt.
Wind Shield	Safety Glass	Std.	Opt.	Opt.
Wind Shield(EEC)	Safety Glass	X	Opt./Std.(XS1000-EU)	X
Wiper Kit	Std.	Opt./Std.(XS1000-EU)	Std.	Opt.
Wiper Kit(EEC)	Std.	Opt./Std.(XS1000-EU)	Std.	Opt.
2-inch Front Hitch Receiver	Opt.	Opt.	Opt.	Opt.
2-inch Front Hitch Receiver(EEC)	Opt.	Std.	Opt.	Opt.
Swing-Drawbar Kit(EEC)	Opt.	Std.	Opt.	Opt.
Hand Throttle	Opt.	Opt.	Opt.	Opt.
Oil-Cooler Kit	Opt.	Opt.	Opt.	Opt.
Sprayer Kit	Opt.	Opt.	Opt.	Opt.
Skid Plate	Std.	Opt./Std.(XS1000-EU)	Std.	Opt.
Rear Screen	Std.	X	Std.	Opt.
Rear Screen(EEC)	X	Opt.	X	X
Suspension(CV Joint) Dust Guard	Opt.	Opt.	Opt.	Opt.
Safety Light Kit (Tail Light, Brake Light, Turn Signal, Hazard Switch, Horn)	Std.	Std.	Std.	Opt./Std(1600XD4)
Horn	Opt.	Opt.	Opt.	Opt.
Fog Light(two)	Opt.	Opt.	Opt.	Opt.
Headrest(two)	Std.	Std.	Std.	Opt.(Four)
Rear View Mirror Kit(two)	Std.	Opt.	Std.	Opt.
Rear View Mirror Kit(two,EEC)	Opt.	Std.	Opt.	Opt.
License Plate	Opt.	Std.	Opt.	Opt.
Working Lamp Kit(ROPS)	Opt.	Opt.	Opt.	Opt.
Deck Extension Kit(Cargo)	Opt.	Opt.	Opt.	Opt.
Parking Brake Buzzer Kit(Safety)	Opt.	Opt./Std.(XS1000-EU)	Opt.	Opt./Std(1600XD4)
Soft Cabin Kit(Four, OEM-One)	Opt.	Opt.	Opt.	Opt.
Beacon Light Kit	Opt.	Opt.	Opt.	Opt.
Alarm, SYS Back-Up Kit	Opt.	Opt.	Opt.	Opt./Std(1600XD4)
High-Mount Brake Lamp Kit	Opt.	Opt.	Opt.	Opt.
Gas Spring Kit	Opt.	Std.	Opt.	Std.

Specifications

Model	MECHRON250(GASOLINE)
ENGINE	
Engine Type	Water Cooling, 4 Stroke
Cylinders	1 Cylinder
Max. Power/RPM	16.1hp @ 5500rpm
Displacement	229cc
Rated RPM	5500rpm
Fuel System	EFI
Idle RPM	1500rpm
FUEL SYSTEM	
Capacity	13.5L
Fuel Pump Pressure	Delphi, 105l/h, 0.3Mpa
DRIVE TRAIN	
Type	CVT
Gear Range	L/H/N/R
Max speed	60km/h
Engine Brake Function	N/A
Wheel Drive	Rear 2WD
SUSPENSION	
Front	Independent, Dual A-arm type
Rear	Integral, rear driving axle type
STEERING	
Standard	Rack & Pinion
Option(EPS)	N/A
CARGO BOX	
Dimension(L*W*H)	605*846*208
Capacity	80kg
TIRES	
Front	22*7-10 6PR
Rear	22*10-10 6PR
TIRES	
Type	Hyd.Dry Caliper Disc
Caliper Effective Area	Front Rear
	1,198mm ² 1,108mm ²
DIMENSION	
Length	2450mm
Width	1300mm
Height	1660mm
Ground Clearance	180mm
Wheel Thread	Front Rear
	973mm 975mm
Wheel Base	1780mm
Curb Weight	298kg
Payload Capacity	226kg
Turning Radius	7000mm
OTHERS	
Seat Capacity	2 persons
Turning Lights	Std.
Horn	Std.
Bumper	Std.
ROPS	Std.
Gas Shock Absorber	Std.
ROPS	Std.
Cargo Box Actuation	Manual(Lever)
Battery Capacity	12V 8Ah
Instrument Panel	Digital
Aluminum Wheel	Std.
Seat Type	Bench Seat
Sound level, operator ear	85db

UTV

Specifications

Model	MECHRON500(GASOLINE)	
ENGINE		
Engine Type	Water Cooling, 4 Stroke	
Cylinders	1 Cylinder	
Max. Power/RPM	22.8hp @ 5000rpm	
Displacement	471cc	
Rated RPM	5000rpm	
Idle RPM	1500rpm	
Fuel System	EFI	
FUEL SYSTEM		
Capacity	28L	
Fuel Pump Pressure	Delphi, 105l/h, 0.3Mpa	
DRIVE TRAIN		
Type	CVT	
Gear Range	L/H/N/R	
Speed Range	0-65 km/h	
Engine Brake Function	○	
Differential Lock	Electirc control, Switch	
Wheel Drive	Rear 2/4WD	
SUSPENSION		
Front	Independent, Dual A-arm type	
Rear	Independent, Dual A-arm type	
STEERING		
Standard	Rack & Pinion	
Option	EPS	
CARGO BOX		
Dimension(L*W*H)	900*1170*280	
Capacity	200kg	
TIRES		
Front	26*9-14 6PR	
Rear	26*11-14 6PR	
BRAKING		
Type	Hyd.Dry Caliper Disc	
Caliper Effective Area	Front	2,022mm ²
	Rear	1,412mm ²
DIMENSION		
Length	2980mm	
Width	1550mm	
Height	1950mm	
Ground Clearance	310mm	
Wheel Thread	Front	1300mm
	Rear	1285mm
Wheel Base	1950mm	
Curb Weight	590kg	
Towing Capacity	544kg	
Payload Capacity	400kg	
Turning Radius	8600mm	
OTHERS		
Seat Capacity	2 persons	
Side Door	Std.(2EA)	
Head Rest	Std.(2EA)	
Handle Tilting	Std.	
Side Mirror	Std.	
Turning Lights	Std.	
Horn	Std.	
Bumper	Std.	
ROPS	Std.	
Gas Shock Absorber	Std.	
Cargo Box Actuation	Manual(Lever)	
Battery Capacity	12V 30Ah	
Instrument Panel	Digital	
Aluminum Wheel	14in	Std.
Console Box	N/A	
Seat Type	Bucket or Bench Seat	
Color	Red Orange	
Sound level, operator ear	86.5dB	

COMBINE

Specifications

Model	DSC62	
DIMENSION		
Length	(mm)	4,300
Width	(mm)	1,830
Height	(mm)	2,360
Weight	(kg)	2,335
ENGINE		
Model	4B243DITC-CH	
Type	Vertical 4cycle 4cylinder water cooled diesel Engine	
Total displacement	(cc)	2,435
Power/Speed	HP/rpm	62HP/2700RPM
Fuel	Diesel	
Fuel tank capacity	ℓ	65
TRAVELLING		
Center distance of crawler	(mm)	1,000
Crawler width x grounded length	(mm)	400x1350
Average pressure of ground contact	(kgf/cm ²)	0.216
Minimum ground clearance	(mm)	175
Speed changing type	HST(Hydrostatic transmission)	
Tyavelling speed(m/sec)	Forward	Lodging rice : 0~1.0, Standing rice : 0~1.5
	Reverse	Transporting : 0~1.9
REAPING		
Reaping width	(mm)	1,450
Number of rows	(rows)	4
Width of reaping knife	(mm)	1,436
Fallen crop adaptability	(Degree)	Forward reaping : under 85
		Reverse reaping : under 70
Speed change(shifts)	2(synchronized with traveling sub-shift) + 3(pick-up)	
THRESHING		
Threshing system	Head feeding, single drum, axial flow system	
Threshing cylinder	DiameterxWidth (mm)	424x900
	Speed (rpm)	503
Treating cylinder of NO.2	DiameterxWidth (mm)	178x712
	Revolution (rpm)	985
Selection type	Shaking, Blowing, Suction	
Sieve case widthxlength	(mm)	665x1550
GRAIN UNLOADING PART		
Threshed grain outlet type	Hopper with 3 outlets	
capacity of hopper	ℓ (bag)	200(about4)
STRAW EJECTION PARTS		
Cutter(length of cutting : 50mm)	◎	
ADDITIONAL EQUIPMENT		
Auto engine stop		
Auto threshing depth control	◎	
Loading signal		
Working efficiency	(min/10a)	12~17

*This specifications can be changed to improve the quality of the machine without notice.

COMBINE

Specifications

Model	DSM72		
DIMENSION			
Overall length	(mm)	4445	
Overall width	(mm)	1910	
Overall height	(mm)	2635	
Weight	(kg)	3130	
ENGINE			
Model	E4DE-T		
Type	Water-cooled,4-cylinder,direct injection turbo		
Total displacement	(cc)	2955	
Power/Revolutions	(ps/rpm)	72/2700	
Fuel tank capacity	(ℓ)	67	
DRIVING SYSTEM			
Crawler	center distance	(mm)	1030
	width×ground contact	(mm)	450×1580
	contact pressure	(kgf/cm ²)	0.22
Transmission type	HST(SERVO control)		
Range	3 stage		
Standard operating speed	(%)	1.62	
The type of turn	BRKE-SOFT-SPIN Turn		
REAPING UNIT			
Number of reaped crops	4		
Reaping interval	(mm)	1450~1500	
Width of reaping cutting blade	(mm)	1450	
Type of reaping cutting blade	Two blades sliding cutting		
Type of speed	Speed-synchronized + Elevator (3steps)		
THRESHING UNIT			
Threshing type	Half feeding, single trash drum		
Threshing cylinder	diameter×width	(mm)	424×900
	revolution speed	(rpm)	505
Processing cylinder(1)	diameter×width	(mm)	140×725
Processing cylinder(2)	diameter×width	(mm)	140×100
Sieve case(Width×diameter)	(mm)	665×1550	
GRAIN DISCHARGING SYSTEM			
Tank capacity	(ℓ)	1400(approx. 28bags)	
Turning radius(degrees)-turning type	270-electric moter		
STRAW DISCHARGING PROCESSING SYSTEM			
Factory specification	Straw discharging separation/collection system (shooter type)		
THE OTHER DEVICES			
Micom	○		
Grain leveling guage	○		
Load indication	○		
Intensive lubrication	○		
Automatic devices	Automatic reaping height control	○	
	Automatic threshing depth control	○	
	Automatic horizontal control of body	○	
	Automatic turn control of unloader	○	
	Automatic engine stop function	○	
	Engine forward/reverse direction fan control	x	
Automatic devices	Automatic reaping clutch	○	
	Remote controler of unloader	○	
Fully open threshing cylinder	○		
Sieve case slide	○		
Elevator divider	optional		
Multi-cutter	optional		
Operating capacity	(minite/10a)	11~16	

RICE TRANSPLANTER

Specifications

Model	ERP60(DIESEL)	ERP60(GASOLINE)
DIMENSIONS		
Length x width x height	(mm)	3300x2200x2340
Wheelbase / Tread(Forward/Reverse)	(mm)	1025/1200/1200
Ground clearance	(mm)	430
Weight	(kg)	750
ENGINE		
Designation	3C100	FD620D(KAWASAKI)
Type	Water cooling 3cylinder DIESEL	Water cooling 2cylinder OHV GASOLINE
Output /revolution (max.)	(kW/rpm)	20/2800 (22)
Total displacement	(cc)	1007
Fuel consumption	(g/psh)	205
Fuel tank	(ℓ)	40
TRVELLING SYSTEM		
Change of speed gear	Forward:2 , Reverse:1	Forward:2 , Reverse:1
Working speed	(%)	0~1.7
WORK CAPACITY		
Work capacity	(min/10a)	9 min~
INSTRUMENT PANEL		
Type	LCD	LCD
AUTOMATION		
Turning rise	○	○
Reverse rise	○	○
Moniter self-diagnosis	○	○
Alarm	○	○
ETC		
Sun canopy	○	○
Maka lamp	○	○

*NOTE : The specifications are subject to change for the purpose of improvement without any notice.

POWER TILLER

Specifications

Model	DT100N	
LxWxH	(cm)	239x95x147
ENGINE		
Model	DT100N	
Type	Horizontal water-cooled 4-cycle single cylinder diesel engine	
Combustion chamber	Direct injection	
Displacement	(cc)	673
Rated output	(ps/rpm)	10
Maximum output	(ps/rpm)	13
Fuel	Diesel	
Fuel tank capacity	(ℓ)	11
Engine oil capacity	(ℓ)	2.8
Weight	(engine included, kgf)	383
Weight	(engine & rotary included, kgf)	469
Rotary driveshaft type	Side drive	
Main clutch type	Disc friction (dry type multiple clutch disc)	
Steering clutch	Hook-shaped side clutch (dog clutch)	
Brake type	Internal extension (wet type)	

*DT100N : Electric Starter

Specifications

Model	Transmission	Gearshift position		Speed (km/h)	Rotary rotation		Usage
		Main shift gear	Hi-lo shift gear		At Thick	At Fine	
DT100N	1st	1	Low	1.3	187(254)	275(374)	Rotary,ridging
	2nd	2	Low	1.9	187(254)	275(374)	Rotary, raking
	3rd	3	Low	2.9	187(254)	275(374)	Plowling,breaking soil
	4th	1	High	4.5	-	-	Breaking soil, raking
	5th	2	High	6.6	-	-	Trailer, transport
	6th	3	High	10.4	-	-	Trailer, transport
	1st reverse	R	Low	1.1	-	-	-
	2nd reverse	R	High	4.0	-	-	-

The above figures are at common RPMs in standard physics 6.00-12 rubber tires

**"At Thick" and "At Fine" are when the rotary driveshaft (Hi-Lo shift gear) is positioned at either "At Thick" or "At Fine." The numbers in parentheses refer to sprocket replacement.

* Specifications subject to change without prior notice.