

DIECI



AGRI STAR



AGRI STAR

ALL AS STANDARD: superb handling, precision movement control, maximum power, total comfort, eco-friendly.

Agri Star combines tradition and technology to meet all the needs of the farmer.

The new more powerful and environmentally-friendly engines with full electronic control, combined with the new 2-speed hydrostatic transmission allow a **drastic reduction in fuel consumption of up to 20%**.



GREEN CORE

AGRI STAR

COMFORT

EVOLUTION

HI - TECHNOLOGY



CLASSIC RANGE

7 - 10 m
BOOM HEIGHT

3800 - 4000 Kg
LOAD CAPACITY

EVO2

112 hp
TURBO AFTERCOOLER





Agri Star **40.7 EVO2**

112 hp
7.20 m
4000 kg



Agri Star **38.8 EVO2**

112 hp
7.60 m
3800 kg



Agri Star **38.10 EVO2**

112 hp
9.60 m
3800 kg



EVO2 HYDROSTATIC TRANSMISSION

Single-speed, from 0 to 40 km/h it always provides the maximum towing capacity available.

Built using the very latest components and supported by powerful propulsion units, it facilitates manoeuvring with fluid and precise movements.

NEW ENGINES WITH DPF

With a **maximum power of 112 hp**, **fuel consumption reduced by more than 20%** and full electronic control, the new engines meet the tough **Stage 3B/Tier 4i** standards.

DESIGN

Always a priority on Dieci machines but never just an end in itself, every restyling significantly improves soundproofing and ventilation of the engine compartment as well as aesthetic appeal.

EVOLUTION

40 Km/h
FOR RAPID TRANSFERS

**SPECIAL
AGRICULTURAL
BOOM**

EASY DUMPING

TOWING CAPACITY 20 TONNES





SPEED

40 km/h (limited by regulations) with high tractive power. Rapid acceleration and manoeuvring in total safety.

AGILITY

The new-generation EVO2 hydrostatic transmission allows easy, precise manoeuvring. The electronic throttle and inching pedal allow the vehicle to be driven at slow, controlled speeds, even with the boom at maximum speed.

MAXIMUM PERFORMANCE

The perfect balance between the highly-reliable speed and temperature control systems makes for exceptional performance when **towing** and working with a bucket.

EASY DUMPING

The ingenious **slewing** system is specially designed to increase the operating arc, which is particularly useful when dumping with the boom raised.

CHAIN SYSTEM

Amazing performance with the chain extension system, for increased strength and enhanced visibility.

Stage 3B/Tier 4i ENGINES with DPF

The engine is equipped with a Diesel Particulate Filter (DPF) to reduce harmful exhaust emissions. Intuitive filter regeneration management, with both manual and automatic functions.



COMFORT

ROPS-FOPS

360°
VISIBILITY

ON-BOARD
COMPUTER

A/C





Absolute comfort

It's the first thing you notice on board an Agri Star. The intelligently designed control layout makes the machine simple, intuitive and comfortable to use.

Unparalleled technology with the new **on-board computer**.

The display shows clearly and in real time all the information necessary to operate the vehicle.

The **semi-automatic air conditioning** system with 7 outlet vents allows perfect air circulation inside the cabin. The openable roof hatch and rear window, standard on all models, allowing improved ventilation while working.



With the **widest** cab door on the market, accessing the driving position is easy and safe.

Inside the cab everything has been designed in order to make work easier for the operator.

Soundproofing, **adjustable steering wheel** in both height and reach, **electric windows**, storage compartments and a range of accessories including **air conditioning**, radio, sunblind and ergonomic seat with pneumatic suspension ensure total operator comfort.

The windscreen wiper also cleans the glass at the top of the cab.

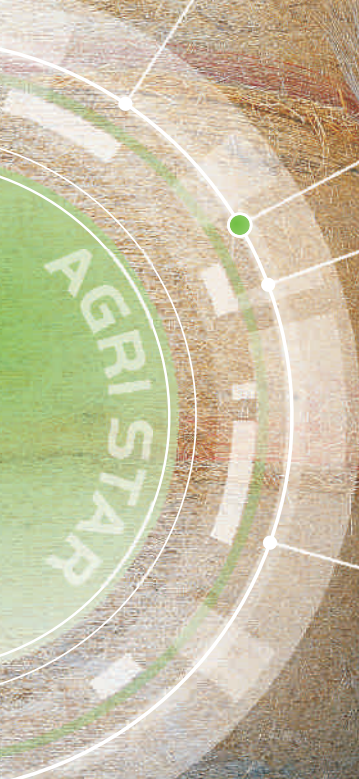
The fully glazed cab allows an unparalleled **360°** visibility.



HANDLING

AGILITY

NEW
JOYSTICK



INCHING PEDAL





ALL THE CONTROLS IN ONE HAND WITH ABSOLUTE PRECISION.

The 4-in-one joystick, standard equipment on all models, provides integrated control of the vehicle. The integral travel direction control allows rapid shuttling between forward and reverse.

The compensated flow sharing control valve allows simultaneous operation of all movements.

The **Joystick** with **capacitive hand sensing** and the operator sensor in the driver's seat prevent the risk of accidental operation of the controls.



AGILITY

The high-efficiency steering system ensures that even under high load conditions the **steering** always feels **light and responsive**.

Manoeuvrability remains the chief characteristic of this compact telehandler, which boasts the **tightest turning circle in its class**.

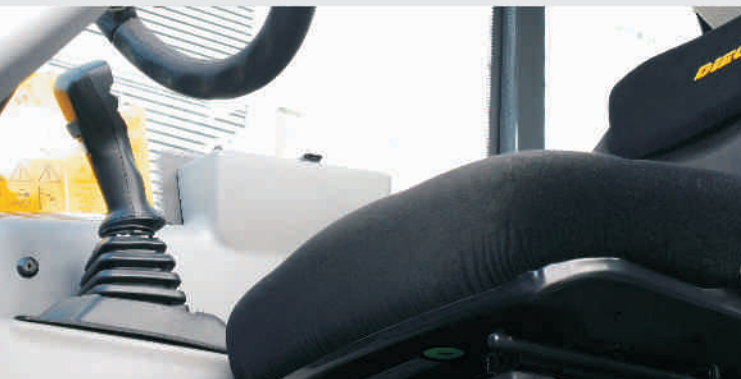
INCHING PEDAL

An essential control when the forward speed must be reduced or stopped, and maximum hydraulic power is required for the equipment in use.

The **servo-assisted service brake** furthermore ensures safe and modulated braking, reducing stress on the pedal.

EASY RIDE

Developed by Dieci design engineers, the sophisticated air suspension system installed on the boom (optional) drastically reduces oscillation when travelling over rough terrain.



GREEN CORE

- 20%
FUEL
CONSUMPTION

TFT DISPLAY
USER INTERFACE

STAGE 3B / Tier 4i

DPF

(DIESEL PARTICULATE FILTER)





ON-BOARD COMPUTER

Advanced instrumentation with a large color **display** and **intuitive icon-based interface** provides comprehensive and detailed information.

All machine functions are controlled with the **CANBUS system** that provides an improved response in rapid time.

Constant monitoring of operating conditions and in-depth diagnostics using real-time data.

Exceptional performance from the new **KUBOTA** engines with full electronic control and power output of **112 hp**, in full compliance with **STAGE 3B/Tier 4i** emission regulations.

Electronic engine management ensures a dramatic reduction in **CO** and **CO₂ emissions** as well **NO_x**.

REVERSIBLE FAN

Every radiator can be equipped with a hydraulic reversible fan which allows significant fuel savings and makes cleaning in dusty and dirty environments much easier and quicker.

DIECI FOR THE ENVIRONMENT

A leap forward into a cleaner, more sustainable future.

Dieci has chosen **ECOLOGICAL ENGINES** with full electronic control of fuel injection, turbo pressure, torque, engine rpm, engine brake, starter safety release, monitoring, diagnostics and **DPF system with automatic regeneration** for the treatment of exhaust emissions.

Enhanced performance, lower fuel consumption, reduced engine oil contamination and longer intervals between services.



TECHNOLOGY

QUICK DEP

ROPS-FOPS

170 l/i'

TRANSVERSE
LEVELING

MOMENT
LIMITER

COMPENSATION CYLINDER





The **transverse leveling** device (optional) for inclination angles of up to $\pm 8^\circ$, means you can work in total peace of mind, even on rough ground.

The **compensation cylinder (PATENTED BY DIECI)**, located inside the lifting ram, ensures that the load on the boom is balanced at all times, thereby improving durability.

QUICK DEP

System for depressuring the hydraulic service couplers: makes the connection of implements easy and effortless.

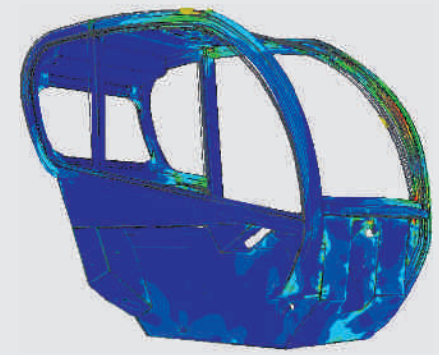


MOMENT LIMITER

Every Dieci machine is equipped with a control device that analyzes vehicle stability in real time and inhibits any aggravating movements when the preset safety limits are reached.

HYDRAULIC SYSTEM

The high-capacity hydraulic pump which provides a flow rate of **170 l/1'** helps speed up manoeuvres, **reducing operating times by up to 25%** compared with previous models.



ROPS-FOPS approved cab designed with safety cell to prevent deformation in the event of vehicle overturn or a heavy load falling on the cab.

STURDY FRAME

The frame is one of the defining characteristics of the Dieci Agri Star; all welds are performed by automated robots to ensure rigidity and total safety, even under high-stress conditions.

The machine is thus **totally free of vibration and flexure**.



MADE IN ITALY





FOR THE WORLD

DIECI, with more than half a century of experience and continuous development, achieves the **perfect vehicle** for every need.

Our **Technical Assistance Service** is present across the world through an extensive network of authorized service centers and Dealers.

The automated spare parts warehouses and the direct assistance with the user, provide a very short time of intervention.

DIECI, within a few hours, can provide worldwide both spare parts and qualified staff.

Warranty

DIECI offers customized warranty extension packs for components and durability.



PERFORMANCE			
Machine model	ZEUS 40.7 EVO2	ZEUS 38.8 EVO2	ZEUS 38.10 EVO2
Maximum capacity	4000 kg (8818 lb)	3800 kg (8378 lb)	3800 kg (8378 lb)
Maximum lifting height on wheels	7,20 m (23,6 ft)	7,60 m (24,9 ft)	9,60 m (31,5 ft)
Maximum horizontal extension on wheels	3,90 m (12,8 ft)	4,30 m (14,1 ft)	6,10 m (20 ft)
Fork swiveling angle	146°	146°	146°
Pull-out force	5700 daN (12814 lbf)	5700 daN (12814 lbf)	5700 daN (12814 lbf)
Towing force	6000 daN (13489 lbf)	6000 daN (13489 lbf)	6000 daN (13489 lbf)
Maximum climb angle	40%	40%	40%
Unladen weight	7800 kg (17196 lb)	7900 kg (17417 lb)	8150 kg (17968 lb)
Max speed (referred to wheels with maximum permitted diameter)	40 km/h (24,9 mph)	40 km/h (24,9 mph)	40 km/h (24,9 mph)

BOOM			
Machine model	ZEUS 40.7 EVO2	ZEUS 38.8 EVO2	ZEUS 38.10 EVO2
Lifting	7,3 s	7,2 s	8,7 s
Getting off the basket	3,8 s	3,7 s	5,0 s
Extension	5,2 s	5,5 s	7,6 s
Retraction	2,9 s	3,1 s	4,6 s
Forward swiveling	2,7 s	2,7 s	2,7 s
Reverse swiveling	1,7 s	1,6 s	1,6 s

ENGINE			
Machine model	ZEUS 40.7 EVO2	ZEUS 38.8 EVO2	ZEUS 38.10 EVO2
Brand	Kubota	Kubota	Kubota
Nominal power	83,5 kW (112 HP)	83,5 kW (112 HP)	83,5 kW (112 HP)
@rpm	2600 rpm	2600 rpm	2600 rpm
Operation	4-stroke	4-stroke	4-stroke
Injection	Electronic, Common Rail	Electronic, Common Rail	Electronic, Common Rail
Number and arrangement of cylinders	4, Vertical in line	4, Vertical in line	4, Vertical in line
Displacement	3769 cm ³ (230 in ³)	3769 cm ³ (230 in ³)	3769 cm ³ (230 in ³)
Consumption	231 g/kWh (380 lb/Hp h)	231 g/kWh (380 lb/Hp h)	231 g/kWh (380 lb/Hp h)
@rpm	2600 rpm	2600 rpm	2600 rpm
Emission standards	Stage IIIB/Tier 4i	Stage IIIB/Tier 4i	Stage IIIB/Tier 4i
Exhaust gas treatment	Particulate filter (DPF)	Particulate filter (DPF)	Particulate filter (DPF)
Cooling system	Liquid	Liquid	Liquid
Intake	Turbo compressor after-cooler	Turbo compressor after-cooler	Turbo compressor after-cooler

DIFFERENTIAL AXLES			
Machine model	ZEUS 40.7 EVO2	ZEUS 38.8 EVO2	ZEUS 38.10 EVO2
Axles type	2 steering, with 4 planetary reduction gears	2 steering, with 4 planetary reduction gears	2 steering, with 4 planetary reduction gears
Type of steering	4 wheels / transversal / 2 wheels	4 wheels / transversal / 2 wheels	4 wheels / transversal / 2 wheels
Front axle	Rigid	Rigid	Rigid
Rear axle	Swinging	Swinging	Swinging
Service braking	Oil bath with servo brake on front axle	Oil bath with servo brake on front axle	Oil bath with servo brake on front axle
Parking braking	Negative actuation with electrical control	Negative actuation with electrical control	Negative actuation with electrical control

HYDRAULIC SYSTEM			
Machine model	ZEUS 40.7 EVO2	ZEUS 38.8 EVO2	ZEUS 38.10 EVO2
Hydraulic pump type	Gear pump for power steering and movements	Gear pump for power steering and movements	Gear pump for power steering and movements
Hydraulic pump capacity	170 L/min (44,9 gal/min)	170 L/min (44,9 gal/min)	170 L/min (44,9 gal/min)
Max. operating pressure	25,5 MPa (3698 psi)	25,5 MPa (3698 psi)	25,5 MPa (3698 psi)
Distributor control	4in1 proportional Joystick	4in1 proportional Joystick	4in1 proportional Joystick

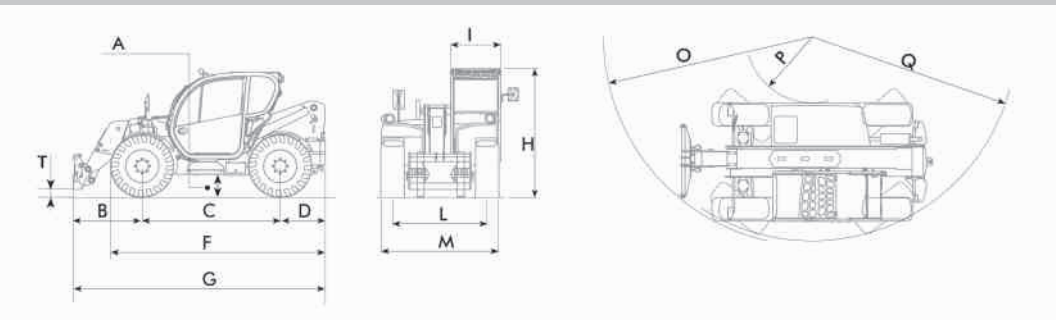
REFUELING			
Machine model	ZEUS 40.7 EVO2	ZEUS 38.8 EVO2	ZEUS 38.10 EVO2
Hydraulic system (total)	140,0 L (36,98 gal)	140,0 L (36,98 gal)	140,0 L (36,98 gal)
Diesel tank	160,0 L (42,27 gal)	160,0 L (42,27 gal)	160,0 L (42,27 gal)

TRANSMISSION			
Machine model	ZEUS 40.7 EVO2	ZEUS 38.8 EVO2	ZEUS 38.10 EVO2
Transmission type	Single speed Hydrostatic transmission with variable displacement pump	Single speed Hydrostatic transmission with variable displacement pump	Single speed Hydrostatic transmission with variable displacement pump
Hydraulic motor	Hydrostatic with continuous automatic adjustment	Hydrostatic with continuous automatic adjustment	Hydrostatic with continuous automatic adjustment
Reversal	Electro-Hydraulic	Electro-Hydraulic	Electro-Hydraulic
Inching	With hydraulic pedal for controlled forward movement	With hydraulic pedal for controlled forward movement	With hydraulic pedal for controlled forward movement
Transmission gearbox	-	-	-

TIRES			
Machine model	ZEUS 40.7 EVO2	ZEUS 38.8 EVO2	ZEUS 38.10 EVO2
Standard tires	400/70x20"	400/70x20"	400/70x20"
Optional tires	400/70x24"; 18x22.5"	400/70x24"; 18x22.5"	400/70x24"; 18x22.5"

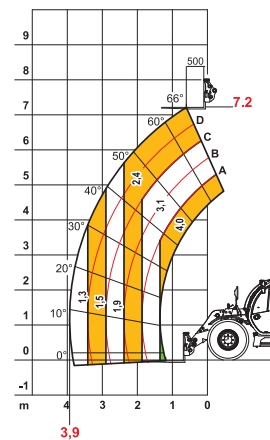
DIMENSIONS

Machine model	ZEUS 40.7 EVO2	ZEUS 38.8 EVO2	ZEUS 38.10 EVO2
A	390 mm (15,4 in)	390 mm (15,4 in)	390 mm (15,4 in)
B	1260 mm (49,6 in)	1500 mm (59,1 in)	1260 mm (49,6 in)
C	2750 mm (108,3 in)	2750 mm (108,3 in)	2750 mm (108,3 in)
D	970 mm (38,2 in)	970 mm (38,2 in)	970 mm (38,2 in)
F	4110 mm (161,8 in)	4110 mm (161,8 in)	4110 mm (161,8 in)
G	4950 mm (194,9 in)	4950 mm (194,9 in)	4950 mm (194,9 in)
H	2360 mm (92,9 in)	2360 mm (92,9 in)	2360 mm (92,9 in)
I	940 mm (37 in)	940 mm (37 in)	940 mm (37 in)
L	1780 mm (70,1 in)	1780 mm (70,1 in)	1780 mm (70,1 in)
M	2290 mm (90,2 in)	2290 mm (90,2 in)	2290 mm (90,2 in)
O	3700 mm (145,7 in)	3700 mm (145,7 in)	3700 mm (145,7 in)
P	950 mm (37,4 in)	950 mm (37,4 in)	950 mm (37,4 in)
Q	3450 mm (135,8 in)	3450 mm (135,8 in)	3450 mm (135,8 in)
T	128 mm (5 in)	211 mm (8,3 in)	174 mm (6,9 in)



The vehicles shown in this catalog can be equipped with standard attachments or equipment, on request or not available, according to the versions. Dieci Srl reserves the right to modify the specifications described and illustrated at any time and without prior notice. Non-contractual document. Non-exhaustive specification list. The photos and diagrams contained in this brochure are provided for consultation and for information purposes.

MAX 4,0 t



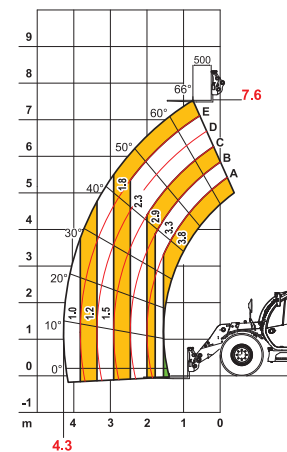
EN1459



DOCDI0000494

40.7 EVO2

MAX 3,8 t



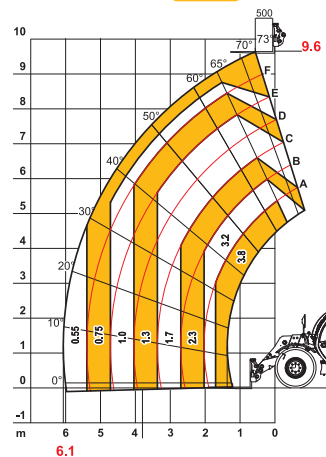
EN1459



DOCDI0000495

38.8 EVO2

MAX 3,8 t



EN1459



DOCDI0000496

38.10 EVO2

