

**DIECI**



**AGRI PIVOT**





# AGRI PIVOT

## THE MOST VERSATILE

The articulated vehicle with **great capacity** and telescopic boom that can meet every need.

Great agility, precise movements, excellent visibility, maximum power to the wheels and to the boom, absolute comfort: are just some of the reasons that make **Agri Pivot** essential.

The new generation, high performance ecological engines, with fully electronic control, deliver all the power you need with the lowest consumption of its category.

WHERE THE OTHERS CAN'T ARRIVE





# PIVOT

HI - TECHNOLOGY

COMFORT

EVOLUTION

GREEN CORE

AGRI PIVOT





# COMPACT LINE

3.46 - 4.155 m  
LOADING HEIGHT

1800 - 2250 Kg  
MAXIMUM CAPACITY

49 - 73 hp  
2 POSSIBLE ENGINE SIZES

## RELIABLE AND PRODUCTIVE!

6 models, a wide range of dedicated high quality attachments and components ensure a high performing level in all working conditions.

## Compact Flexible and Powerful.

All equipped with cutting-edge Intuitive technologies and large control display that provides all the operational information in real time. **Great performance for Great Results.**



Agri Pivot **T 40**  
49 hp  
3.46 m  
capacity 1800 kg  
mass 4950 kg

Agri Pivot **T 50**  
73 hp  
4.155 m  
capacity 2250 kg  
mass 6020 kg



Agri Pivot **T 60**  
73 hp  
4.155 m  
capacity 2250 kg  
mass 6020 kg

## CONCEPT

Hydrostatic transmission, central double-joint articulation with total steering angle of 80°, oscillating rear axle with a total range of 25°, large output angle (>30°) and moment limiter make





**Agri Pivot T 70**  
112 hp  
4.3 m  
capacity 3000 kg  
mass 7150 kg



**Agri Pivot T 80**  
129 hp  
4.47 m  
capacity 3500 kg  
mass 8000 kg



# HEAVY LINE

**3000 - 3500 Kg**  
MAXIMUM CAPACITY

**4.3 - 6.0 m**  
LOADING HEIGHT

**112 - 129 hp**  
2 POSSIBLE ENGINE SIZES

Agri Pivot an extremely handy, reliable and safe machine.

Possibility of coupling different accessories (engine) for the same model.

**DPF and SCR engines with AdBlue**

Fuel consumption is drastically reduced thanks to the new engines of latest generation, with fully electronic control.

The adoption of the latest exhaust gases treatment technologies such as **DPF** and **SCR** with **AdBlue** allow Agri Pivot to comply with the restrictive anti-pollution standards **Stage 3A - 3B/Tier 4i - Stage 4/Tier 4 Final**.



# EVOLUTION

40 Km/h  
FAST MOVEMENTS

PIVOT SYSTEM

FULL TRACTION  
CONTROL

INCHING  
PEDAL

VERSATILITY







## SPEED

Up to 40 km/h (limited by regulations) with high **tractive power**. **Rapid acceleration** and maneuvering in total safety.

## PIVOT SYSTEM

The ingenious two-pin articulation system gives Agri Pivot exceptional stability and robustness.

This particular solution also protects wiring and drive shaft inside the joint from accidental impact.

## INCHING PEDAL

An essential control when movements must be slowed right down or stopped and maximum hydraulic power is required for the equipment in use.

The **servo-assisted service brake** ensures safe and modulated braking, while reducing stress on the pedal.

## FULL TRACTION CONTROL

The innovative electronic engine/transmission control system allows **progressive speed control in all working conditions**.

## ISO 24410 UNIVERSAL MOUNTING FRAME

Available as an option, in mechanical or hydraulic version, it is used to achieve full interchangeability of all the attachments normally used for Skid Loaders (models T40 T50 T60 only).

## >30° OUTPUT ANGLE

There are no obstacles. In earth moving and off-road operations, the **LARGE >30°** output angle makes the Agri Pivot unstoppable.







COMFORT

ROPS-FOPS

360°  
VISIBILITY

ON-BOARD  
COMPUTER

A/C







## ABSOLUTE COMFORT

It's the first thing you notice on board an Agri Pivot. The intelligently designed control layout makes the machine simple, intuitive and comfortable to use.

Unparalleled technology with the new **on-board computer**.

The display shows clearly and in real time all the information necessary to operate the vehicle.

The **semi-automatic climate control** with 7 air vents, the sunroof and the total or partial opening of the 2 doors allow better ventilation during work.



The two large doors with 180° opening, makes it easier and safer to access the driver's seat.

Inside the cab everything has been designed in order to make work easier for the operator.

Soundproofing, **adjustable steering** wheel height and depth, storage compartments and various accessories such as radio, sunshade and pneumatic ergonomic seat allow to operate in conditions of total comfort.

The front curved glass, the windscreen wiper that cleans the upper section, the large glass surfaces and the raised driver's seat contribute to achieve an unparalleled **360°** view also with raised boom.





A yellow DIECI Agri Pivot 110 tractor is shown from a side-front perspective, parked in a barn. The tractor has a large front wheel and a smaller rear wheel. A green circular graphic with the text 'AGRI PIVOT' is overlaid on the front wheel area. In the background, a black and white cow is visible, and a large pile of hay is on the tractor's rear. The barn has a concrete floor and wooden walls. The text 'HANDLING' is written in large green letters at the top right.

# HANDLING

EASY RIDE

NEW  
JOYSTICK

TURNING  
RADIUS

EASY DUMPING

AGILITY





## ALL THE CONTROLS IN ONE HAND *with absolute precision.*

The 4-in-one joystick, standard equipment on all models, provides integrated control of the vehicle. The integral travel direction reversing control (optional) allows rapid shuttling between forward and reverse.

The compensated flow sharing control valve allows simultaneous operation of all movements.

## EASY DUMPING

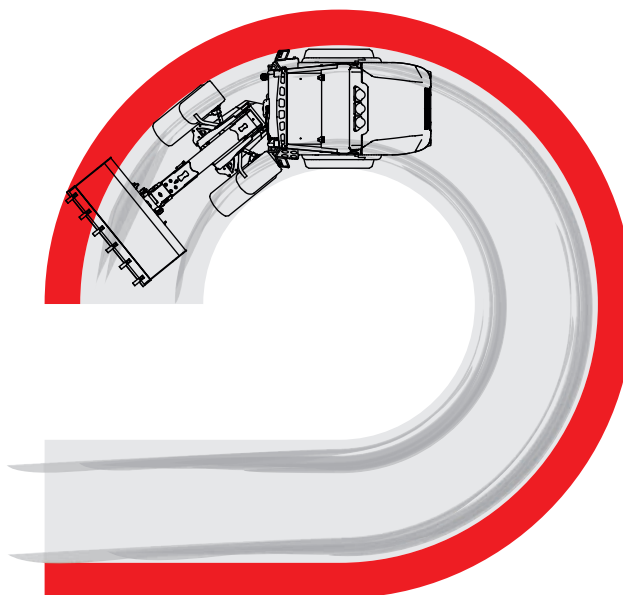
The exclusive and compact **swivel** mechanism, specifically designed to increase the service angle, is particularly valuable when recalling the bucket to the ground and unloading at maximum height.



## FOOTPRINT DIMENSIONS = VEHICLE DIMENSIONS

The central articulation system is craftily and smartly designed by **DIECI** engineers as it allows excellent control by the operator when maneuvering.

The machine footprint is always determined by the front or rear wheels, ensuring that the operator will never hit obstacles with the vehicle rear when operating.



## AGILITY

The high-efficiency steering system ensures that even under high load conditions the steering always feels **light and responsive**.

The steering is performed by 2 hydraulic cylinders that make the maneuver uniform and compact in the two directions.

## EASY RIDE

Developed by **DIECI** design engineers, the sophisticated pneumo-hydraulic suspension system installed on the boom (optional) drastically reduces oscillation when traveling over rough terrain.





# GREEN CORE

- 20%  
FUEL  
CONSUMPTION

## SCR

(SELECTIVE CATALYST REDUCTION)

## DPF

(DIESEL PARTICULATE FILTER)

STAGE 3A  
STAGE 3B/Tier 4i  
STAGE 4 /Tier 4 Final  
NEW ENGINES

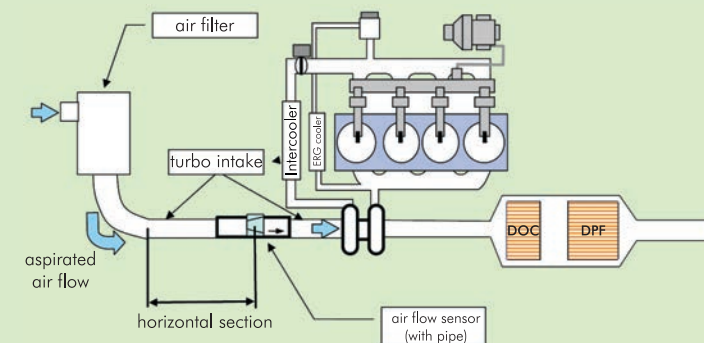
AGRI PIVOT





## Stage 3B/Tier 4i ENGINES

Turbo Diesel Aftercooler Engines  
Common Rail with fully electronic control.



## DIECI FOR THE ENVIRONMENT

*A leap forward into a cleaner, more sustainable future.*

Dieci has chosen full electronic management of fuel injection, turbo pressure, torque, engine rpm, engine brake, starter safety release, monitoring, diagnostics and the **SCR (AdBlue)** or **DPF** system for the treatment of exhaust emissions.

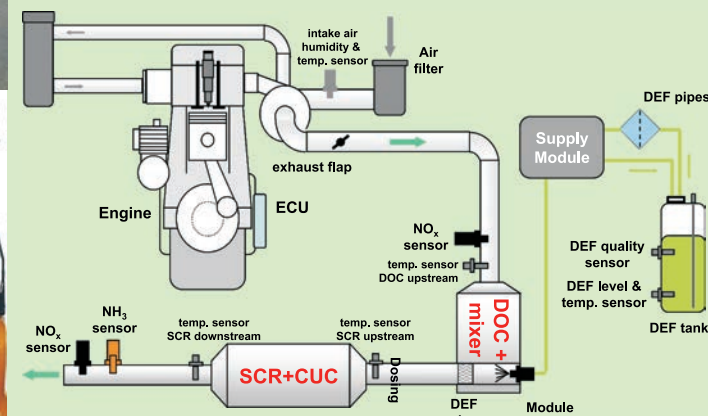
**Enhanced performance, lower fuel consumption**, reduced engine oil contamination and longer intervals between services.



Significant reduction in fuel consumption and longer intervals between services.

## Stage 4/Tier4 final ENGINES:

Updated with the latest regulations, reduced emissions up to 90% due to particulate removal and 50% less nitrogen oxides.





# PIVOT SYSTEM

CENTRAL BOOM

DOUBLE-PIN  
ARTICULATED  
JOINT

FLAT BOTTOM

REAR  
OSCILLATING  
AXLE

AGRI PIVOT





## PIVOT SYSTEM

Exceptional result obtained by the staff of Dieci engineers for the central double-joint articulation with 80° steering angle.

Two joints with high resistance, grease lubricated pins and bushings,

and guarantee of perfect seal with LONG LIFE gaskets.

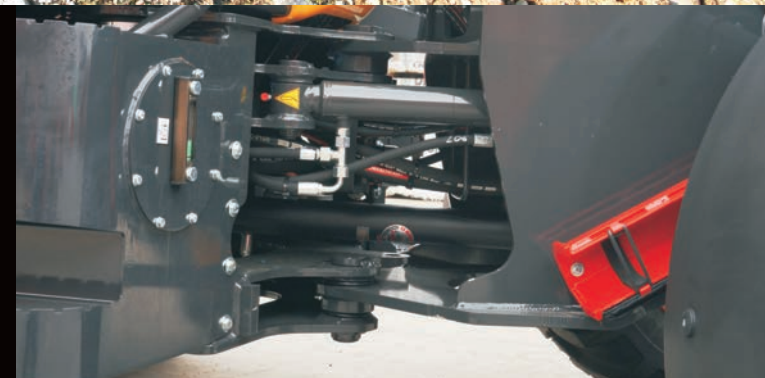
Incredible robustness: even in extreme situations the joint does not undergo deformation. Flat bottom and drive shaft positioned within the joint allow the operator to work any terrain in total peace of mind.



## REAR OSCILLATING AXLE

This system allows the perfect adaptability to any type of terrain, always ensuring four support points and maintaining maximum lateral stability as on a flat ground.

Rear oscillating axle, >30° output angle, boom in central position and with the many stability sensors it is possible to operate in extreme conditions in total safety.





# TECHNOLOGY

65 - 114 1/1'

QUICK DEP

COMPUTER







## HYDRAULIC SYSTEM

The new hydraulic pumps, with flow rate from 65 to 114 l/1', ensure greater speed of execution of the maneuvers and processing times **reduction up to 20%**.

## QUICK DEP

System for depressurising the hydraulic service couplers: makes the connection of implements easy and effortless.



## ON-BOARD COMPUTER

Advanced instrumentation with a large display and intuitive icon-based interface that provides comprehensive and detailed information. Constant monitoring of operating conditions and in-depth diagnostics using real-time data.





# CAMERA

## 1000 HOURS

## EASY MAINTENANCE

AGRI PIVOT





## MAINTENANCE

All the available spaces are properly exploited to house the fuel and AdBlue tanks in a safe and accessible position.

Routine maintenance to the engine is facilitated by the hinged hood.

## 1000 HOURS

Engine oil replacement every 500 hours and periodic maintenance for all components such as filters and moving parts every 1000 hours.

Longer work cycles, less stops, **greater productivity.**



## CAMERA MAXIMUM CONTROL

The cameras (optional) provide a millimetric view on the screen facilitating the load and movement operations.



**AXES LONG LIFE**

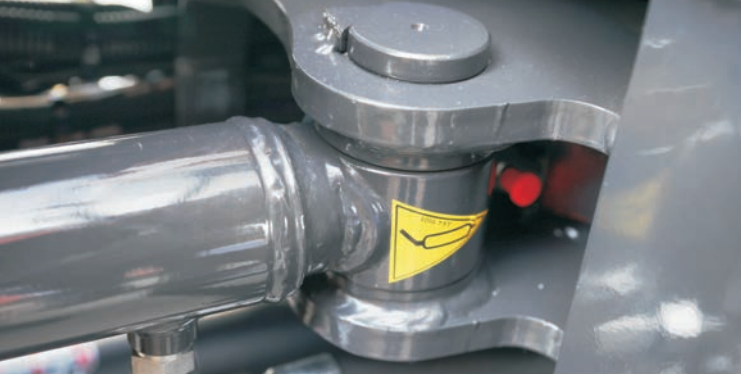
**COMPACT  
CAB**

**CYLINDER  
INSIDE  
THE BOOM**

**FORKS  
PARALLELISM**







## AXES LONG LIFE

Axes et douilles ont été installés sur les points d'articulation du Pivot et sont graissés et retenus par des joints type LONG LIFE.

## ATTACHMENTS PARALLELISM

The compensation system allows to automatically maintain the attachments parallel to the ground during the boom lifting and lowering operations.



## POWER INSIDE

The boom positioned centrally with respect to the machine and the extension cylinder arrange inside it ensure better visibility, without risk of accidental impacts.

## COMPACT CAB

The DIECI research and development department designed the lowest cab of the category keeping the driving seat in raised position and obtaining the perfect combination of visibility and compactness.





# SAFETY

## ROPS-FOPS

## ANTI-TIPPING SYSTEM



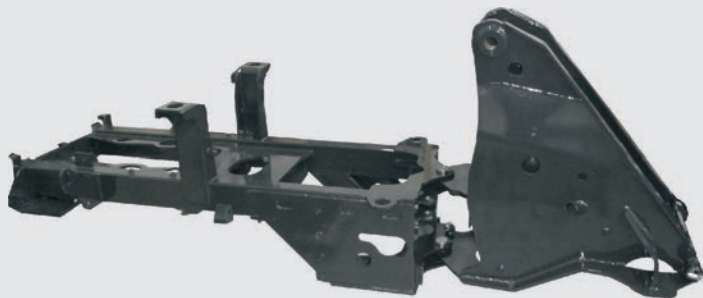


**ROPS-FOPS approved** cab designed with safety cell to prevent deformation in the event of vehicle overturn or a heavy load falling on the cab.

## STURDY CHASSIS

The chassis, with a strong visual impact, unmistakably characterizes Agri Pivot Dieci, the **oversized** structure confers rigidity and total safety even under the most stressful conditions.

The machine is thus totally **free of vibration and flexure**.



## ANTI-TIPPING SYSTEM

Every Dieci machine is equipped with a torque limiter that analyzes vehicle stability in real time and inhibits any aggravating movements when the pre-set safety limits are reached.

**Hydraulic servo brake** as standard on all models to assist the vehicle stopping in the most extreme conditions.

The **Joystick** is equipped with a **capacitive deadman sensor** which, combined with the operator presence sensor in the seat, prevents accidental operation.





# MADE IN ITALY







# FOR THE WORLD

**DIECI**, with more than half a century of experience and continuous development, achieves the **perfect vehicle** for every need.

Our **Technical Assistance Service** maintains a world-wide **presence** through an **extensive network** of authorized service centers and dealers.

The automated spare parts warehouses and the direct assistance with the user, provide a very short time of intervention.

**DIECI**, within a few hours, can provide worldwide both spare parts and qualified staff.

## **Warranty**

**DIECI** offers customized warranty extension packs for components and durability.





Performance					
Machine model	AGRI PIVOT T40	AGRI PIVOT T50	AGRI PIVOT T60	AGRI PIVOT T70	AGRI PIVOT T80
Operating weight with standard bucket and quick coupling	4950 kg (10913 lb)	6020 kg (13272 lb)	6020 kg (13272 lb)	7150 kg (15763 lb)	8000 kg (17637 lb)
Standard bucket capacity	0,75 m³ (26 ft³)	0,85 m³ (30 ft³)	0,85 m³ (30 ft³)	1,10 m³ (39 ft³)	1,20 m³ (42 ft³)
Pull-out force	4075 daN (9161 lbf)	4800 daN (10791 lbf)	4800 daN (10791 lbf)	6000 daN (13489 lbf)	6700 daN (15062 lbf)
Towing force	3400 daN (7644 lbf)	4600 daN (10341 lbf)	5700 daN (12814 lbf)	6000 daN (13489 lbf)	6500 daN (14613 lbf)
Maximum climb angle	60%	70%	80%	70%	60%
Max speed (referred to wheels with maximum permitted diameter)	22 km/h (13,7 mph)	30 km/h (18,6 mph)	40 km/h (24,9 mph)	40 km/h (24,9 mph)	36 km/h (22,4 mph)
Retracted in line tipping load	3600 kg (7937 lb)	4050 kg (8929 lb)	4050 kg (8929 lb)	4800 kg (10582 lb)	6100 kg (13448 lb)
Retracted articulated tipping load	3200 kg (7055 lb)	3575 kg (7882 lb)	3575 kg (7882 lb)	4250 kg (9370 lb)	5400 kg (11905 lb)
Extended in line tipping load	2100 kg (4630 lb)	2350 kg (5181 lb)	2350 kg (5181 lb)	2500 kg (5512 lb)	3200 kg (7055 lb)
Extended articulated tipping load	1850 kg (4079 lb)	2050 kg (4519 lb)	2050 kg (4519 lb)	2350 kg (5181 lb)	2800 kg (6173 lb)
Operating load EN474.3 (80%) retracted	1800 kg (3968 lb)	2250 kg (4960 lb)	2250 kg (4960 lb)	3000 kg (6614 lb)	3500 kg (7716 lb)
Operating load EN474.3 (60%) retracted	1350 kg (2976 lb)	1700 kg (3748 lb)	1700 kg (3748 lb)	2300 kg (5071 lb)	2600 kg (5732 lb)
Operating load EN474.3 (80%) extended	1250 kg (2756 lb)	1400 kg (3086 lb)	1400 kg (3086 lb)	1650 kg (3638 lb)	1800 kg (3968 lb)
Operating load EN474.3 (60%) extended	950 kg (2094 lb)	1050 kg (2315 lb)	1050 kg (2315 lb)	1300 kg (2866 lb)	1400 kg (3086 lb)

## BOOM

Machine model	AGRI PIVOT T40	AGRI PIVOT T50	AGRI PIVOT T60	AGRI PIVOT T70	AGRI PIVOT T80
Lifting	7,3 s	5,2 s	5,2 s	5,3 s	5,3 s
Getting off the basket	3,8 s	2,8 s	2,8 s	3,0 s	3,0 s
Extension	2,5 s	2,4 s	2,4 s	2,3 s	3,2 s
Retraction	1,4 s	1,3 s	1,3 s	1,2 s	1,8 s
Forward swiveling	2,2 s	1,8 s	1,8 s	2,1 s	2,4 s
Reverse swiveling	1,6 s	1,3 s	1,3 s	1,3 s	1,6 s

## ENGINE

Machine model	AGRI PIVOT T40	AGRI PIVOT T50	AGRI PIVOT T60	AGRI PIVOT T70	AGRI PIVOT T80
Brand	Kubota	Kubota	Kubota	Kubota	FPT
Nominal power	36,5 kW (49 HP)	54,6 kW (73 HP)	54,6 kW (73 HP)	83,5 kW (112 HP)	96 kW (129 HP)
@rpm	2700 rpm	2600 rpm	2600 rpm	2600 rpm	2200 rpm
Operation	4-stroke	4-stroke	4-stroke	4-stroke	4-stroke
Injection	Mechanical	Electronic, Common rail	Electronic, Common rail	Electronic, Common Rail	Electronic, Common Rail
Number and arrangement of cylinders	4, Vertical in line	4, Vertical in line	4, Vertical in line	4, Vertical in line	4, Vertical in line
Displacement	2615 cm³ (160 in³)	3331 cm³ (203 in³)	3331 cm³ (203 in³)	3769 cm³ (230 in³)	4485 cm³ (274 in³)
Consumption	235 g/kWh (386,58 lb/Hp h)	231 g/kWh (380 lb/Hp h)	231 g/kWh (380 lb/Hp h)	227 g/kWh (373,42 lb/Hp h)	205 g/kWh (337,23 lb/Hp h)
@rpm	2700 rpm	2600 rpm	2600 rpm	2600 rpm	2200 rpm
Intake	Natural	Turbo compressor	Turbo compressor	Turbocharger after-cooler	16-valve turbo compressor, aftercooler
Cooling system	Liquid	Liquid	Liquid	Liquid	Liquid
Emission standards	Stage IIIA/Tier 3	Stage IIIB/Tier 4i	Stage IIIB/Tier 4i	Stage IIIB/Tier 4i	Stage IV/Tier 4f
Starter motor	12 V - 3 kW	12 V - 3 kW	12 V - 3 kW	12 V - 3 kW	12 V - 3 kW

## DIFFERENTIAL AXLES AND STEERING WHEEL

Machine model	AGRI PIVOT T40	AGRI PIVOT T50	AGRI PIVOT T60	AGRI PIVOT T70	AGRI PIVOT T80
Axles type	2 rigid, with 4 planetary reduction gears	2 rigid, with 4 planetary reduction gears	2 rigid, with 4 planetary reduction gears	2 rigid, with 4 planetary reduction gears	2 rigid, with 4 planetary reduction gears
Type of steering	With articulated chassis with a total angle of 80°, servo-assisted by power steering (Load Sensing)	With articulated chassis with a total angle of 80°, servo-assisted by power steering (Load Sensing)	With articulated chassis with a total angle of 80°, servo-assisted by power steering (Load Sensing)	With articulated chassis with a total angle of 80°, servo-assisted by power steering (Load Sensing)	With articulated chassis with a total angle of 80°, servo-assisted by power steering (Load Sensing)
Front axle	Rigid, self-locking	Rigid, self-locking	Rigid, self-locking	Rigid, self-locking	Rigid, self-locking
Rear axle	Swinging with 25° total stroke	Swinging with 25° total stroke	Swinging with 25° total stroke	Swinging with 25° total stroke	Swinging with 25° total stroke
Service braking	Oil bath with servo brake on front axle	Oil bath on front and rear axles on servo brake	Oil bath on front and rear axles with servo brake	Oil bath with servo brake on front axle	Oil bath with servo brake on front and rear axles
Parking braking	Negative actuation with electrical control	Negative actuation with electrical control	Negative action parking brake on both axles	Negative actuation with electrical control	Negative action parking brake on front axles

## HYDRAULIC SYSTEM

Machine model	AGRI PIVOT T40	AGRI PIVOT T50	AGRI PIVOT T60	AGRI PIVOT T70	AGRI PIVOT T80
Hydraulic pump type	Gear pump for power steering and movements	Gear pump for power steering and movements	Gear pump for power steering and movements	Gear pump for power steering and movements	Gear pump for power steering and movements
Hydraulic pump capacity	65 L/min (17,2 gal/min)	101 L/min (26,7 gal/min)	101 L/min (26,7 gal/min)	114 L/min (30,1 gal/min)	114 L/min (30,1 gal/min)
Max. operating pressure	25,0 MPa (3626 psi)	23,0 MPa (3336 psi)	23,0 MPa (3336 psi)	25,0 MPa (3626 psi)	25,0 MPa (3626 psi)

## REFUELING

Machine model	AGRI PIVOT T40	AGRI PIVOT T50	AGRI PIVOT T60	AGRI PIVOT T70	AGRI PIVOT T80
Hydraulic system (total)	70,0 L (18,49 gal)	80,0 L (21,13 gal)	80,0 L (21,13 gal)	110,0 L (29,06 gal)	120,0 L (31,7 gal)
Diesel tank	75,0 L (19,81 gal)	100,0 L (26,42 gal)	100,0 L (26,42 gal)	140,0 L (36,98 gal)	140,0 L (36,98 gal)
AdBlue tank	-	-	-	-	27,00 L (7,13 gal)

## TRANSMISSION

Machine model	AGRI PIVOT T40	AGRI PIVOT T50	AGRI PIVOT T60	AGRI PIVOT T70	AGRI PIVOT T80
Transmission type	Hydrostatic with variable displacement pump	Hydrostatic with variable displacement pump	Hydrostatic with variable displacement pump	Hydrostatic with variable displacement pump	Hydrostatic with variable displacement pump
Hydraulic motor	Hydrostatic with continuous automatic adjustment	Hydrostatic with continuous automatic adjustment	Hydrostatic with continuous automatic adjustment	Hydrostatic with continuous automatic adjustment	Hydrostatic with continuous automatic adjustment
Transmission gearbox	With 2 forward speeds / 2 reverse speeds	Single speed Dropbox	Servo-controlled 2-speed	With 2 servocontrolled gears with 4 forward speeds / 4 reverse speeds	Single speed Dropbox
Inching	With hydraulic pedal for controlled forward movement	With hydraulic pedal for controlled forward movement	With hydraulic pedal for controlled forward movement	With hydraulic pedal for controlled forward movement	Pedal inching for controlled forward movement

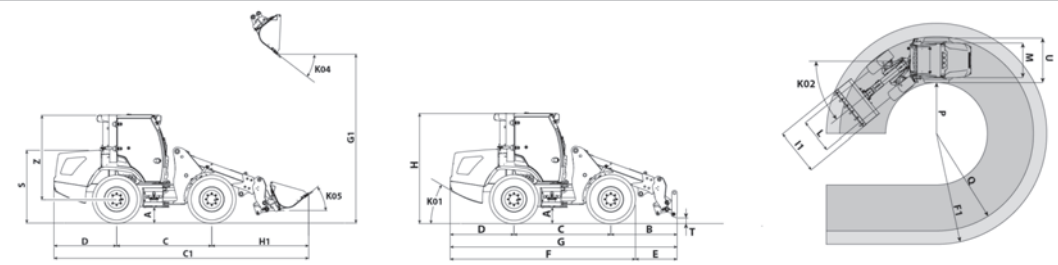
## TIRES

Machine model	AGRI PIVOT T40	AGRI PIVOT T50	AGRI PIVOT T60	AGRI PIVOT T70	AGRI PIVOT T80
Standard tires	12.5x18"	405/70x20"	405/70x20"	405/70x20"	15.5x25"
Optional tires	365/70R18"; 40S/70R18"; 500/45R20"	420/75R20"; 500/45R20"; 600/40R22.5"	420/75R20"; 500/45R20"; 600/40R22.5"	460/70R24"; 600/50x22.5"	460/70R24"; 600/50x22.5"; 500/70x24"

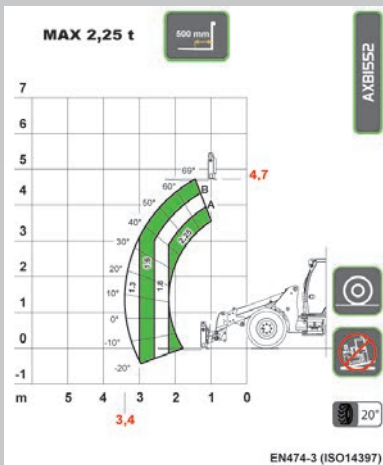


## DIMENSIONS

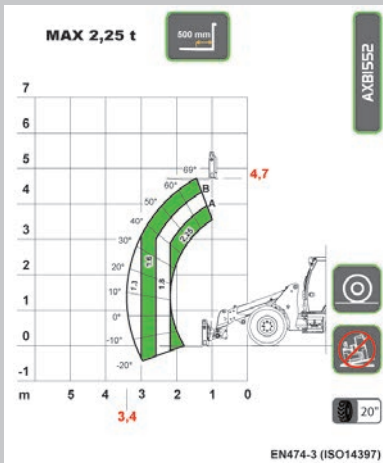
Machine model	AGRI PIVOT T40	AGRI PIVOT T50	AGRI PIVOT T60	AGRI PIVOT T70	AGRI PIVOT T80
A	300 mm (11,8 in)	365 mm (14,4 in)	365 mm (14,4 in)	410 mm (16,1 in)	400 mm (15,7 in)
B	1485 mm (58,5 in)	1750 mm (68,9 in)	1750 mm (68,9 in)	1570 mm (61,8 in)	1670 mm (65,7 in)
C	2150 mm (84,6 in)	2200 mm (86,6 in)	2200 mm (86,6 in)	2400 mm (94,5 in)	2550 mm (100,4 in)
C1	5650 mm (222,4 in)	6015 mm (236,8 in)	6015 mm (236,8 in)	6250 mm (246,1 in)	6760 mm (266,1 in)
D	1485 mm (58,5 in)	1450 mm (57,1 in)	1450 mm (57,1 in)	1550 mm (61 in)	1675 mm (65,9 in)
E	990 mm (39 in)	1190 mm (46,9 in)	1190 mm (46,9 in)	900 mm (35,4 in)	1030 mm (40,6 in)
F	4045 mm (159,3 in)	4210 mm (165,7 in)	4210 mm (165,7 in)	4620 mm (181,9 in)	4865 mm (191,5 in)
F1	4370 mm (172 in)	4670 mm (183,9 in)	4670 mm (183,9 in)	5000 mm (196,9 in)	5300 mm (208,7 in)
G	5035 mm (198,2 in)	5400 mm (212,6 in)	5400 mm (212,6 in)	5520 mm (217,3 in)	5895 mm (232,1 in)
G1	3460 mm (136,2 in)	4155 mm (163,6 in)	4155 mm (163,6 in)	4300 mm (169,3 in)	4400 mm (173,2 in)
H	2420 mm (95,3 in)	2490 mm (98 in)	2490 mm (98 in)	2690 mm (105,9 in)	2680 mm (105,5 in)
H1	2100 mm (82,7 in)	2365 mm (93,1 in)	2365 mm (93,1 in)	2300 mm (90,6 in)	2520 mm (99,2 in)
I1	1700 mm (66,9 in)	2000 mm (78,7 in)	2000 mm (78,7 in)	2100 mm (82,7 in)	2200 mm (86,6 in)
L	1350 mm (53,1 in)	1430 mm (56,3 in)	1430 mm (56,3 in)	1560 mm (61,4 in)	1790 mm (70,5 in)
M	1675 mm (65,9 in)	1880 mm (74 in)	1880 mm (74 in)	1980 mm (78 in)	2400 mm (94,5 in)
P	2120 mm (83,5 in)	2060 mm (81,1 in)	2060 mm (81,1 in)	2400 mm (94,5 in)	2500 mm (98,4 in)
Q	3830 mm (150,8 in)	4010 mm (157,9 in)	4010 mm (157,9 in)	4450 mm (175,2 in)	4750 mm (187 in)
S	1670 mm (65,7 in)	1699 mm (66,9 in)	1699 mm (66,9 in)	1870 mm (73,6 in)	1937 mm (76,3 in)
T	69 mm (2,7 in)	93 mm (3,7 in)	93 mm (3,7 in)	186 mm (7,3 in)	201 mm (7,9 in)
U	1753 mm (69 in)	1829 mm (72 in)	1829 mm (72 in)	1970 mm (77,6 in)	2130 mm (83,9 in)
Z	1962 mm (77,2 in)	1962 mm (77,2 in)	1962 mm (77,2 in)	2056 mm (80,9 in)	2106 mm (82,9 in)
K01	30°	31°	31°	31°	30°
K02	40°	40°	40°	40°	40°
K04	40°	40°	40°	40°	40°
K05	40°	40°	40°	40°	40°



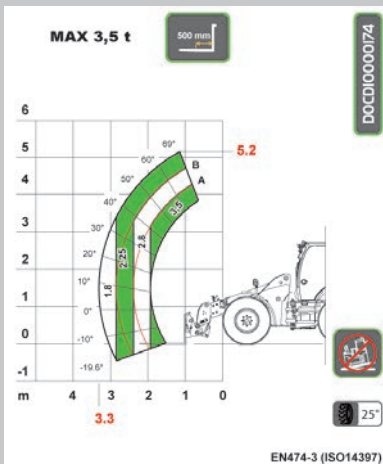
The vehicles shown in this catalog can be equipped with standard attachments or equipment, on request or not available, according to the versions. Dieci Srl reserves the right to modify the specifications described and illustrated at any time and without prior notice. Non-contractual document. Non-exhaustive specification list. The photos and diagrams contained in this brochure are provided for consultation and for information purposes.



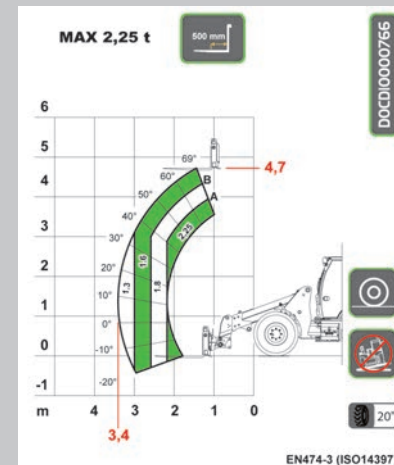
T 40



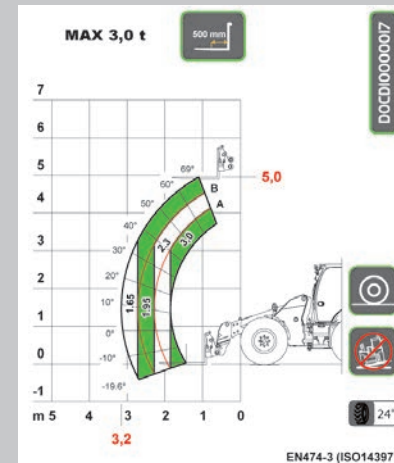
T 50



T 60



T 70



T 80



