



DIECI

AGRI MAX



AGRI MAX

Surprising lifting capacity
The most compact machine in its class

Maximum power at the wheels and at the boom, superb handling, precision manoeuvring, absolute comfort.

Agri Max is the most powerful and technologically advanced machine in the Dieci range.

The new ecological high-performance engines, with full electronic control, combined with the new VS EVO 2 transmission, deliver all the power you need, while drastically **reducing** fuel consumption by **20%**.

FOR THE BIGGEST THE STRONGEST



EVOLUTION

AGRI MAX

EVO 2

COMFORT

HI - TECHNOLOGY

GREEN CORE



WIDE RANGE

3 MODELS

HYDROSTATIC - VS
2 TRANSMISSIONS

8 - 10 m
BOOM HEIGHT

6000 - 7500 Kg
MAX CAPACITY

152 hp
1 PROPULSION UNITS

AGRI MAX



TWO TRANSMISSIONS

VARIO SYSTEM EVO 2

4 operating modes.

Allows you to always find the best possible speed/power ratio in any operating conditions, ensuring an unrivalled smoothness and fluidity of movement with millimetric precision.

HYDROSTATIC

Powerful and progressive

Built using components of the latest generation and backed up by the generous performance of the propulsion units, the hydrostatic transmission allows fluid and precise manoeuvres.

THE STRONGEST

Much more than a technological response to the specific needs of modern agriculture: more strength, more productivity, more comfort, more results.

The most powerful machine in the Dieci agricultural range, an astonishing lifting capacity at high levels for the farming industry.

Agri Max responds readily, precisely and smoothly to the controls, providing an exceptional level of operator comfort and total safety.

NEW **AdBlue** and **DPF** ENGINES

Stage 3B/Tier 4i of the latest generation with full electronic control and **fuel consumption reduced by more than 20 %**.

Max power ratings of 152 hp available at 1900 rpm from the 4.5 litre propulsion units, capable of delivering all the available power to the new transmission to guarantee **maximum performance**.



STACKING

EVOLUTION

40 Km/h

FOR RAPID TRANSFERS

TOWING TRAILERS

DCS

DESCENT CONTROL SYSTEM





SPEED

40 km/h (limited by regulations) with high tractive power. Rapid acceleration and manoeuvring in total safety.

UNPARALLELED MANOEUVRABILITY

The use of the VS hydrostatic transmission, combined with the correct operating mode, allows easy, precise manoeuvring. This makes for improved performance in **stacking** operations.

The combined use of the electronic throttle and inching pedal allow the vehicle to be driven at **slow, controlled speeds**, even with the boom at maximum speed.

MAXIMUM PERFORMANCE

The perfect balance between two the ultra-reliable speed and temperature control systems makes for exceptional performance when **towing** or working with a bucket.

In **silaging** work, you can count on **high traction at low speeds on steep slopes**.

The innovative electronic engine/transmission control system allows **progressive speed control in all working conditions**.

Stage 3B/Tier 4i ENGINES with AdBlue or DPF:

The brand new Turbo Aftercooled Common Rail Diesel engines with full electronic control. The SCR emissions control system used on the entire range **means lower fuel consumption and longer intervals between services**.

DCS Descent Control System

New servo-assisted valves allow the boom to be lowered at low revs and an instantaneous response to the controls.

A further **reduction in fuel consumption** of up to 10%.





COMFORT

ROPS-FOPS

360°

VISIBILITY

ON-BOARD
COMPUTER

A/C





ABSOLUTE COMFORT

It's the first thing you notice on board an Agri Max. The intelligently designed control layout makes the machine simple, intuitive and comfortable to use.

Unparalleled technology with the new **on-board computer**.

The display shows clearly and in real time all the information necessary to operate the vehicle.

The **semi-automatic air conditioning system** with 7 outlet vents allows perfect air circulation inside the cabin. The openable roof hatch and rear window, standard on all models, allowing improved ventilation while working.



With the **widest** cab door on the market, accessing the driving position is easy and safe.

Inside the cab everything has been designed in order to make work easier for the operator.

Soundproofing, **adjustable steering wheel** in both height and reach, **electric windows**, storage compartments and a range of accessories including **air conditioning**, radio, sunblind and ergonomic seat with pneumatic suspension ensure total operator comfort.

The windscreen wiper also cleans the glass at the top of the cab.

A wide mesh safety grille and one of the highest driving positions in its class provide an unrivalled visibility of **360°**.



HANDLING

EASY DUMPING

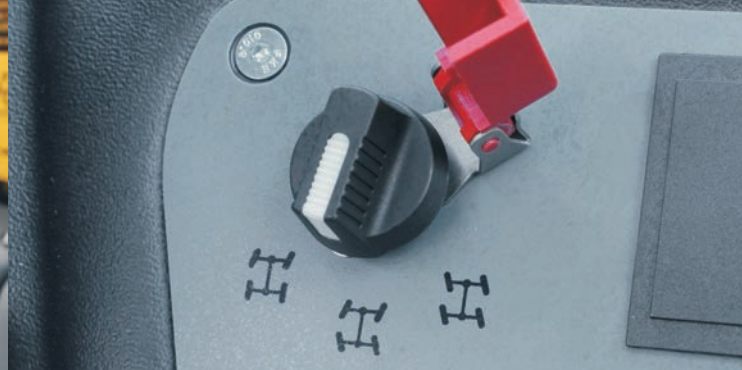
NEW
JOYSTICK

EASY RIDE

AGILITY

INCHING PEDAL





ALL THE CONTROLS IN ONE HAND

with absolute precision.

The 4-in-one joystick, standard equipment on all models, provides integrated control of the vehicle. The integral travel direction control allows rapid shuttling between forward and reverse.

The compensated flow sharing control valve allows simultaneous operation of all movements.

EASY DUMPING

The ingenious **slewing** system is specially designed to increase the operating arc, which is particularly useful when dumping with the boom raised.



STRENGTH AND AGILITY

The high-efficiency steering system has the **smallest turning circle in its class** and always **feels light** and responsive.

Steering mode change facilitated by the **self-aligning** wheels system.

Plenty of power for handling very heavy loads without compromising manoeuvrability.

INCHING PEDAL

An essential control when movements must be slowed right down or stopped and maximum hydraulic power is required for the equipment in use.

The **servo-assisted service brake** ensures safe and modulated braking, while reducing stress on the pedal.

EASY RIDE

Developed by Dieci design engineers, the sophisticated air suspension system installed on the boom (optional) drastically reduces oscillation when travelling over rough terrain.



GREEN CORE



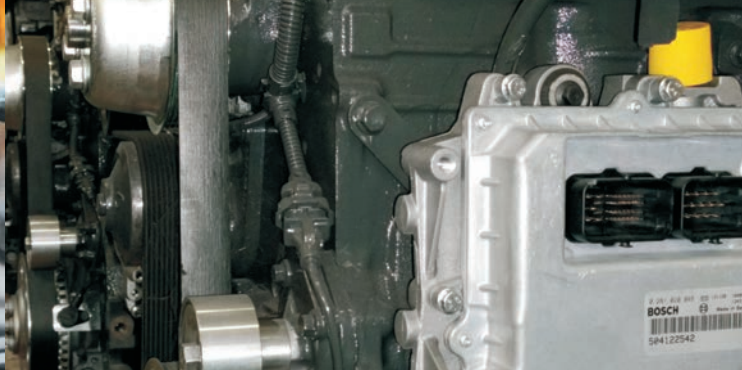
-20%
FUEL
CONSUMPTION

**TFT DISPLAY
USER INTERFACE**

SCR

(SELECTIVE CATALYST REDUCTION)

**STAGE 3B / Tier 4i
NEW ENGINES**



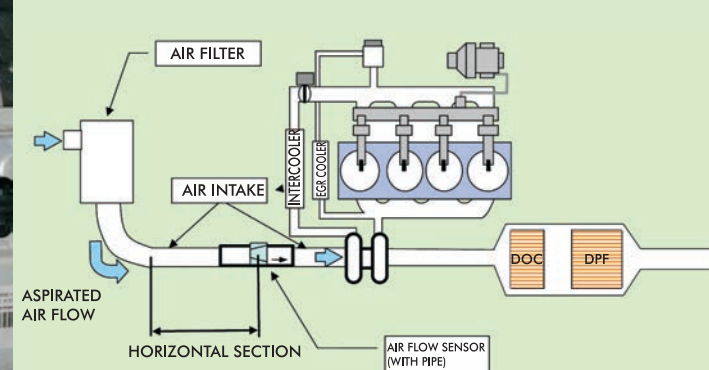
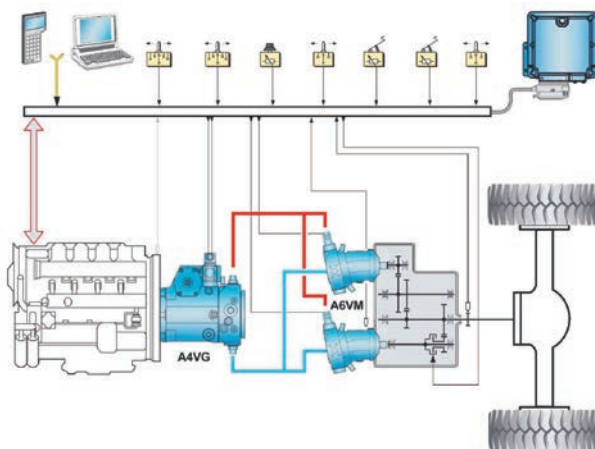
ON-BOARD COMPUTER

Advanced instrumentation with a large **color display** and intuitive icon-based interface provides more comprehensive and detailed information.

All machine functions are managed via the **CANBUS system**, which provides an improved response in rapid time.

Constant monitoring of operating conditions and in-depth diagnostics using real-time data.

For VS versions, integrated electronic management of the engine and transmission provides **fuel savings of up to 20% and a corresponding reduction in CO, CO₂ and NO_x emissions.**

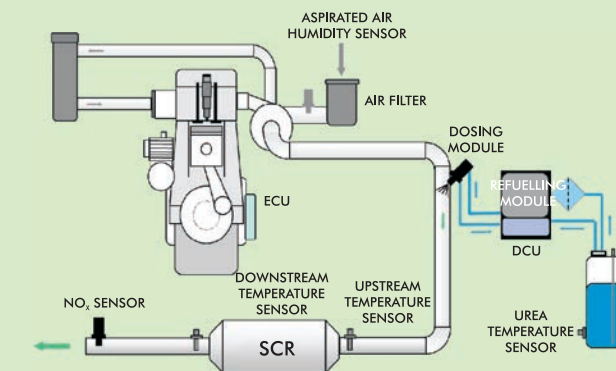


DIECI FOR THE ENVIRONMENT

A leap forward into a cleaner, more sustainable future.

Dieci has chosen full electronic management of fuel injection, turbo pressure, torque, engine rpm, engine brake, starter safety release, monitoring, diagnostics and the **SCR (AdBlue)** system for the treatment of exhaust emissions.

Improved performance, reduced fuel consumption, less contamination of the engine oil, longer intervals between services and a durable SCR system, which will last at least as long as the engine.



VS EVO 2

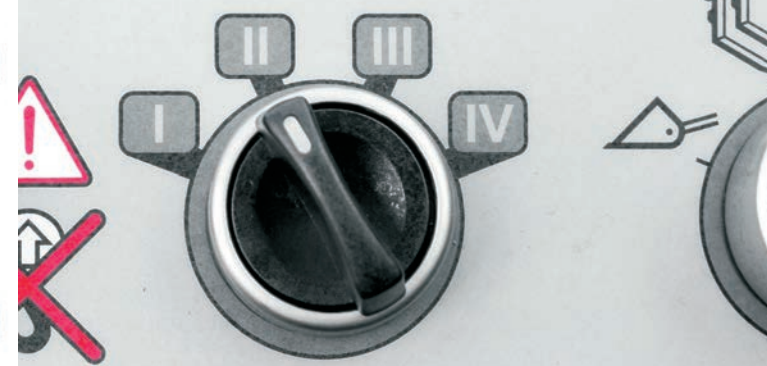
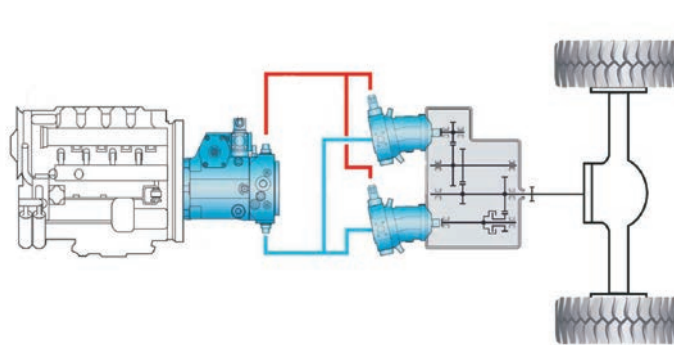
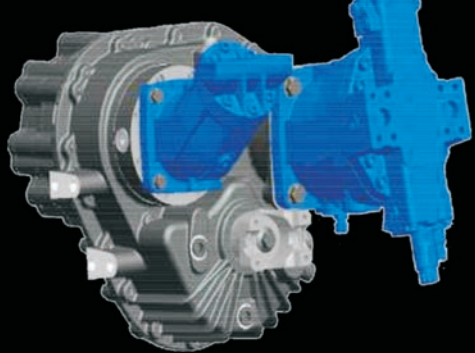
LOADER

ECO

CREEPER

NORMAL





VS EVO 2 DUAL MOTOR

An ingenious way to fully exploit all the horsepower made available by the generous performance of the propulsion unit.

The hydrostatic pump combined with two hydraulic piston motors forms the heart of the transmission.

The electronic control system that manages power delivery disconnects one of the motors on reaching high speeds, while maintaining the power delivered to the wheels unchanged, thereby **reducing fuel consumption by as much as 20%**.



4 OPERATING MODES

The best performance in all work situations.

NORMAL: suitable for road transfers, with a top speed of 40 km/h and superior towing capacity.

ECO: the perfect way to obtain considerable fuel savings.

LOADER: ideal per loading and bucket work, providing greater controls sensitivity so that power can be delivered safely to the attachment, for a reduced top speed.

CREEPER: the perfect combination power delivery and manoeuvring speed, thereby avoiding the typical problems of foundering (silage).



TECHNOLOGY

QUICK DEP

CAMERA

160 - 185 l/h

LARGER
TANKS

COMPENSATION CYLINDER





HYDRAULIC SYSTEM

The high-capacity hydraulic pump, which provides flow rates of **160 or 185 l/min**, helps speed up boom movements, **reducing operating times by up to 25%** compared with previous models. VS models are equipped as standard with a LOAD SENSING pump.

The **compensation cylinder (PATENTED BY DIECI)**, located inside the lifting ram, ensures that the load on the boom is balanced at all times, thereby improving durability.

QUICK DEP

System for depressurising the hydraulic service couplers: makes the connection of implements easy and effortless.

DESIGN

It has always been a feature of DIECI machines, but never as an end in itself.

The **NEW BOOMS** are designed and constructed to meet increasingly tougher demands.

MAINTENANCE

All the technical improvements adopted have created extra space for **larger tanks** for fuel, oil and AdBlue.

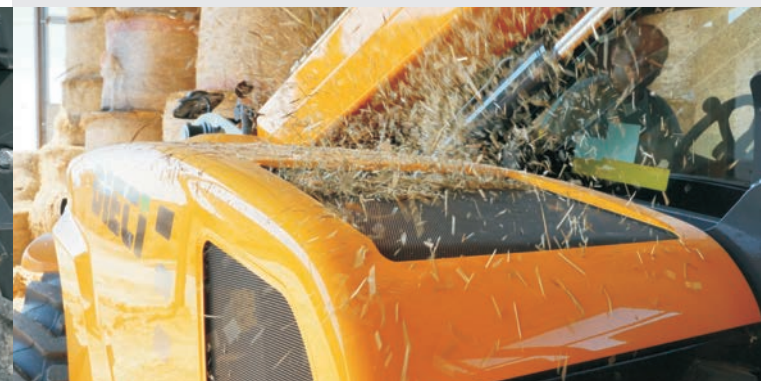
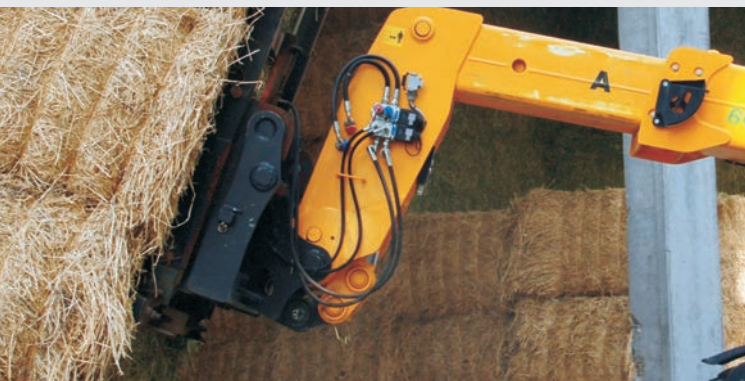
Longer working periods, fewer interruptions and **increased productivity** with the new air filters and **LONG LIFE** oil filter.

CAMERA MAXIMUM CONTROL

The cameras (optional) provide a millimetric view on the screen facilitating the load and movement operations.

REVERSIBLE FANS

Every radiator can be equipped with hydraulic reversible fans which allow significant fuel savings and makes cleaning in dusty and dirty environments much easier and quicker.



SAFETY

ROPS-FOPS

FRAME

TRANSVERSE LEVELING

MOMENT LIMITER

AGRI MAX



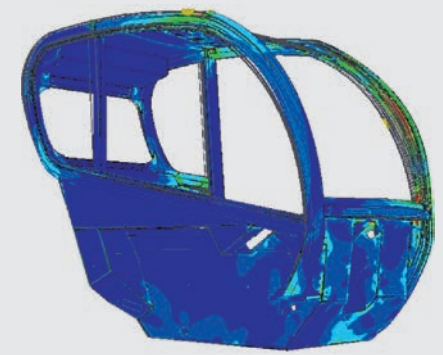


MOMENT LIMITER

Every Dieci machine is equipped with a control device that analyzes vehicle stability in real time and inhibits any aggravating movements when the pre-set safety limits are reached.

The transverse **leveling device** (optional) for inclination angles of up to $\pm 10^\circ$, means you can work in total peace of mind, even on rough ground.

The **Joystick** is equipped with a **capacitive deadman sensor** which, combined with the operator presence sensor in the seat, prevents accidental operation.

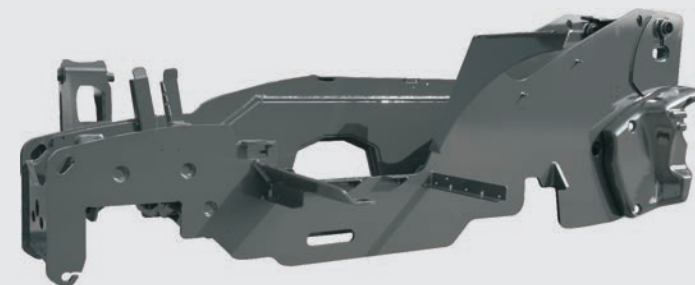


ROPS-FOPS approved cab designed with safety cell to prevent deformation in the event of vehicle overturn or a heavy load falling on the cab.

STURDY FRAME

The frame is one of the defining characteristics of the Agri Max; all welds are performed by automated robots to ensure rigidity and total safety, even under high-stress conditions.

The machine is thus **totally free of vibration and flexure**.



MADE IN ITALY





FOR THE WORLD

DIECI, with more than half a century of experience and continuous development, achieves the **perfect vehicle** for every need.

Our **Technical Assistance Service** maintains a world-wide presence through an extensive network of authorised service centres and dealers.

The automated spare parts warehouses and the direct assistance with the user, provide a very short time of intervention.

DIECI, within just a few hours, can provide both spare parts and qualified staff worldwide.

Warranty

DIECI offers customized warranty extension packs for components and durability.



PERFORMANCE			
Machine model	AGRI MAX 65.8 VS EVO2	AGRI MAX 60.9 VS EVO2	AGRI MAX 75.10
Outriggers maximum capacity	-	-	7500 kg (16535 lb)
Wheels maximum capacity	6500 kg (14330 lb)	6000 kg (13228 lb)	7200 kg (15873 lb)
Maximum lifting height on wheels	7,70 m (25,3 ft)	8,60 m (28,2 ft)	9,50 m (31,2 ft)
Maximum horizontal extension on wheels	4,20 m (13,8 ft)	4,90 m (16,1 ft)	5,40 m (17,7 ft)
Fork swiveling angle	144°	144°	134°
Pull-out force	5700 daN (12814 lbf)	5700 daN (12814 lbf)	5700 daN (12814 lbf)
Towing force	7300 daN (16411 lbf)	7300 daN (16411 lbf)	7300 daN (16411 lbf)
Maximum climb angle	40%	40%	40%
Unladen weight	10900 kg (24030 lb)	11100 kg (24471 lb)	12100 kg (26676 lb)
Max speed (referred to wheels with maximum permitted diameter)	40 km/h (24,9 mph)	40 km/h (24,9 mph)	40 km/h (24,9 mph)

BOOM

Machine model	AGRI MAX 65.8 VS EVO2	AGRI MAX 60.9 VS EVO2	AGRI MAX 75.10
Lifting	10,5 s	11,0 s	15,1 s
Getting off the basket	6,6 s	6,9 s	9,9 s
Extension	5,5 s	6,4 s	10,4 s
Retraction	2,4 s	2,8 s	4,1 s
Forward swiveling	2,8 s	2,8 s	4,6 s
Reverse swiveling	1,9 s	1,9 s	2,0 s

ENGINE

Machine model	AGRI MAX 65.8 VS EVO2	AGRI MAX 60.9 VS EVO2	AGRI MAX 75.10
Brand	FPT	FPT	FPT
Nominal power	103 kW (138 HP)	103 kW (138 HP)	103 kW (138 HP)
@rpm	2200 rpm	2200 rpm	2200 rpm
Peak power	113 kW (152 HP)	113 kW (152 HP)	113 kW (152 HP)
@rpm	1900 rpm	1900 rpm	1900 rpm
Operation	4-stroke	4-stroke	4-stroke
Injection	Electronic, Common Rail	Electronic, Common Rail	Electronic, Common Rail
Number and arrangement of cylinders	4, Vertical in line	4, Vertical in line	4, Vertical in line
Displacement	4485 cm³ (274 in³)	4485 cm³ (274 in³)	4485 cm³ (274 in³)
Consumption	208 g/kWh (342,16 lb/Hp h)	208 g/kWh (342,16 lb/Hp h)	208 g/kWh (342,16 lb/Hp h)
@rpm	1900 rpm	1900 rpm	1900 rpm
Emission standards	Stage IIIB/Tier 4i	Stage IIIB/Tier 4i	Stage IIIB/Tier 4i
Exhaust gas treatment	SCR (AdBlue)	SCR (AdBlue)	SCR (AdBlue)
Cooling system	Liquid	Liquid	Liquid
Intake	16-valve turbo compressor, after-cooler	16-valve turbo compressor, after-cooler	16-valve turbo compressor, after-cooler

DIFFERENTIAL AXLES

Machine model	AGRI MAX 65.8 VS EVO2	AGRI MAX 60.9 VS EVO2	AGRI MAX 75.10
Axles type	2 steering, with 4 epicycloidal reduction gears	2 steering, with 4 epicycloidal reduction gears	2 steering, with 4 epicycloidal reduction gears
Type of steering	4 wheels / transversal / 2 wheels	4 wheels / transversal / 2 wheels	4 wheels / transversal / 2 wheels
Front axle	Rigid (Levelling upon request)	Rigid (Levelling upon request)	Rigid (Levelling upon request)
Rear axle	Swinging	Swinging	Swinging
Service braking	Oil bath with servo brake on front and rear axle with double hydraulic system	Oil bath with servo brake on front and rear axle with double hydraulic system	Oil bath with servo brake on front and rear axle with double hydraulic system
Parking braking	Negative actuation with electrical control	Negative actuation with electrical control	Negative actuation with electrical control

HYDRAULIC SYSTEM

Machine model	AGRI MAX 65.8 VS EVO2	AGRI MAX 60.9 VS EVO2	AGRI MAX 75.10
Hydraulic pump type	Variable displacement with Load Sensing	Variable displacement with Load Sensing	Gear pump for power steering and movements
Hydraulic pump capacity	185 L/min (48,9 gal/min)	185 L/min (48,9 gal/min)	160 L/min (42,3 gal/min)
Max. operating pressure	26,0 MPa (3771 psi)	26,0 MPa (3771 psi)	26,0 MPa (3771 psi)
Distributor control	Proportional 4in1 Joystick	Proportional 4in1 Joystick	Proportional 4in1 Joystick

REFUELING

Machine model	AGRI MAX 65.8 VS EVO2	AGRI MAX 60.9 VS EVO2	AGRI MAX 75.10
Hydraulic system (total)	160,0 L (42,27 gal)	160,0 L (42,27 gal)	160,0 L (42,27 gal)
Diesel tank	125,0 L (33,02 gal)	125,0 L (33,02 gal)	105,0 L (27,74 gal)
AdBlue tank	27,0 L (7,13 gal)	27,0 L (7,13 gal)	35,0 L (9,25 gal)

TRANSMISSION

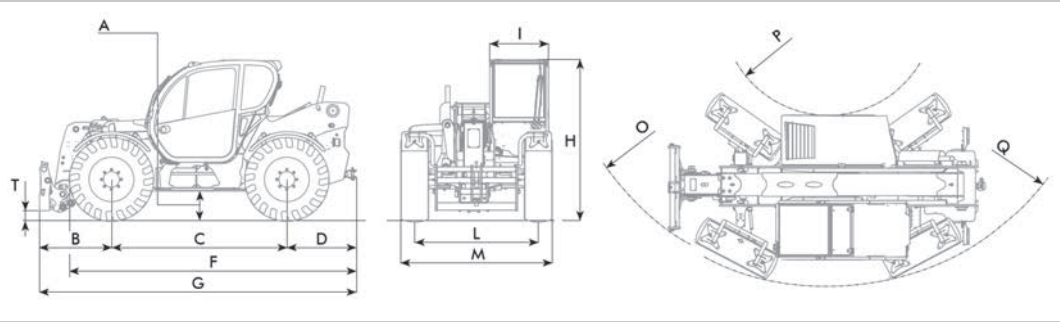
Machine model	AGRI MAX 65.8 VS EVO2	AGRI MAX 60.9 VS EVO2	AGRI MAX 75.10
Transmission type	Hydrostatic single speed Vario System EVO2 with electronic control	Hydrostatic single speed Vario System EVO2 with electronic control	Hydrostatic with variable displacement pump
Hydraulic motor	-	-	Hydrostatic with continuous automatic adjustment
Reversal	Electro-Hydraulic	Electro-Hydraulic	Electro-Hydraulic
Inching	With electronic pedal for controlled forward movement	With electronic pedal for controlled forward movement	With hydraulic pedal for controlled forward movement
Transmission gearbox	-	-	Servo-controlled 2-speed

TIRES

Machine model	AGRI MAX 65.8 VS EVO2	AGRI MAX 60.9 VS EVO2	AGRI MAX 75.10
Standard tires	18x22.5"	18x22.5"	18x22.5"
Optional tires	500/70R24"; 17.5R25"	500/70R24"; 17.5R25"	-

DIMENSIONS

Machine model	AGRI MAX 65.8 VS EVO2	AGRI MAX 60.9 VS EVO2	AGRI MAX 75.10
A	395 mm (15,6 in)	395 mm (15,6 in)	440 mm (17,3 in)
B	1505 mm (59,3 in)	1505 mm (59,3 in)	1480 mm (58,3 in)
C	2800 mm (110,2 in)	2800 mm (110,2 in)	2950 mm (116,1 in)
D	1050 mm (41,3 in)	1050 mm (41,3 in)	1330 mm (52,4 in)
F	4435 mm (174,6 in)	4435 mm (174,6 in)	4820 mm (189,8 in)
G	5005 mm (197 in)	5355 mm (210,8 in)	5910 mm (232,7 in)
H	2495 mm (98,2 in)	2495 mm (98,2 in)	2490 mm (98 in)
I	940 mm (37 in)	940 mm (37 in)	940 mm (37 in)
L	1920 mm (75,6 in)	1920 mm (75,6 in)	1920 mm (75,6 in)
M	2390 mm (94,1 in)	2390 mm (94,1 in)	2380 mm (93,7 in)
O	4350 mm (171,3 in)	4550 mm (179,1 in)	4730 mm (186,2 in)
P	1700 mm (66,9 in)	1700 mm (66,9 in)	1700 mm (66,9 in)
Q	4400 mm (173,2 in)	4400 mm (173,2 in)	4400 mm (173,2 in)
T	145 mm (5,7 in)	145 mm (5,7 in)	100 mm (3,9 in)



The vehicles shown in this catalog can be equipped with standard attachments or equipment, on request or not available, according to the versions. Dieci Srl reserves the right to modify the specifications described and illustrated at any time and without prior notice. Non-contractual document. Non-exhaustive specification list. The photos and diagrams contained in this brochure are provided for consultation and for information purposes.

