



DIECI

AGRI FARMER

28.7 | 30.7 | 28.9 | 30.9



ABSOLUTE QUALITY *EXCELLENCE ON A HUMAN SCALE*

The characteristics of Dieci products can be summarized in three concepts that have always been the hallmark of each vehicle: **technology**, **reliability** and **durability**.

A range of products that aim at excellence, developed around who uses them: man.

We work every day to evolve our machines, adopting the best solutions based on our research, advice and experiences with our customers.

The result is the technological content of the vehicles we produce: the set of components and their set-up guarantee an **optimal performance** level. The result is a style that stands out, because we believe that our identity is our strength.

AGRI FARMER, the most agile among the vehicles of the Dieci agricultural range, has been redesigned on a human scale: with the new futuristic cab signed by Giugiaro Design and important interventions on comfort and performance. We have provided farmers with a **top-quality telehandler**.

EXCLUSIVE COMFORT

ITALIAN DESIGN AND STYLE

Dieci telehandler cabs have always been a combination of **comfort** and **functionality** linked with the **style** which makes us stand out all over the world. In the NEW 2018 CAB we wanted to enhance the Made in Italy with the touch of one of the most famous Italian Designers: **Giugiaro Design**.

The interiors are made of **soft touch materials** obtained from the Automotive sector, extremely soft to the touch, which ensures excellent **thermal and sound insulation**, in addition to **significantly reducing vibrations**. Aesthetics and quality combine with functionality: the passenger compartment is particularly bright thanks to the matching of soft colors and the backlighting of the pedal group, switches and access ladder. Full light and visibility also outwards, with a generous window that allows an **excellent 360° view**, LED work lights on the cab, perimeter and boom, electrically adjustable and heated wing mirrors and three wireless cameras that also inspect the most hidden points.

We want to offer the best comfort to operators, for this we have amplified the traditional comfort of the Dieci cabs with wider spaces for the legs, adjustable steering wheel and armrest, the choice of three different seat suspension systems and a **new cab shock absorption system**, unique in the telehandlers sector, able to effectively dampen the most annoying oscillations of the most uneven ground.

Finally, from research and advanced fluid dynamics studies, we have developed the new **air conditioning system** that, together with the openable roof and rear glass, ensures an optimized air distribution in order to regulate the ideal temperature in every season of the year.



FULL COMFORT

LARGER

- Improved ergonomics and accessibility: more space for the operator's legs

MORE COMFORTABLE

- Cab with hydraulic shock absorbers: shocks fully absorbed
- Adjustable steering column and armrest, heated seat with 3 suspension system options: driving on a comfortable seat

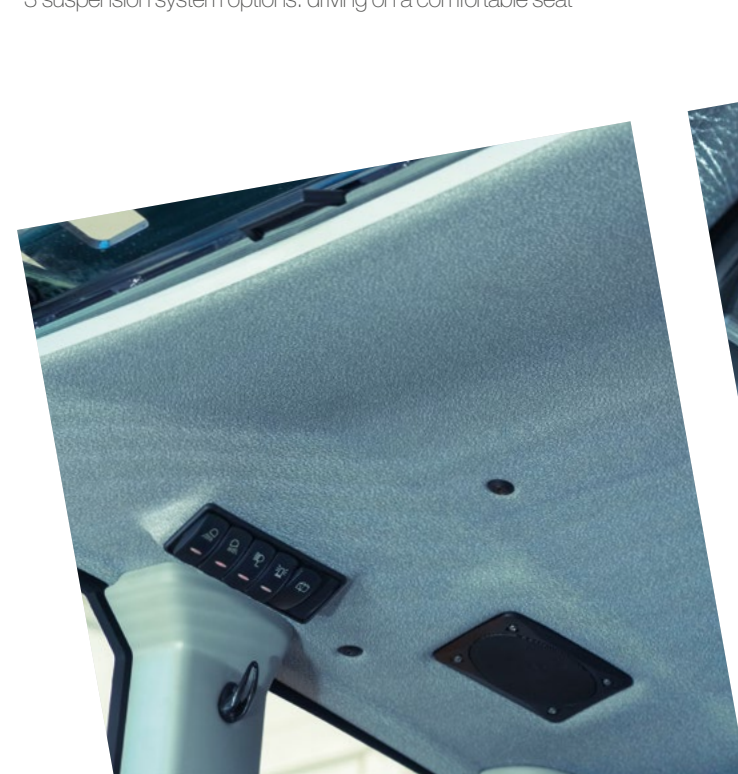
INTERIOR DESIGN

PRECIOUS TOUCH

- Precious soft-touch interiors obtained from the automotive industry

THE NOISE OUTSIDE

- Soundproofed roof, instrument panel and mat insulate the cab from noise



TOTAL VISIBILITY

PANORAMIC VIEW, ALWAYS

- Large windows: optimal visibility in all directions
- Integrated LED work lights: better view, consume less, last longer
- Headlights everywhere: perimeter, on the boom and on the boom head

EVERYTHING UNDER CONTROL

- 3.5" integrated display
- Electrically adjustable and heated wing mirrors
- 3 wireless cameras: rear, right side and boom head in a 7" display



PERFECT CLIMATE

ALWAYS THE RIGHT TEMPERATURE

- Optimized air flows: 6 vents available, openable rear glass and roof, integrated electric lateral window
- Quick demisting of the windows

DOUBLE AIR FILTER

- Operator protected against dust and odors





PURE TECHNOLOGY *POWER AND CONTROL*

Man operates, technology empowers and controls. The new agricultural range is designed on a fully integrated and **advanced electronic vehicle management system**: an exclusive Dieci feature. All the machine control functions (RPM control, speed and diagnostics) refer to a **single control unit** that measures the optimal working parameters through in-depth diagnostics, displaying them in real time, allowing the operator to always have **everything under control**.

The tilting capacity and force have been increased, the boom can be fully operated on the dashboard with a **new joystick**, which also incorporates the fwd/rev selector (FNR reverse shuttle), for easier and more practical direction control.

New strength and stability thanks to the **chassis**, while the electronic control of the new **dual speed hydrostatic transmission** offers a top speed of 40 km/h.

EVOLUTION OF THE FAMILY

 AGRI FARMER 28.7 ↑ Maximum height 6,35 m 2,8 t capacity	 AGRI FARMER 30.7 ↑ Maximum height 6,35 m 3 t capacity
 AGRI FARMER 28.9 ↑ Maximum height 8,65 m 2,8 t capacity	 AGRI FARMER 30.9 ↑ Maximum height 8,65 m 3 t capacity

ADVANCED TELESCOPIC BOOM

ELECTRONIC COMFORT, TECHNOLOGICAL POWER

- Reinforced boom made of High Resistance Steel: more reliable
- Extension cylinder with closing shock absorber: more comfort
- Suspension electronic control according to the speed and height
- Load Sensing - Flow Sharing Distributors: more simultaneous movements for a more efficient work
- Direction of travel and boom controlled by the new CAN-bus joystick



ATTACHMENT HOLDING PLATE

NEW ATTACHMENT HOLDING PLATE

- Counter-lever articulation: greater tilting angle

NEW AUTOMATIC COUPLING SYSTEM

- Tools recognition without manual operations: easier, maximum safety
- Immediate machine setting for different uses

HYDRAULIC ACCESSORIES LOCK

- Double cylinder, double action, maximum stability

DUAL SPEED HYDROSTATIC TRANSMISSION

AGILE AND FAST

- Maximum speed: 40 km/h

ELECTRONIC CONTROL

- Maximum forward travel precision even at full speed

EFFICIENCY GUARANTEED OVER TIME

- More Powerful
- Easier
- More reliable







POWER *FAST, ACCURATE AND ECOLOGICAL*

Power, with 107 hp, but above all **high performance**: this is the spirit of the new engine that drives all the models of the AGRI FARMER family. A cutting-edge engine with a fully electronic control, to optimize **power output and efficiency**.

Its 3769 CC displacement develops an impressive torque at only 1500 rpm. All without renouncing to long lasting reliability and **respect for the environment**, with DOC and SCR systems and the DPF to reduce atmospheric emissions according to Stage 4/Tier 4F regulations.



ENGINE

HIGH PERFORMANCE

- A torque of 379 Nm at only 1500 rpm

ELECTRONIC EVOLUTION

- Complete electronic control: optimized output and efficiency

LONG AUTONOMY

- New top-of-range tank: 100 liters of fuel

CLEAN POWER

MINIMUM EMISSIONS

- Stage 4/Tier 4F system
- DOC+SCR catalysts
- DPF
- 20 liter Urea tank

HYDRAULIC SYSTEM

GEAR PUMP

- Boom readiness and reactivity
- Precise and fast movements, even at high power

THE MAN FIRST

WE SIMPLIFY YOUR WORK

MAINTENANCE

We make the vehicle as the customer wants it!

Dieci, thanks to more than half a century of experience in the telehandler sector, is proud to apply this constructive philosophy: we accept the advice of those who have already contacted us and we think about how to simplify work on a Dieci vehicle.

For the new agricultural range we have completely redesigned the **engine compartment**, with an attractive design that integrates large rear and lateral openings in the hood, so that it can be accessed more easily. Inside, the optimal arrangement of components will make **maintenance quicker and more convenient**.

The radiators are easier and faster to clean, as the new unit makes more accessible. Lubricating operations are easier and faster thanks to the automatic system. Easy life even in the passenger compartment: the air filter can be reached without any tools, while the perfectly sealed electrical system remains protected from water and dust. Also the interventions required for the change of hydraulic oil are minimal, as they are necessary only every 2000 hours of operation.



DIECI SERVICE

Dieci Service is our technical assistance service present across the world, through an **extensive network of dealers** and authorized service centers. Our customers are assisted directly by specialized technicians and every request is satisfied in a very short time: thanks to the use of automated warehouses, Dieci Service can provide, within a few hours, interventions and spare parts all over the world.

Visit www.dieci.com to find the dealer closest to you.

DEALERS 400

COUNTRIES 70

BRANCHES 3

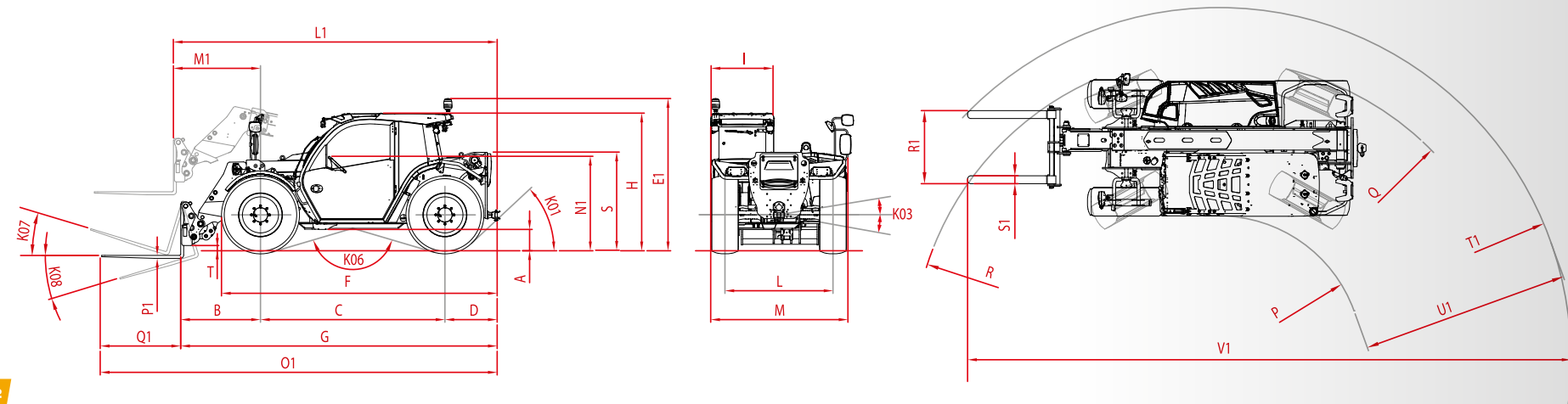
TECHNICAL DATA

PERFORMANCE				
Machine model	AGRI FARMER 28.7	AGRI FARMER 30.7	AGRI FARMER 28.9	AGRI FARMER 30.9
Maximum capacity	2800 kg (6173 lb)	3000 kg (6614 lb)	2800 kg (6173 lb)	3000 kg (6614 lb)
Maximum lifting height on wheels	6,35 m (20,8 ft)	6,35 m (20,8 ft)	8,65 m (28,4 ft)	8,65 m (28,4 ft)
Pull-out force	5800 daN (13039 lbf)	5800 daN (13039 lbf)	5800 daN (13039 lbf)	5800 daN (13039 lbf)
Towing force	5800 daN (13039 lbf)	5800 daN (13039 lbf)	5800 daN (13039 lbf)	5800 daN (13039 lbf)
Maximum climb angle	40%	40%	40%	40%
Unladen weight	6500 kg (14330 lb)	6500 kg (14330 lb)	6680 kg (14727 lb)	6680 kg (14727 lb)
Max speed (referred to wheels with maximum permitted diameter)	40 km/h (24,9 mph)	40 km/h (24,9 mph)	40 km/h (24,9 mph)	40 km/h (24,9 mph)

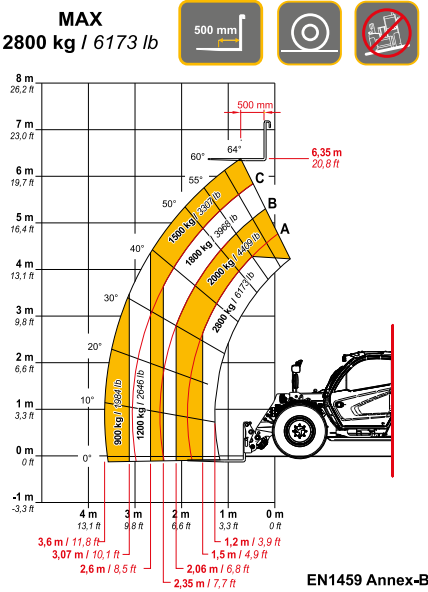
ENGINE	
Brand	Kubota
Nominal power	79,5 kW (107 HP)
@rpm	2200 rpm
Displacement	3769 cm³ (230 in³)
Emission standards	Stage IV/Tier 4f
Exhaust gas treatment	DOC+DPF+SCR
Intake	Turbocharger after-cooler

HYDRAULIC SYSTEM	
Hydraulic pump type	Gear pump for power steering and movements
Hydraulic pump capacity	100 L/min (26,4 gal/min)
Max. operating pressure	24,5 MPa (3553 psi)
Distributor control	Proportional 4in1 Joystick with FNR

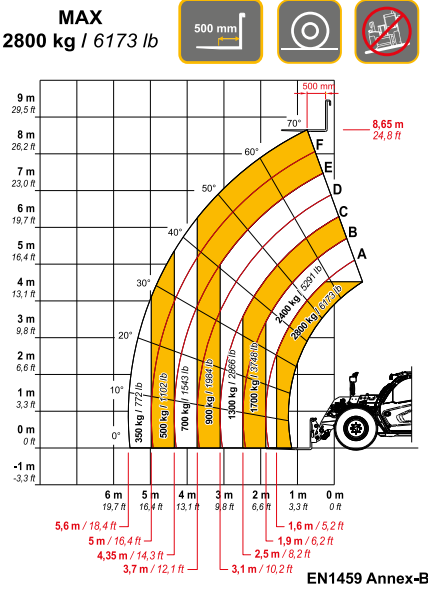
TRANSMISSION	
Transmission type	Hydrostatic with electronic control with variable displacement pump and ECO function
Hydraulic motor	Hydrostatic with continuous automatic adjustment
Reversal	With electronic control operated with vehicle in motion
Inching	With electronic pedal for controlled forward movement
Transmission gearbox	Servo-controlled 2-speed



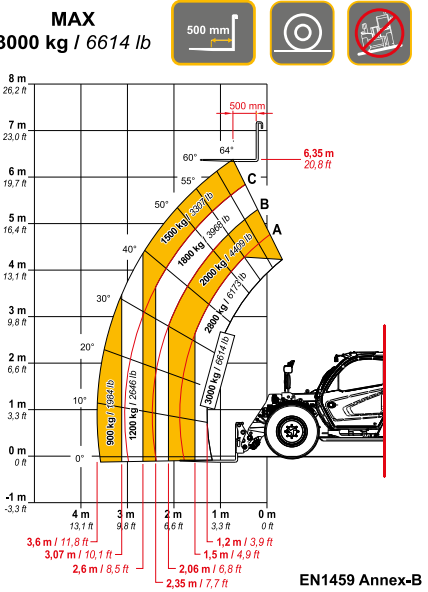
DIMENSIONS				
	AGRI FARMER 28.7	AGRI FARMER 30.7	AGRI FARMER 28.9	AGRI FARMER 30.9
A	300 mm (11,8 in)	300 mm (11,8 in)	300 mm (11,8 in)	300 mm (11,8 in)
B	1211 mm (47,7 in)	1211 mm (47,7 in)	1247 mm (49,1 in)	1247 mm (49,1 in)
C	2800 mm (110,2 in)	2800 mm (110,2 in)	2800 mm (110,2 in)	2800 mm (110,2 in)
D	813 mm (32 in)	813 mm (32 in)	813 mm (32 in)	813 mm (32 in)
E1	2260 mm (89 in)	2435 mm (95,9 in)	2260 mm (89 in)	2435 mm (95,9 in)
F	4155 mm (163,6 in)	4155 mm (163,6 in)	4155 mm (163,6 in)	4155 mm (163,6 in)
G	4765 mm (187,6 in)	4765 mm (187,6 in)	4775 mm (188 in)	4775 mm (188 in)
H	2020 mm (79,5 in)	2020 mm (79,5 in)	2020 mm (79,5 in)	2020 mm (79,5 in)
I	965 mm (38 in)	965 mm (38 in)	965 mm (38 in)	965 mm (38 in)
K01	42°	42°	42°	42°
K03	8°	8°	8°	8°
K06	147°	147°	147°	147°
K07	18°	18°	22°	22°
K08	129°	129°	124°	124°
L	1640 mm (64,6 in)	1640 mm (64,6 in)	1640 mm (64,6 in)	1640 mm (64,6 in)
L1	4935 mm (194,3 in)	4935 mm (194,3 in)	4970 mm (195,7 in)	4970 mm (195,7 in)
M	2045 mm (80,5 in)	2245 mm (88,4 in)	2045 mm (80,5 in)	2245 mm (88,4 in)
M1	1322 mm (52 in)	1322 mm (52 in)	1358 mm (53,5 in)	1358 mm (53,5 in)
N1	1385 mm (54,5 in)	1555 mm (61,2 in)	1385 mm (54,5 in)	1555 mm (61,2 in)
O1	6023 mm (237,1 in)	6023 mm (237,1 in)	6060 mm (238,6 in)	6060 mm (238,6 in)
P	1807 mm (71,1 in)	1807 mm (71,1 in)	1807 mm (71,1 in)	1807 mm (71,1 in)
P1	45 mm (1,8 in)	45 mm (1,8 in)	45 mm (1,8 in)	45 mm (1,8 in)
Q	4168 mm (164,1 in)	4168 mm (164,1 in)	4168 mm (164,1 in)	4168 mm (164,1 in)
Q1	1200 mm (47,2 in)	1200 mm (47,2 in)	1200 mm (47,2 in)	1200 mm (47,2 in)
R	4311 mm (169,7 in)	4311 mm (169,7 in)	4311 mm (169,7 in)	4311 mm (169,7 in)
R1	1110 mm (43,7 in)	1110 mm (43,7 in)	1110 mm (43,7 in)	1110 mm (43,7 in)
S	1495 mm (58,9 in)	1495 mm (58,9 in)	1495 mm (58,9 in)	1495 mm (58,9 in)
S1	120 mm (4,7 in)	120 mm (4,7 in)	120 mm (4,7 in)	120 mm (4,7 in)
T	80 mm (3,1 in)	80 mm (3,1 in)	160 mm (6,3 in)	160 mm (6,3 in)
T1	5090 mm (200,4 in)	5090 mm (200,4 in)	5116 mm (201,4 in)	5116 mm (201,4 in)
U1	3289 mm (129,5 in)	3289 mm (129,5 in)	3316 mm (130,6 in)	3316 mm (130,6 in)
V1	8900 mm (350,4 in)	8900 mm (350,4 in)	8962 mm (352,8 in)	8962 mm (352,8 in)



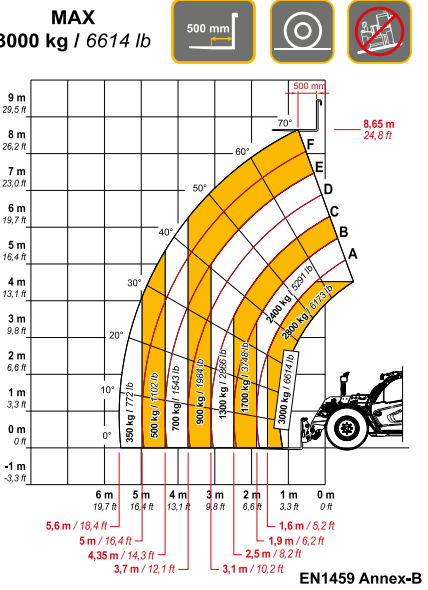
EN1459 Annex-B



EN1459 Annex-B



EN1459 Annex-B



EN1459 Annex-B

DIECI, A STRONG COMPANY

EXPERIENCE FOR INNOVATION

We design and build work vehicles since 1962, and today we are recognized as one of the most important global players.

Proudly Italian, with general headquarters in Emilia Romagna of over 135,000 square meters and about 400 people employed, thanks to 3 European branches in Germany, United Kingdom, France and a global network of over 400 dealers, Dieci is present in over 70 countries.

Research and development of innovative technologies, training and customer care are incessantly at the center of our activities: the result of this constant commitment is realized in an offer that includes 159 models in production, including agricultural, construction, industrial and special vehicles.

In the last 2 years we have renewed 80% of the product range, to offer our customers increasingly advanced, performing, reliable and safe solutions.

Today we introduce the new agricultural range, 4 families and 15 models with major upgrades on comfort and design, to **give value to the most important element: man.**

1962 **FOUNDED**

135.000 **m²**

400 **EMPLOYEES**

159 **MODELS**

19 **FAMILIES**

AGRI FARMER

28.7 | 30.7 | 28.9 | 30.9

DIECI

www.dieci.com

