



**DIECI**

**AGRI FARMER**





# AGRI FARMER

**Agri Farmer:** the compact telehandler packed with all the **technology of a big machine for big performance.**

Precision movements, manoeuvrability, maximum power at the wheels and boom, soundproofing for absolute comfort.

The new more powerful and environmentally-friendly engines with full electronic control, combined with the brand new **P-ECS**, allow a drastic **reduction in fuel consumption** of up to **30%.**

## JUST LIKE A BIG MACHINE





**VS**

**VARIO SYSTEM**

**P-ECS**

**EVOLUTION**

**HI - TECHNOLOGY**

**GREEN CORE**

**COMFORT**

**AGRI FARMER**





# DOUBLE RANGE

9 MODELS

6 - 7 - 9 m  
BOOM HEIGHT

2800 - 3200 Kg  
MAX CAPACITY

HYDROSTATIC  
VS

98 hp







## HYDROSTATIC TRANSMISSION

Built using components of the latest generation and backed up by the generous performance of the propulsion units, the hydrostatic transmission allows fluid and precise manoeuvres.

## VARIO SYSTEM

*INFINITE RANGE OF OPERATING MODES.*

The Vario System transmission ensures that the right speed-to-power ratio is always available, whatever the operating conditions. The continuously variable speed from 0 to 35 km/h and the **inching pedal** ensure maximum power is available at all operating speeds.

The new **P-ECS** (Power-Efficiency Control System) is a new concept in engine management, which provides **fuel savings of up to 30 %**.





# EVOLUTION

**P-ECS**

**-30%  
FUEL CONSUMPTION**

**TRAILER TOWING**

**VS**







## Peerless handling

The use of the VS hydrostatic transmission allows easy precise manoeuvring; it is designed to deliver power to the wheels continuously without the need to change gear (from 0 to 35 km/h), while maintaining a high level of tractive power.

The innovative electronic engine/transmission management system ensures that you can always count on having always have the right amount of power available, whatever the type of terrain or load conditions.

## Maximum performance

The perfect balance between the two highly-reliable speed and temperature control systems makes for exceptional performance when **towing** and working under high load.

**P-ECS** Power-Efficiency Control System

The operator can focus fully on the task in hand, as the optimum engine speed is calculated by the electronic control unit on the basis of the demand for power.

This ingenious system obtains a **reduction in fuel consumption of between 15 and 30%**.

## Stage 3B/Tier 4i ENGINES with DPF

The attractively-styled bodywork conceals the new **KUBOTA Turbo** Aftercooled Common Rail Diesel engine with full electronic control that complies with the very stringent Stage 3B/Tier 4i emission standards.

The engine is equipped with a Diesel Particulate Filter (DPF) to reduce harmful exhaust emissions.

Intuitive filter regeneration management, with both manual and automatic functions.







COMFORT

ROPS-FOPS

360°  
VISIBILITY

ON-BOARD  
COMPUTER

A/C







## Absolute comfort

It's the first thing you notice on board an Agri Farmer. The intelligently designed control layout makes the machine simple, intuitive and comfortable to use.

Unparalleled technology with the new **on-board computer**.

The display shows clearly and in real time all the information necessary to operate the vehicle.

The **semi-automatic air conditioning system** with 7 outlet vents allows perfect air circulation inside the cabin. The openable roof hatch and rear window, standard on all models, allowing improved ventilation while working.



With the **widest cab door** on the market, accessing the driving position is easy and safe.

Inside the cab everything has been designed in order to make work easier for the operator.

Soundproofing, **adjustable steering wheel** in both height and reach, **electric windows**, storage compartments and a range of accessories including **air conditioning**, radio, sunblind and ergonomic seat with pneumatic suspension ensure total operator comfort.

The windscreen wiper also cleans the glass at the top of the cab.

A wide mesh safety grille and one of the highest driving positions in its class provide an unrivalled visibility of **360°**.





# HANDLING

AGILITY

INCHING PEDAL

NEW  
JOYSTICK







## All the controls in one hand

*with absolute precision.*

The 4-in-one joystick, standard equipment on all models, provides integrated control of the vehicle. The integral travel direction control allows rapid shuttling between forward and reverse.

The compensated flow sharing control valve allows simultaneous operation of all movements.

## Easy Dumping

The ingenious **slewing** system is specially designed to increase the operating arc, which is particularly useful when dumping with the boom raised.



## Agility

The high-efficiency steering system ensures that even under high load conditions **the steering** always feels **light and responsive**.

**Manoeuvrability** remains the chief characteristic of this compact telehandler, which boasts the **tightest turning circle in its class**.

## Inching Pedal

An essential control when movements must be slowed right down or stopped, and maximum hydraulic power is required for the equipment in use.

The **servo-assisted service brake** furthermore ensures safe and modulated braking reducing stress on the pedal.

## Easy Ride

Developed by Dieci design engineers, the sophisticated air suspension system installed on the boom (optional) drastically reduces oscillation when travelling over rough terrain.





**- 20%  
FUEL  
CONSUMPTION**

**DISPLAY TFT  
USER INTERFACE**

**GREEN CORE**

**DPF**

**STAGE 3B / Tier 4i  
NEW ENGINES**







## On-board computer

Advanced instrumentation with a large **display** and intuitive icon-based interface provides comprehensive and detailed information.

Machine functions are managed via the **CANBUS system**, which provides an improved response in rapid time.

Constant monitoring of operating conditions and in-depth diagnostics using real-time data.

Electronic engine management ensures a dramatic **reduction in CO, CO<sub>2</sub> and NO<sub>x</sub> emissions**.

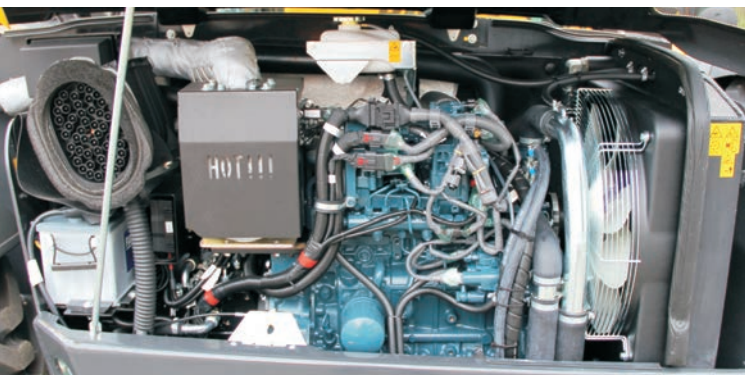


## Dieci for the environment

*A leap forward into a cleaner, more sustainable future.*

Dieci has chosen **ECOLOGICAL ENGINES** with full electronic control of fuel injection, turbo pressure, torque, engine rpm, engine brake, starter safety release, monitoring, diagnostics and **DPF system with automatic regeneration** for the treatment of exhaust emissions.

**Enhanced performance, lower fuel consumption**, reduced engine oil contamination and longer intervals between services.





# TECHNOLOGY

QUICK DEP

FRAME

115 1/1'

ROPS-FOPS

MOMENT  
LIMITER

COMPENSATION CYLINDER







## HYDRAULIC SYSTEM

The high-capacity hydraulic pump provides a flow rate of **115 l/1'** and thus helps speed up manoeuvres, **reducing operating times by up to 25%** compared with the previous model.

The **compensation cylinder (PATENTED BY DIECI)**, located inside the lifting ram, ensures that the load on the boom is balanced at all times, thereby improving durability.

## QUICK DEP

System for depressurising the hydraulic service couplers: makes the connection of implements easy and effortless.

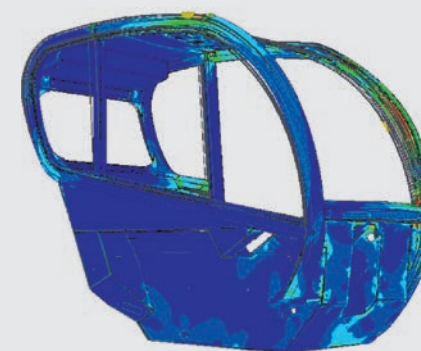
## CHAIN SYSTEM

Amazing performance with the chain extension system, for increased strength and enhanced visibility.

## MOMENT LIMITER

Every Dieci machine is equipped with a control device that analyzes vehicle stability in real time and inhibits any aggravating movements when the pre-set safety limits are reached.

The **Joystick** is equipped with a **capacitive deadman sensor** which, combined with the operator presence sensor in the seat, prevents accidental operation.

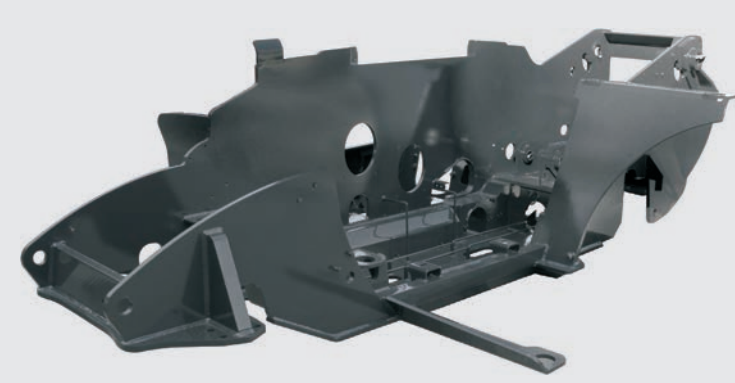


**ROPS-FOPS** approved cab designed with safety cell to prevent deformation in the event of vehicle overturn or a heavy load falling on the cab.

## STURDY FRAME

The frame is one of the defining characteristics of the Dieci Agri Farmer; all welds are performed by automated robots to ensure rigidity and total safety, even under high-stress conditions.

The machine is thus totally **free of vibration and flexure**.





# MADE IN ITALY







# FOR THE WORLD

**DIECI**, with more than half a century of experience and continuous development, achieves the **perfect vehicle** for every need.

Our **Technical Assistance Service** maintains a world-wide presence through an **extensive network** of authorised service centres and dealers.

The automated spare parts warehouses and the direct assistance with the user, provide a very short time of intervention.

**DIECI**, within a few hours, can provide worldwide both spare parts and qualified staff.

## **Warranty**

**DIECI** offers customized warranty extension packs for components and durability.





Performance									
Machine model	AGRI FARMER 32.6	AGRI FARMER 28.7	AGRI FARMER 30.7	AGRI FARMER 28.9	AGRI FARMER 30.9	AGRI FARMER 28.7 VS	AGRI FARMER 30.7 VS	AGRI FARMER 28.9 VS	AGRI FARMER 30.9 VS
Maximum capacity	3200 kg (7055 lb)	2800 kg (6173 lb)	3000 kg (6614 lb)	2800 kg (6173 lb)	3000 kg (6614 lb)	2800 kg (6173 lb)	3000 kg (6614 lb)	2800 kg (6173 lb)	3000 kg (6614 lb)
Maximum lifting height on wheels	6,00 m (19,7 ft)	6,35 m (20,8 ft)	6,35 m (20,8 ft)	8,70 m (28,5 ft)	8,70 m (28,5 ft)	6,35 m (20,8 ft)	6,35 m (20,8 ft)	8,70 m (28,5 ft)	8,70 m (28,5 ft)
Maximum horizontal extension on wheels	3,30 m (10,8 ft)	3,65 m (12 ft)	3,65 m (12 ft)	5,70 m (18,7 ft)	5,70 m (18,7 ft)	3,65 m (12 ft)	3,65 m (12 ft)	5,70 m (18,7 ft)	5,70 m (18,7 ft)
Fork swiveling angle	146°	146°	146°	146°	146°	146°	146°	146°	146°
Pull-out force	5700 daN (12814 lbf)	5700 daN (12814 lbf)	5700 daN (12814 lbf)	5700 daN (12814 lbf)	5700 daN (12814 lbf)	5700 daN (12814 lbf)	5700 daN (12814 lbf)	5700 daN (12814 lbf)	5700 daN (12814 lbf)
Towing force	5500 daN (12364 lbf)	5500 daN (12364 lbf)	5500 daN (12364 lbf)	5500 daN (12364 lbf)	5500 daN (12364 lbf)	5500 daN (12364 lbf)	5500 daN (12364 lbf)	5500 daN (12364 lbf)	5500 daN (12364 lbf)
Maximum climb angle	40%	40%	40%	40%	40%	40%	40%	40%	40%
Unladen weight	5900 kg (13007 lb)	6100 kg (13448 lb)	6100 kg (13448 lb)	6250 kg (13779 lb)	6250 kg (13779 lb)	6100 kg (13448 lb)	6100 kg (13448 lb)	6250 kg (13779 lb)	6250 kg (13779 lb)
Max speed (referred to wheels with maximum permitted diameter)	35 km/h (21,7 mph)	35 km/h (21,7 mph)	35 km/h (21,7 mph)	35 km/h (21,7 mph)	35 km/h (21,7 mph)	35 km/h (21,7 mph)	35 km/h (21,7 mph)	35 km/h (21,7 mph)	35 km/h (21,7 mph)

## BOOM

Machine model	AGRI FARMER 32.6	AGRI FARMER 28.7	AGRI FARMER 30.7	AGRI FARMER 28.9	AGRI FARMER 30.9	AGRI FARMER 28.7 VS	AGRI FARMER 30.7 VS	AGRI FARMER 28.9 VS	AGRI FARMER 30.9 VS
Lifting	5,9 s	7,4 s	7,4 s	9,0 s	9,0 s	7,4 s	7,4 s	9,0 s	9,0 s
Getting off the basket	3,1 s	3,9 s	3,9 s	4,7 s	4,7 s	3,9 s	3,9 s	4,7 s	4,7 s
Extension	4,9 s	5,7 s	5,7 s	5,2 s	5,2 s	5,7 s	5,7 s	5,2 s	5,2 s
Retraction	2,7 s	3,2 s	3,2 s	2,9 s	2,9 s	3,2 s	3,2 s	2,9 s	2,9 s
Forward swiveling	2,5 s	3,2 s	3,2 s	3,2 s	3,2 s	3,2 s	3,2 s	3,2 s	3,2 s
Reverse swiveling	1,6 s	2,1 s	2,1 s	1,7 s	1,7 s	2,1 s	2,1 s	1,7 s	1,7 s

## ENGINE

Machine model	AGRI FARMER 32.6	AGRI FARMER 28.7	AGRI FARMER 30.7	AGRI FARMER 28.9	AGRI FARMER 30.9	AGRI FARMER 28.7 VS	AGRI FARMER 30.7 VS	AGRI FARMER 28.9 VS	AGRI FARMER 30.9 VS
Brand	Kubota	Kubota	Kubota	Kubota	Kubota	Kubota	Kubota	Kubota	Kubota
Nominal power	73,4 kW (98 HP)	73,4 kW (98 HP)	73,4 kW (98 HP)	73,4 kW (98 HP)	73,4 kW (98 HP)	73,4 kW (98 HP)	73,4 kW (98 HP)	73,4 kW (98 HP)	73,4 kW (98 HP)
@rpm	2600 rpm	2600 rpm	2600 rpm	2600 rpm	2600 rpm	2600 rpm	2600 rpm	2600 rpm	2600 rpm
Operation	4-stroke	4-stroke	4-stroke	4-stroke	4-stroke	4-stroke	4-stroke	4-stroke	4-stroke
Injection	Electronic, Common Rail	Electronic, Common Rail	Electronic, Common Rail	Electronic, Common Rail	Electronic, Common Rail	Electronic, Common Rail	Electronic, Common Rail	Electronic, Common Rail	Electronic, Common Rail
Number and arrangement of cylinders	4, Vertical in line	4, Vertical in line	4, Vertical in line	4, Vertical in line	4, Vertical in line	4, Vertical in line	4, Vertical in line	4, Vertical in line	4, Vertical in line
Displacement	3769 cm³ (230 in³)	3769 cm³ (230 in³)	3769 cm³ (230 in³)	3769 cm³ (230 in³)	3769 cm³ (230 in³)	3769 cm³ (230 in³)	3769 cm³ (230 in³)	3769 cm³ (230 in³)	3769 cm³ (230 in³)
Consumption	231 g/kWh (380 lb/Hp h)	231 g/kWh (380 lb/Hp h)	231 g/kWh (380 lb/Hp h)	231 g/kWh (380 lb/Hp h)	231 g/kWh (380 lb/Hp h)	231 g/kWh (380 lb/Hp h)	231 g/kWh (380 lb/Hp h)	231 g/kWh (380 lb/Hp h)	231 g/kWh (380 lb/Hp h)
@rpm	2600 rpm	2600 rpm	2600 rpm	2600 rpm	2600 rpm	2600 rpm	2600 rpm	2600 rpm	2600 rpm
Emission standards	Stage IIIB/ Tier 4i	Stage IIIB/ Tier 4i	Stage IIIB/ Tier 4i	Stage IIIB/ Tier 4i	Stage IIIB/ Tier 4i	Stage IIIB/ Tier 4i	Stage IIIB/ Tier 4i	Stage IIIB/ Tier 4i	Stage IIIB/ Tier 4i
Exhaust gas treatment	Particulate filter (DPF)	Particulate filter (DPF)	Particulate filter (DPF)	Particulate filter (DPF)	Particulate filter (DPF)	Particulate filter (DPF)	Particulate filter (DPF)	Particulate filter (DPF)	Particulate filter (DPF)
Cooling system	Liquid	Liquid	Liquid	Liquid	Liquid	Liquid	Liquid	Liquid	Liquid
Intake	Turbo compressor	Turbo compressor	Turbo compressor	Turbo compressor	Turbo compressor	Turbo compressor	Turbo compressor	Turbo compressor	Turbo compressor

## DIFFERENTIAL AXLES

Machine model	AGRI FARMER 32.6	AGRI FARMER 28.7	AGRI FARMER 30.7	AGRI FARMER 28.9	AGRI FARMER 30.9	AGRI FARMER 28.7 VS	AGRI FARMER 30.7 VS	AGRI FARMER 28.9 VS	AGRI FARMER 30.9 VS
Axles type	2 steering, with 4 planetary reduction gears	2 steering, with 4 planetary reduction gears	2 steering, with 4 planetary reduction gears	2 steering, with 4 planetary reduction gears	2 steering, with 4 planetary reduction gears	2 steering, with 4 planetary reduction gears	2 steering, with 4 planetary reduction gears	2 steering, with 4 planetary reduction gears	2 steering, with 4 planetary reduction gears
Type of steering	4 wheels / trans-versal / 2 wheels	4 wheels / trans-versal / 2 wheels	4 wheels / trans-versal / 2 wheels	4 wheels / trans-versal / 2 wheels	4 wheels / trans-versal / 2 wheels	4 wheels / trans-versal / 2 wheels	4 wheels / trans-versal / 2 wheels	4 wheels / trans-versal / 2 wheels	4 wheels / trans-versal / 2 wheels
Front axle	Rigid	Rigid	Rigid	Rigid	Rigid	Rigid	Rigid	Rigid	Rigid
Rear axle	Swinging	Swinging	Swinging	Swinging	Swinging	Swinging	Swinging	Swinging	Swinging
Parking braking	Negative actuation with electrical control	Negative actuation with electrical control	Negative actuation with electrical control	Negative actuation with electrical control	Negative actuation with electrical control	Negative actuation with electrical control	Negative actuation with electrical control	Negative actuation with electrical control	Negative actuation with electrical control

## HYDRAULIC SYSTEM

Machine model	AGRI FARMER 32.6	AGRI FARMER 28.7	AGRI FARMER 30.7	AGRI FARMER 28.9	AGRI FARMER 30.9	AGRI FARMER 28.7 VS	AGRI FARMER 30.7 VS	AGRI FARMER 28.9 VS	AGRI FARMER 30.9 VS
Hydraulic pump type	Gear pump for power steering and move-ments	Gear pump for power steering and move-ments	Gear pump for power steering and move-ments	Gear pump for power steering and move-ments	Gear pump for power steering and move-ments	Gear pump for power steering and move-ments	Gear pump for power steering and move-ments	Gear pump for power steering and move-ments	Gear pump for power steering and move-ments
Hydraulic pump capacity	115 L/min (30,4 gal/ min)	115 L/min (30,4 gal/ min)	115 L/min (30,4 gal/ min)	115 L/min (30,4 gal/ min)	115 L/min (30,4 gal/ min)	115 L/min (30,4 gal/ min)	115 L/min (30,4 gal/ min)	115 L/min (30,4 gal/ min)	115 L/min (30,4 gal/ min)
Max. operating pressure	24,5 MPa (3553 psi)	24,5 MPa (3553 psi)	24,5 MPa (3553 psi)	24,5 MPa (3553 psi)	24,5 MPa (3553 psi)	24,5 MPa (3553 psi)	24,5 MPa (3553 psi)	24,5 MPa (3553 psi)	24,5 MPa (3553 psi)
Distributor control	4in1 proportional Joystick	4in1 proportional Joystick	4in1 proportional Joystick	4in1 proportional Joystick	4in1 proportional Joystick	4in1 proportional Joystick	4in1 proportional Joystick	4in1 proportional Joystick	4in1 proportional Joystick

## REFUELING

Machine model	AGRI FARMER 32.6	AGRI FARMER 28.7	AGRI FARMER 30.7	AGRI FARMER 28.9	AGRI FARMER 30.9	AGRI FARMER 28.7 VS	AGRI FARMER 30.7 VS	AGRI FARMER 28.9 VS	AGRI FARMER 30.9 VS
Hydraulic system (total)	130,0 L (34,34 gal)	140,0 L (36,98 gal)	140,0 L (36,98 gal)	140,0 L (36,98 gal)	140,0 L (36,98 gal)	140,0 L (36,98 gal)	140,0 L (36,98 gal)	140,0 L (36,98 gal)	140,0 L (36,98 gal)
Diesel tank	100,0 L (26,42 gal)	100,0 L (26,42 gal)	100,0 L (26,42 gal)	100,0 L (26,42 gal)	100,0 L (26,42 gal)	100,0 L (26,42 gal)	100,0 L (26,42 gal)	100,0 L (26,42 gal)	100,0 L (26,42 gal)

## TIRES

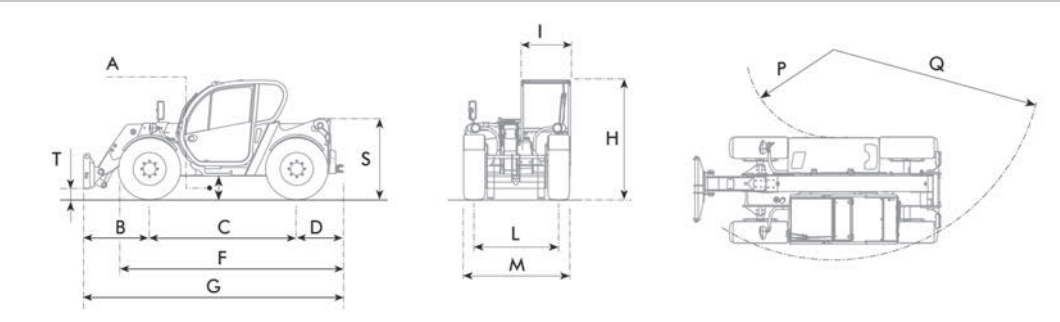
Machine model	AGRI FARMER 32.6	AGRI FARMER 28.7	AGRI FARMER 30.7	AGRI FARMER 28.9	AGRI FARMER 30.9	AGRI FARMER 28.7 VS	AGRI FARMER 30.7 VS	AGRI FARMER 28.9 VS	AGRI FARMER 30.9 VS
Standard tires	12.5x18"	12.5x18"	400/70x20"	12.5x18"	400/70x20"	12.5x18"	400/70x20"	12.5x18"	400/70x20"
Optional tires	400/70x20"; 400/70x24"	400/70x20"; 400/70x24"	400/70x24"	400/70x20"; 400/70x24"	400/70x24"	400/70x20"	400/70x24"	400/70x20"	400/70x24"

						400/70x20"		400/70x20"	
						;		;	
						400/70x24"		400/70x24"	

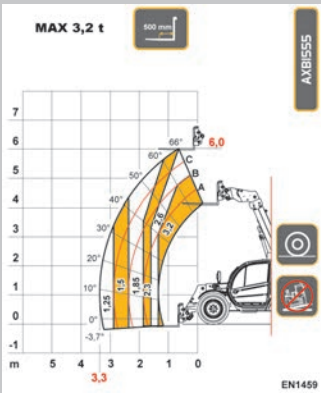


## DIMENSIONS

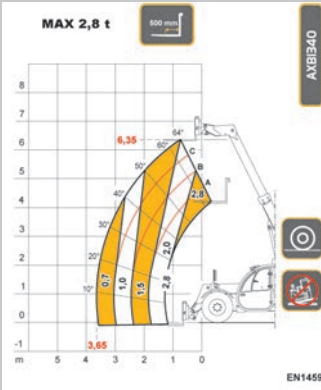
Machine model	AGRI FARMER 32.6	AGRI FARMER 28.7	AGRI FARMER 30.7	AGRI FARMER 28.9	AGRI FARMER 30.9	AGRI FARMER 28.7 VS	AGRI FARMER 30.7 VS	AGRI FARMER 28.9 VS	AGRI FARMER 30.9 VS
A	400 mm (15,7 in)	400 mm (15,7 in)	400 mm (15,7 in)	400 mm (15,7 in)	400 mm (15,7 in)	400 mm (15,7 in)	400 mm (15,7 in)	400 mm (15,7 in)	400 mm (15,7 in)
B	1195 mm (47 in)	1315 mm (51,8 in)	1315 mm (51,8 in)	1232 mm (48,5 in)	1232 mm (48,5 in)	1315 mm (51,8 in)	1315 mm (51,8 in)	1232 mm (48,5 in)	1232 mm (48,5 in)
C	2600 mm (102,4 in)	2800 mm (110,2 in)	2800 mm (110,2 in)	2800 mm (110,2 in)	2800 mm (110,2 in)	2800 mm (110,2 in)	2800 mm (110,2 in)	2800 mm (110,2 in)	2800 mm (110,2 in)
D	700 mm (27,6 in)	650 mm (25,6 in)	650 mm (25,6 in)	743 mm (29,3 in)	743 mm (29,3 in)	650 mm (25,6 in)	650 mm (25,6 in)	743 mm (29,3 in)	743 mm (29,3 in)
F	3840 mm (151,2 in)	3990 mm (157,1 in)	3990 mm (157,1 in)	4087 mm (160,9 in)	4087 mm (160,9 in)	3990 mm (157,1 in)	3990 mm (157,1 in)	4087 mm (160,9 in)	4087 mm (160,9 in)
G	4495 mm (177 in)	4765 mm (187,6 in)	4765 mm (187,6 in)	4775 mm (188 in)	4775 mm (188 in)	4765 mm (187,6 in)	4765 mm (187,6 in)	4775 mm (188 in)	4775 mm (188 in)
H	2240 mm (88,2 in)	2040 mm (80,3 in)	2220 mm (87,4 in)	2040 mm (80,3 in)	2220 mm (87,4 in)	2040 mm (80,3 in)	2220 mm (87,4 in)	2040 mm (80,3 in)	2220 mm (87,4 in)
I	940 mm (37 in)	940 mm (37 in)	940 mm (37 in)	940 mm (37 in)	940 mm (37 in)	940 mm (37 in)	940 mm (37 in)	940 mm (37 in)	940 mm (37 in)
L	1600 mm (63 in)	1600 mm (63 in)	1600 mm (63 in)	1600 mm (63 in)	1600 mm (63 in)	1600 mm (63 in)	1600 mm (63 in)	1600 mm (63 in)	1600 mm (63 in)
M	2000 mm (78,7 in)	2000 mm (78,7 in)	2000 mm (78,7 in)	2000 mm (78,7 in)	2000 mm (78,7 in)	2000 mm (78,7 in)	2000 mm (78,7 in)	2000 mm (78,7 in)	2000 mm (78,7 in)
P	1530 mm (60,2 in)	1670 mm (65,7 in)	1670 mm (65,7 in)	1670 mm (65,7 in)	1670 mm (65,7 in)	1670 mm (65,7 in)	1670 mm (65,7 in)	1670 mm (65,7 in)	1670 mm (65,7 in)
Q	3910 mm (153,9 in)	4000 mm (157,5 in)	4000 mm (157,5 in)	4000 mm (157,5 in)	4000 mm (157,5 in)	4000 mm (157,5 in)	4000 mm (157,5 in)	4000 mm (157,5 in)	4000 mm (157,5 in)
S	-	1544 mm (60,8 in)	1544 mm (60,8 in)	1540 mm (60,6 in)	1540 mm (60,6 in)	1544 mm (60,8 in)	1544 mm (60,8 in)	1540 mm (60,6 in)	1540 mm (60,6 in)
T	20 mm (0,8 in)	20 mm (0,8 in)	20 mm (0,8 in)	93 mm (3,7 in)	93 mm (3,7 in)	20 mm (0,8 in)	20 mm (0,8 in)	93 mm (3,7 in)	93 mm (3,7 in)



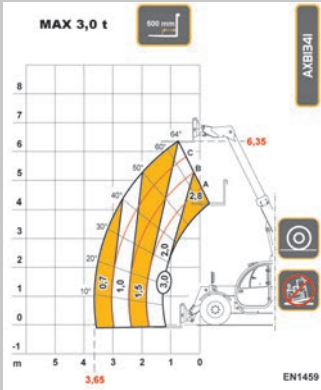
The vehicles shown in this catalog can be equipped with standard attachments or equipment, on request or not available, according to the versions. Dieci Srl reserves the right to modify the specifications described and illustrated at any time and without prior notice. Non-contractual document. Non-exhaustive specification list. The photos and diagrams contained in this brochure are provided for consultation and for information purposes.



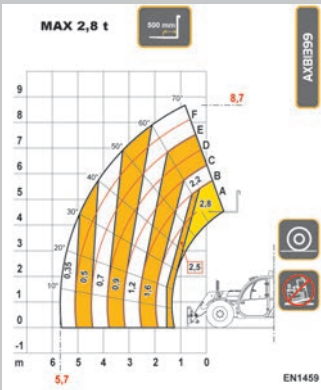
32.6



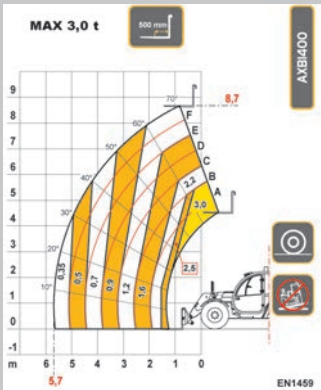
28.7



30.7



28.9



30.9



